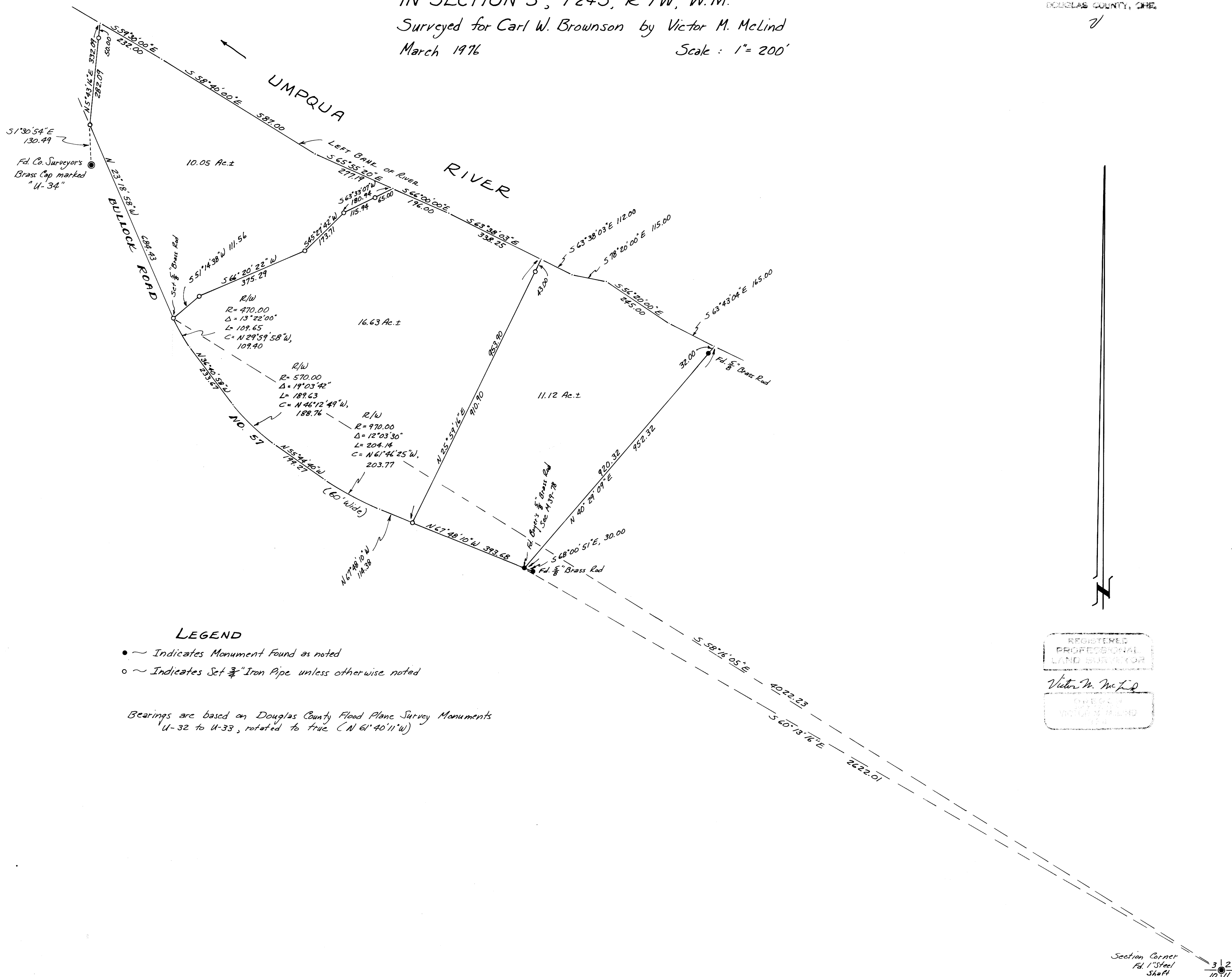


FILED 27
RECEIVED 27
MAR 16 1976
COUNTY SURVEYOR
DOUGLAS COUNTY, ORE.
7

SURVEY FOR DEED DESCRIPTION
IN SECTION 3, T24S, R7W, W.M.

Surveyed for Carl W. Brownson by Victor M. McLind
March 1976
Scale: 1" = 200'



MAP FILE M 59 - 49

MAP FILE M 59 - 49