

# SURVEY FOR DESCRIPTION IN SECTION 15, T.23S. R.4W.W.M.

FOR: LILLIAN KUK  
BY: BAUGHMAN SURVEYING SERVICE

FEBRUARY 1976 SCALE: 1"=100'

FILED K<sup>c</sup>  
RECEIVED

MAR 10 1976

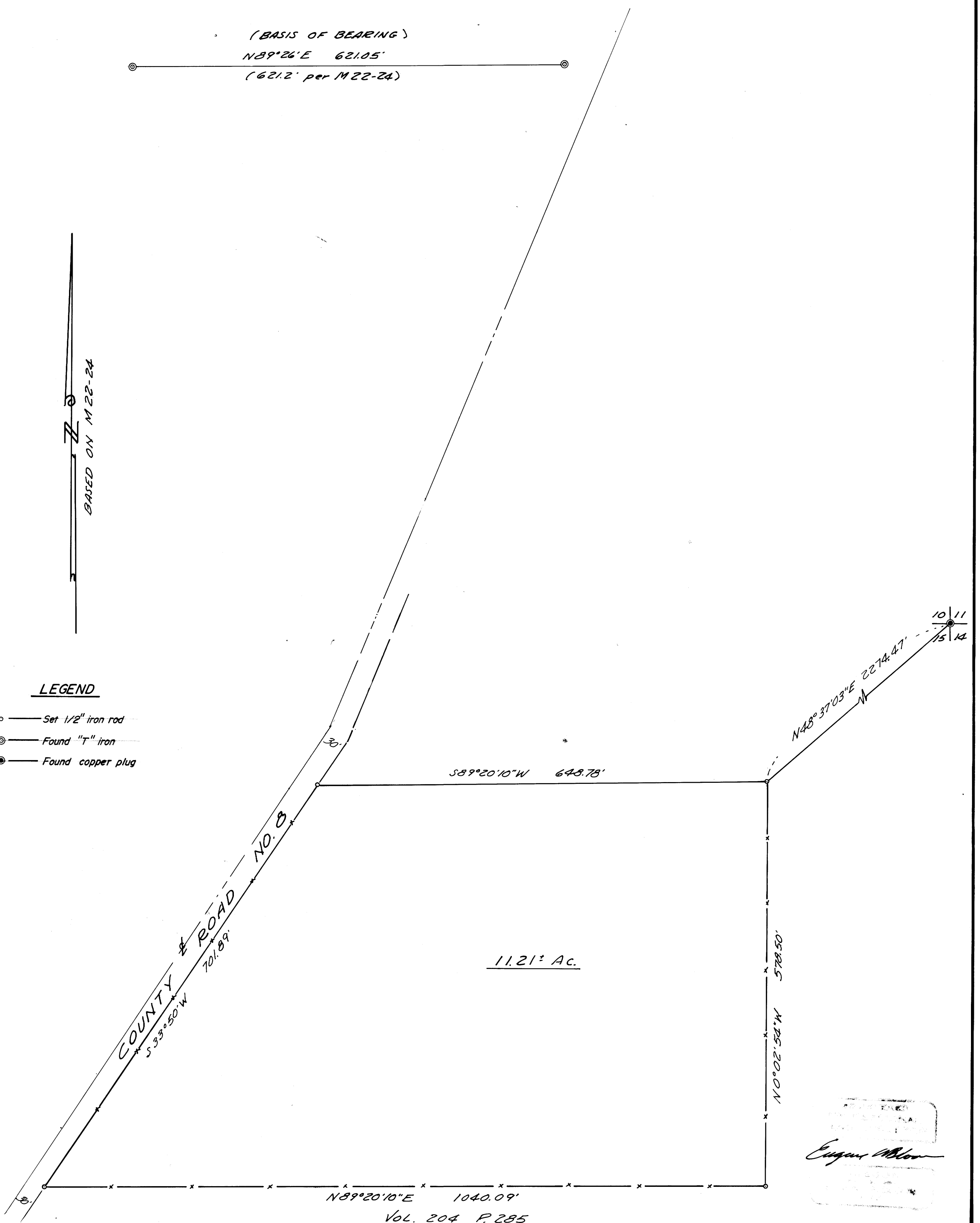
COUNTY SURVEYOR  
DOUGLAS COUNTY, ORE.

(BASIS OF BEARING)  
N89°26'E 621.05'  
(621.2' per M22-24)

BASED ON M22-24

### LEGEND

- — Set 1/2" iron rod
- ⊙ — Found "T" iron
- — Found copper plug



11.21± Ac.

N89°20'10"E 1040.09'  
Vol. 204, P. 285

Eugene M. Blou  
COUNTY SURVEYOR  
DOUGLAS COUNTY, ORE.

36251