

COUNTY SURVEYORS FILE DATA
DO NOT REMOVE FROM OFFICE

FILED *RLS*
RECEIVED

FEB 20 1976

COUNTY SURVEYOR
DOUGLAS COUNTY, ORE.

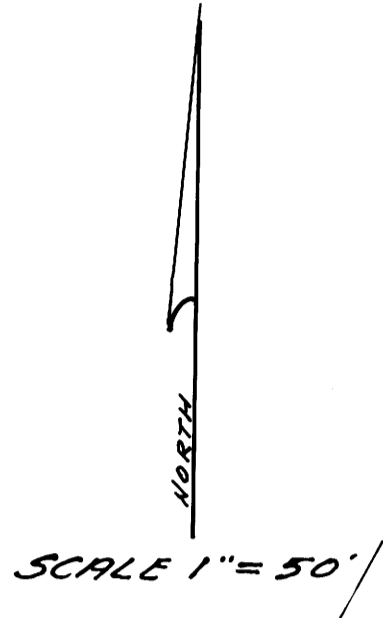
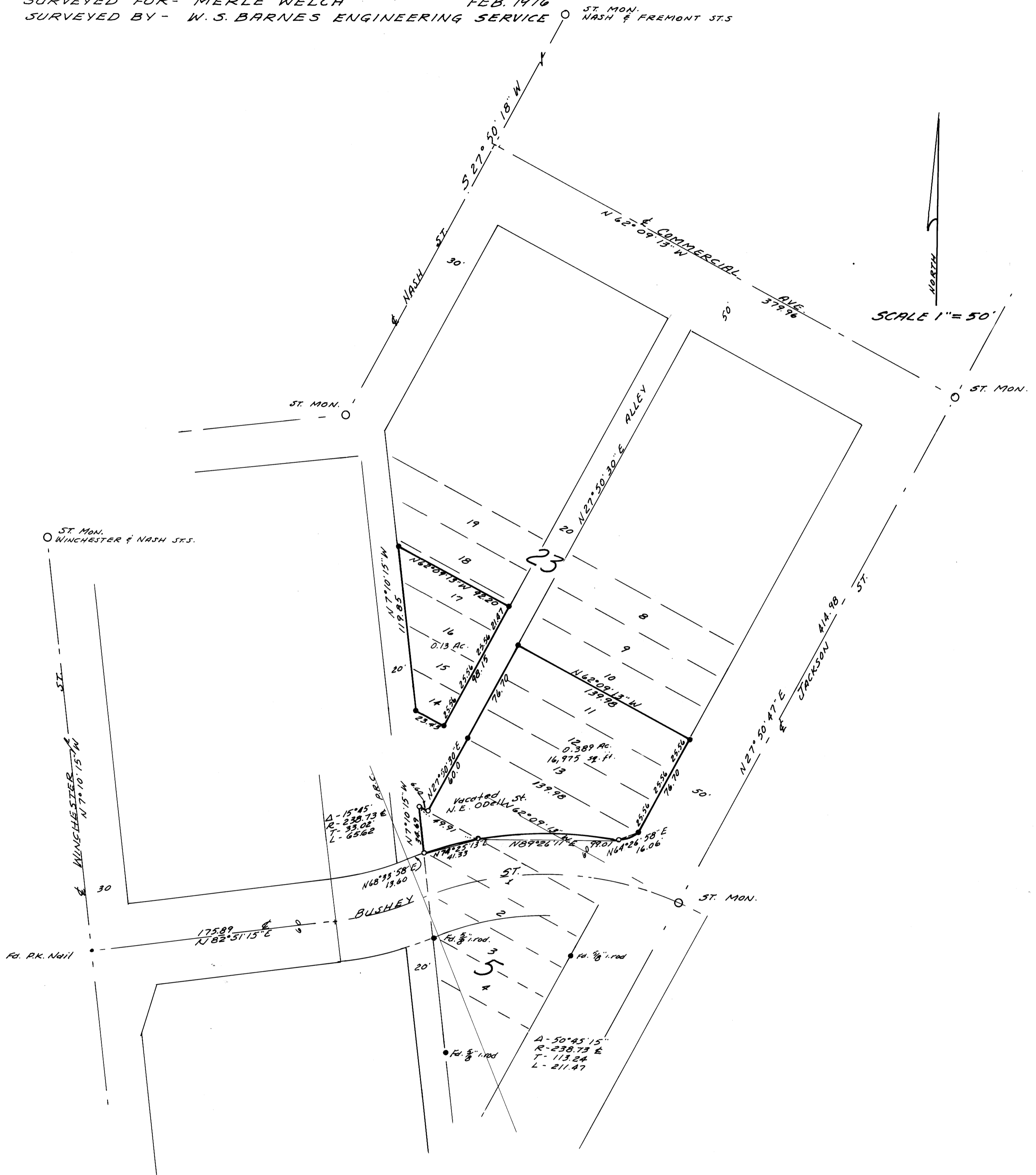
SURVEY TO SET PROPERTY CORNERS IN BLOCKS 5 & 23, KINNEY'S IMPROVED PLAT, ROSEBURG, ORE.

SEC. 18, T27S, R6W, W.M.

SURVEYED FOR - MERLE WELCH *R5W*
SURVEYED BY - W.S. BARNES ENGINEERING SERVICE

FEB. 1976

ST. MON. NASH & FREMONT STS.



- Monuments found, 3/4" iron rods, except as noted.
 - 5/8" iron rods set.
- Base bearing taken from Winchester St.
Reference - C.S. Maps - M 37-32 & M 25-59

