

COUNTY SURVEYORS FILE DATA
DO NOT REMOVE FROM OFFICE

FILED *my*
RECEIVED *2/7*

FEB 23 1976

COUNTY SURVEYOR
DOUGLAS COUNTY, ORE.

WEYERHAEUSER COMPANY

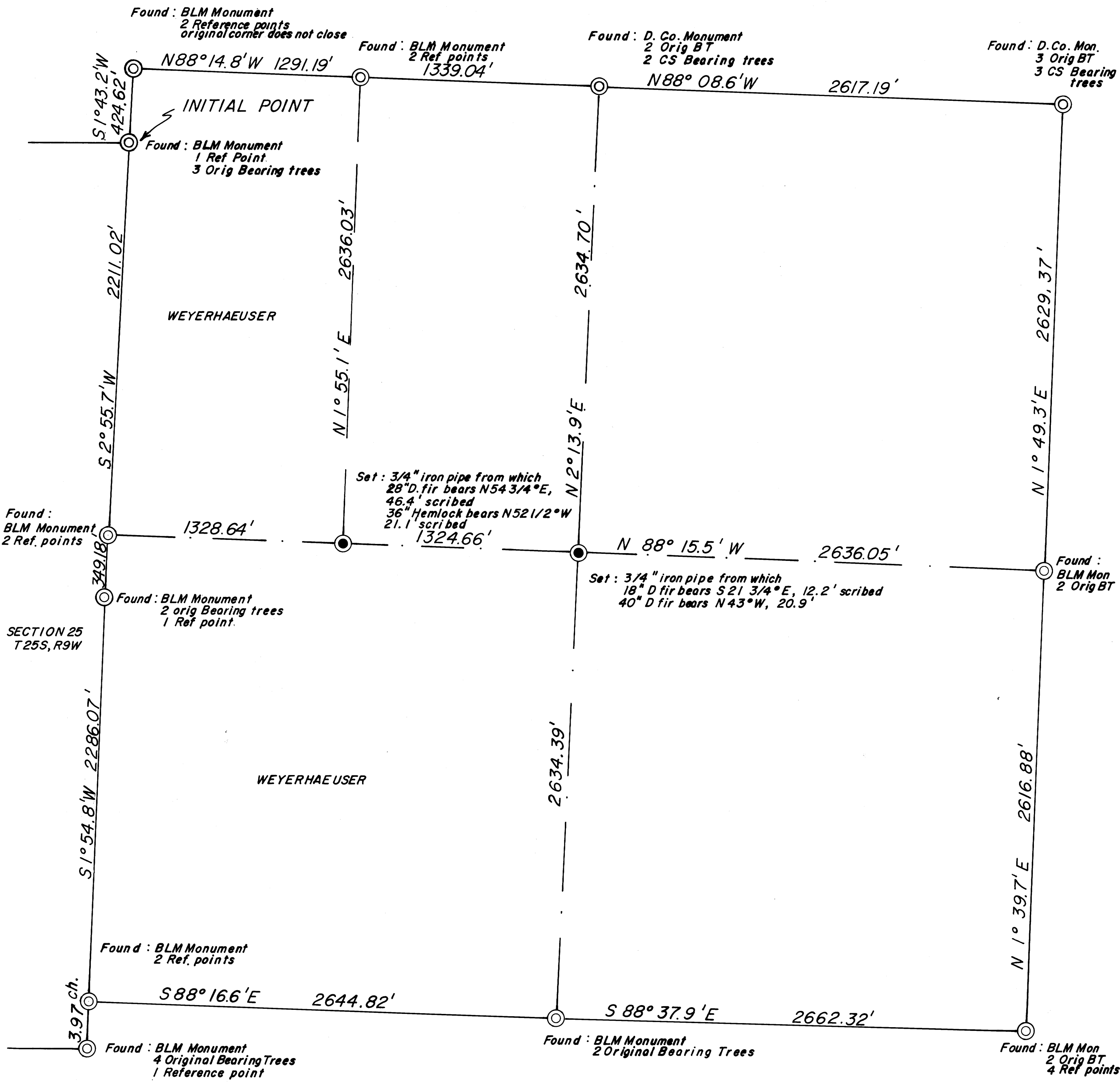
DELLWOOD ENGINEERING OFFICE

BOTTOM CREEK SURVEY

Section 30, T25S, R8W WM

DOUGLAS COUNTY, OREGON

FEBRUARY 6, 1976.



I DO HEREBY CERTIFY THAT THIS PLAT REPRESENTS A SURVEY CONDUCTED UNDER MY DIRECTION AND THAT THE MONUMENTS INDICATED HEREON WERE EITHER FOUND OR SET AS INDICATED.

REGISTERED
PROFESSIONAL
LAND SURVEYOR

Robert C. Adamer

OREGON
JULY 13, 1973
ROBERT C. ADAMER
999

APPROVED: _____
H. R. REPPETO
REGION ENGINEER

SCALE: 1" = 400'
SOLAR OBSERVATION IS BASIS OF BEARINGS

58 / 92
M59-34

FILED
RECEIVED *ry*

FEB 23 1976

WEYERHAEUSER COMPANY
Bottom Creek Survey
Section 30, T25S, R8W, W.M.
Douglas County, Oregon

COUNTY SURVEYOR
DOUGLAS COUNTY, ORE.

General Information

In order to establish the location of Company property in Section 30, T25S, R8W, a survey was conducted. Equipment used on the survey included a wild T-16ED theodolite and a 300 foot K and E "Invincible" chain. The survey was initiated at the northeast corner of Section 25, T25S, R9W and consisted of a control traverse around the section and an inner traverse around Company ownership. Error of closure of the control traverse was 1/4500 and of the inner traverse 1/5000. The terrain is brushy, precipitious and difficult to survey. All bearings on the accompanying plat are based on a solar observation.

Corner Research

The following corners and/or their accessories were either found or set as indicated during the survey. Weyerhaeuser Company location posters and "W" nails were used on reference points for established corners. Additional corner information may be found in the field notes of the BLM's dependent resurvey of a portion of T25S, R8W.

NE Corner Section 25

① Found BLM monument with the following accessories:

- 55" D. Fir bears N64°E, 46 LKS. Original BT (record 24 LKS)
- 34" D. Fir bears S81 3/4°E, 11 LKS. Original BT
- 74" D. Fir bears S 4 1/2°W, 89 1/2 LKS. Original BT (record 46 LKS)
- 40" D. Fir bears N16 1/2°W, 14 LKS

② W 1/4 Corner Section 30 only

Found BLM monument with the following accessories:

- 38" D. Fir stump bears N56 1/2°W, 54.5 LKS.
- 40" D. Fir stump bears N25°W, 82 LKS.

③ E 1/4 Corner Section 25 only.

Found BLM monument with the following accessories:

- 66" D. Fir stump bears N54 3/4°E, 67 LKS. Original BT
- 54" D. Fir stump bears S51 1/2°W, 66 LKS. Original BT
- 6" stub bears S52°W, 50 LKS.

M 59-34

C. S. File No. 58/90A

FILED
RECEIVED *ry*

FEB 23 1976

COUNTY SURVEYOR
DOUGLAS COUNTY, ORE.

Southwest Corner Section 30 only (closing corner)

11-17
✓ (4) Found BLM monument with the following accessories:

36" D. Fir stump bears N54°E, 147 LKS.
66" D. Fir stump bears S85°E, 178 LKS.

Southeast Corner Section 25 only

✓ (5) Found BLM monument with the following accessories:

11-12
54" D. Fir stump bears N35°E, 79 LKS. Original BT
40" D. Fir stump bears S85°E, 25 LKS. Original BT
54" D. Fir stump bears S37 1/4°W, 49 LKS. Original BT
58" D. Fir stump bears N32 3/4°W, 50 LKS. Original BT
72" D. Fir stump bears N87°E, 71 LKS.

(6) S 1/4 Corner

✓ Found BLM monument with the following accessories:

28" Hemlock bears N8°W, 35 LKS. Original BT
18" Hemlock bears S6°E, 26 LKS. Original BT

1 SE Section Corner

✓ Found BLM monument with the following accessories:

11-12
36" Cedar bears N32°W, 11.9 feet. Original BT
20" Cedar bears S20°W, 50 LKS. Original BT
14" Cedar bears N87°E, 102 LKS.
33" D. Fir bears S28°E, 275 LKS.
8" Hemlock bears N15 1/2°E, 53 LKS.
10" Hemlock bears S9 1/2°E, 212 LKS.

30 E 1/4 Corner

✓ Found BLM monument with the following accessories:

11-12
62" D. Fir bears S81°E, 22 LKS. Original BT (record S65°E)
50" D. Fir bears S6 1/2°W, 22 LKS. Original BT (record S20°W)

NE Section Corner

✓ Found Douglas County monument with the following accessories:

11-12
52" D. Fir bears N15°E, 88 1/2 LKS. Original BT (record 99 LKS)
70" D. Fir bears S55°W, 94 LKS. Original BT
20" Yew bears N16 1/2°W, 20 LKS. Original BT
12" Hemlock bears N50°E, 57 LKS. CS BT
16" Hemlock bears S85°E, 36 LKS. CS BT
16" Hemlock bears S67°W, 27 LKS. CS BT

REN 53

FILED
RECEIVED *ry*

FEB 23 1976

COUNTY SURVEYOR
DOUGLAS COUNTY, ORE.

10) N 1/4 Corner

Found Douglas County monument with the following accessories:

70
REN # 52
11

- 48" D. Fir bears N87 1/2°E, 72 LKS. Original BT
- ✓ 44" D. Fir bears S3 1/4°E, 72 LKS. Original BT
- 10" D. Fir bears N1°W, 14 LKS. CS BT
- 9" Hemlock bears S43 1/2°E, 32 1/2 LKS. CS BT

W 1/16 Corner North Line

✓ Found BLM monument with the following accessories:

- 40" D. Fir bears N28°E, 36 LKS.
- 60" D. Fir bears S33°W, 54 1/2 LKS.

12) NW Corner Section 30 only (closing corner)

✓ Found BLM monument with the following accessories:

- 22" Hemlock bears N27 1/2°E, 150 LKS.
- 25" Hemlock bears S26°E, 19 LKS.

From this point the original closing corner of Sections 19 and 30 bears N88° - 14.8'W, 26.64 feet found 3/4" iron pipe from which:

- 40" D. Fir bears N40 1/2°E, 87 LKS. Original BT
- 33" D. Fir bears S57 1/4°E, 53 LKS. Original BT

13) CW 1/16 Corner

Set a 3/4" iron pipe from which:

- ✓ 28" D. Fir bears N54 3/4°E, 46.4 feet scribed CW 1/16 S30 RP
- 36" Hemlock bears N52 1/2°W, 21.1 feet scribed CW 1/16 S30 RP

14) C 1/4 Corner

Set a 3/4" iron pipe in a pile of rocks from which:

- 18" D. Fir bears S21 3/4°E, 12.2 feet scribed C 1/4 S30 RP
 - ✓ 40" D. Fir bears N43°W, 20.9 feet - not scribed
- Corner falls on top of rock bluff.

Approved: *H. R. Reppeto*
H. R. Reppeto
Region Engineer

Respectfully submitted,

REGISTERED
PROFESSIONAL
LAND SURVEYOR

Robert C. Adamek

R. C. Adamek
Dellwood District Engineer

OREGON
JULY 13, 1973
ROBERT C. ADAMEK
999

C. S. File No. 58/90c