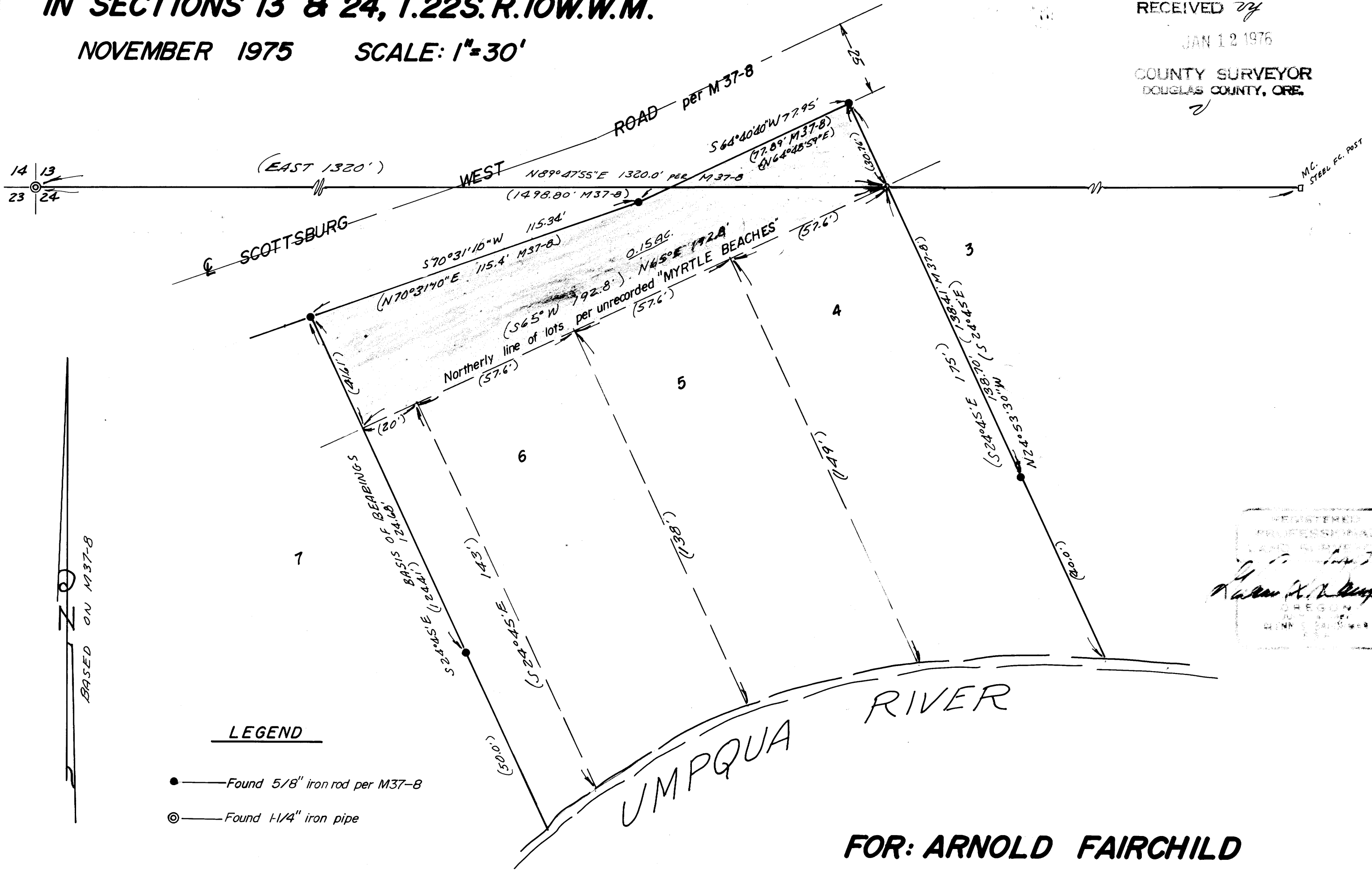


SURVEY TO LOCATE PROPERTY CORNERS IN SECTIONS 13 & 24, T.22S. R.10W. W.M.

NOVEMBER 1975 SCALE: 1"=30'

FILED ¹⁰⁰
RECEIVED ₇₂
JAN 12 1976

COUNTY SURVEYOR
DOUGLAS COUNTY, ORE.



REGISTERED
PROFESSIONAL
LAND SURVEYOR
Robert H. Baughman
OREGON
JULY 1961
DENNIS S. BAUGHMAN

FOR: ARNOLD FAIRCHILD
BY: BAUGHMAN SURVEYING SERVICE

COUNTY SURVEYORS FILE DATA
DO NOT REMOVE FROM OFFICE

MAP FILE M57 - 3

MAP FILE M57 - 3