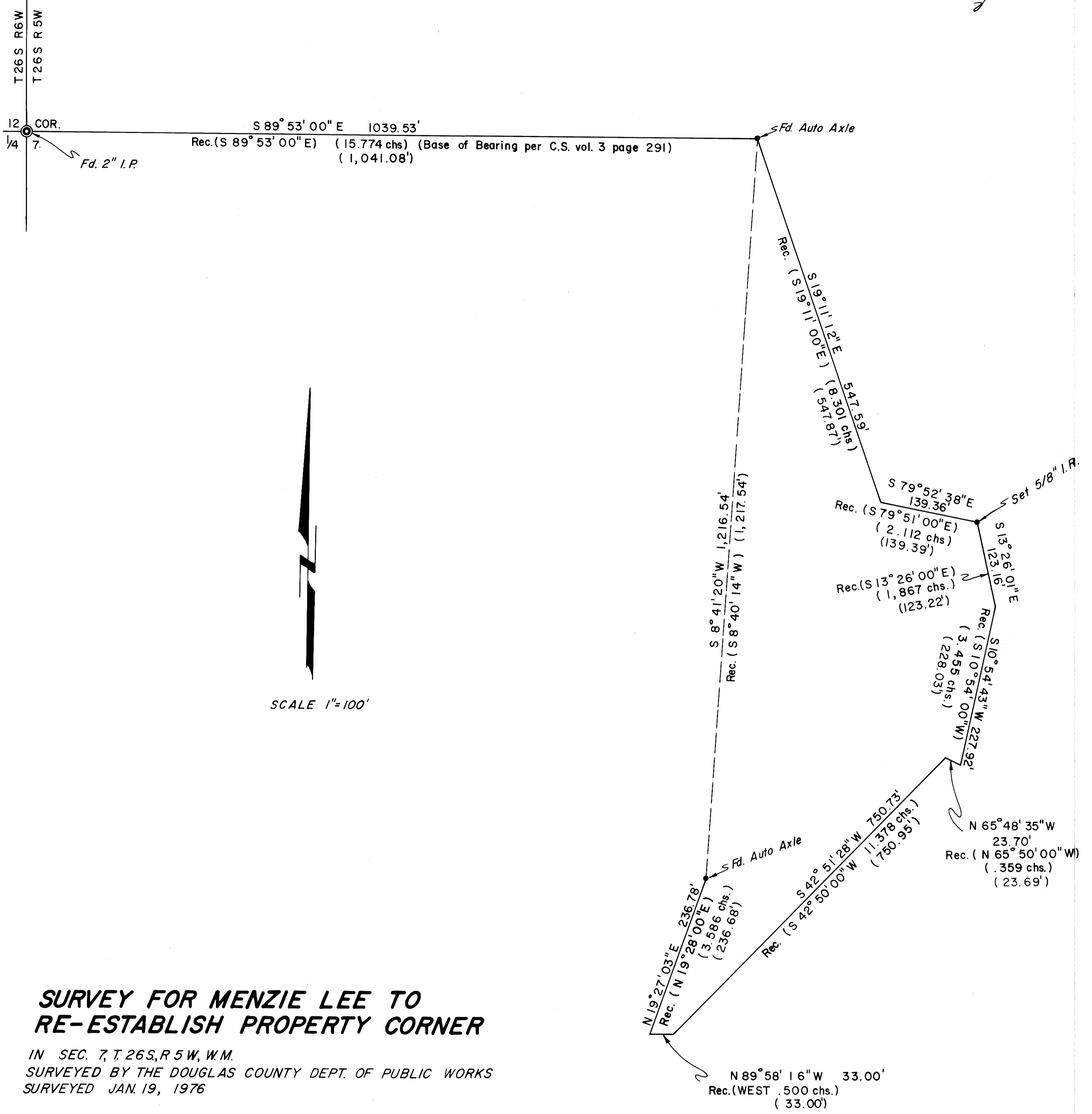


FILED  
RECEIVED  
DOUGLAS COUNTY, ORE.



SCALE 1"=100'

### SURVEY FOR MENZIE LEE TO RE-ESTABLISH PROPERTY CORNER

IN SEC. 7, T. 26 S, R. 5 W, W.M.  
SURVEYED BY THE DOUGLAS COUNTY DEPT. OF PUBLIC WORKS  
SURVEYED JAN. 19, 1976

COUNTY SURVEYORS FILE DATA  
DO NOT REMOVE FROM OFFICE

