

SURVEY TO SET PROPERTY CORNERS

IN SECTION 19, T.26S. R.3W. W.M.

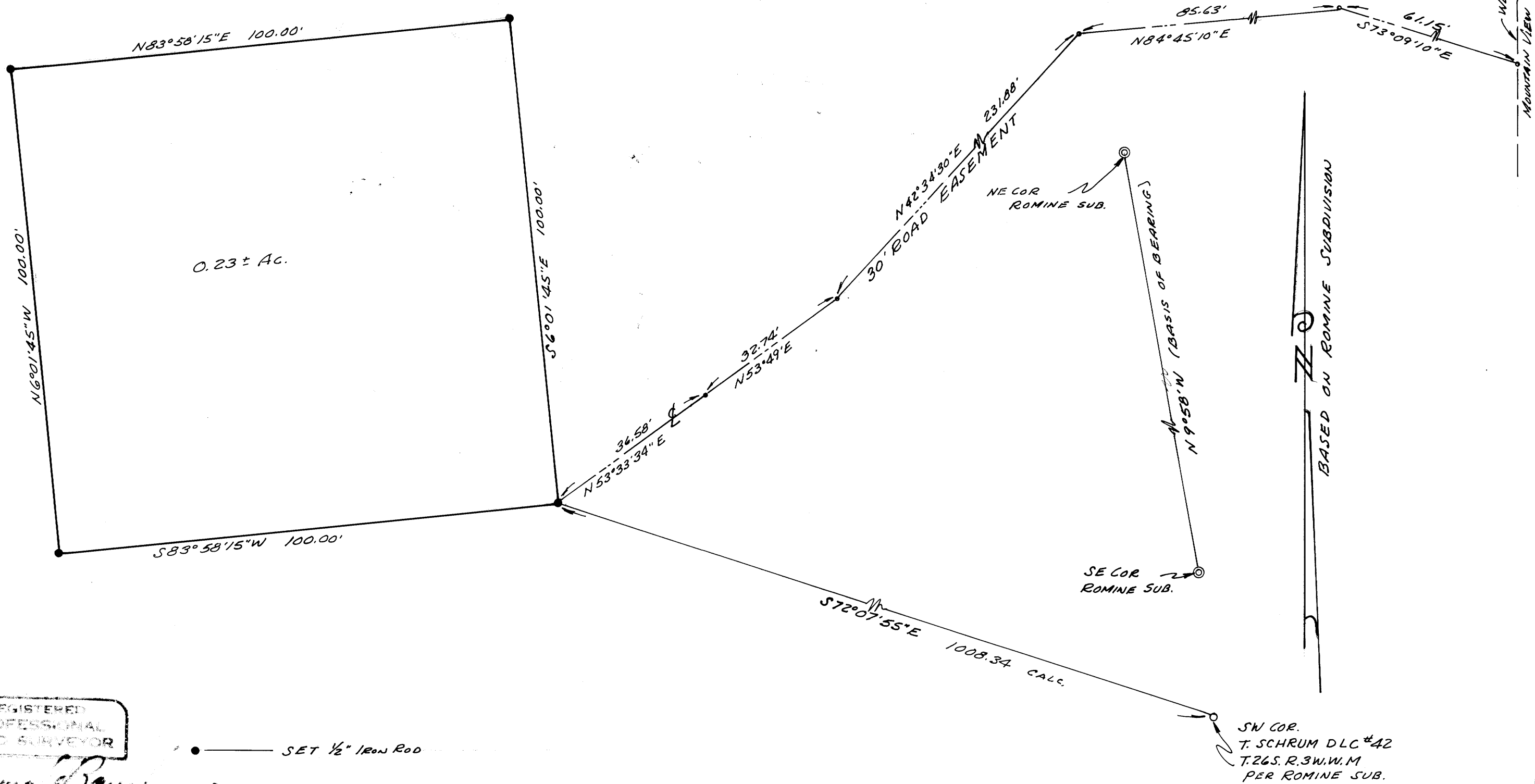
FOR: GLIDE WATER ASSOCIATION

BY: BAUGHMAN SURVEYING SERVICE

NOVEMBER 1975 SCALE: 1"=20'

COUNTY SURVEYORS FILE DATA
DO NOT REMOVE FROM OFFICE

FILED
RECORDED
JAN 12 1976
COUNTY SURVEYOR
DOUGLAS COUNTY, ORE.
2



REGISTERED
PROFESSIONAL
LAND SURVEYOR

Henry S. Baughman

OREGON
JAN 12 1976
HENRY S. BAUGHMAN
SURV

- SET 1/2" IRON ROD
- ⊙ FOUND 3/4" IRON ROD

MAP FILE M.52 - 2