

M 59-18

# SURVEY TO SET PROPERTY CORNERS

## IN SECTION 11, T.27S. R.6W.W.M.

### FOR: NEIL KASER

### BY: BAUGHMAN SURVEYING SERVICE

COUNTY SURVEYORS FILE DATA  
DO NOT REMOVE FROM OFFICE

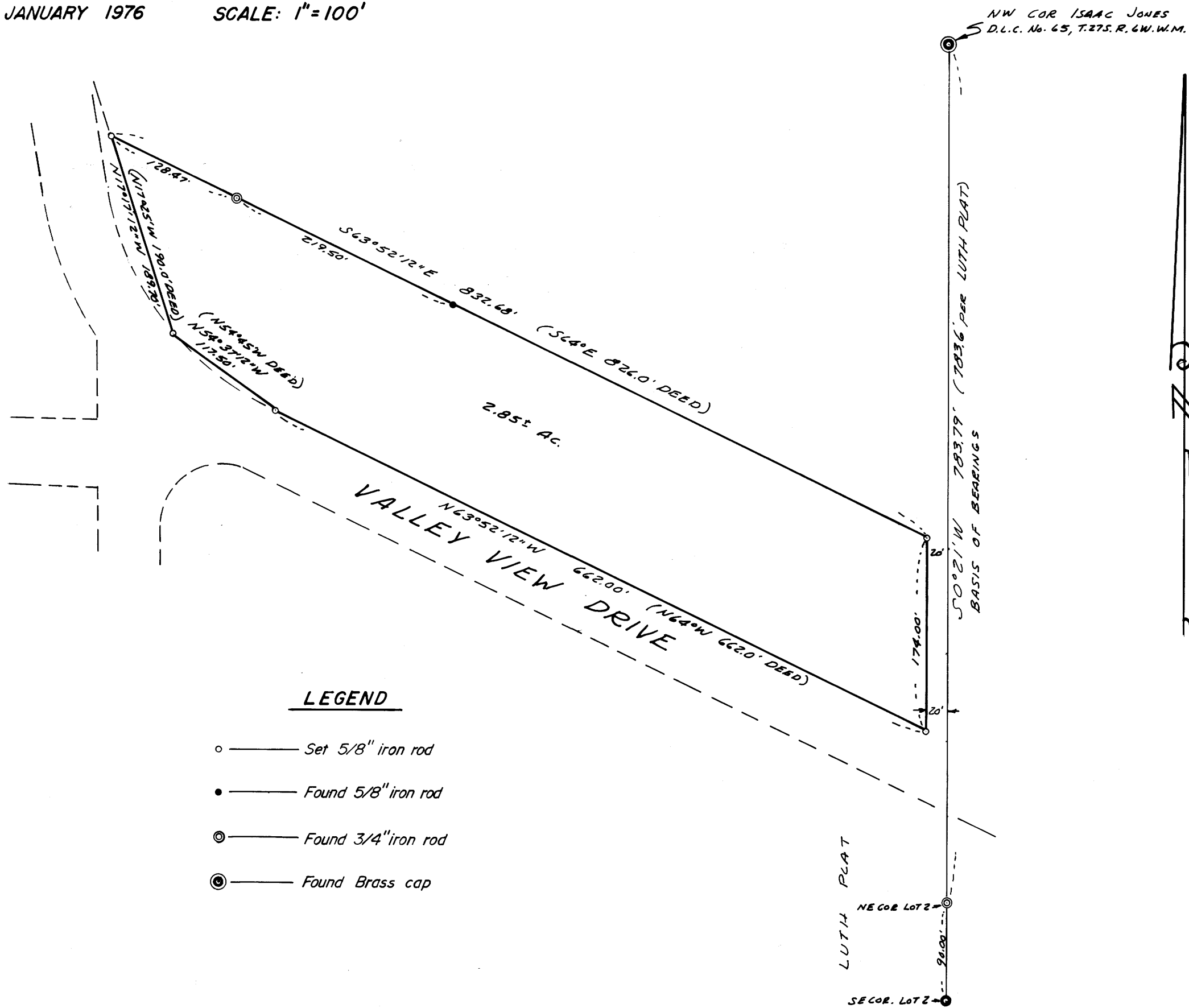
FILED  
RECEIVED *mg*

FEB 4 1976

COUNTY SURVEYOR  
CLATSOP COUNTY, ORE.

JANUARY 1976

SCALE: 1"=100'



#### LEGEND

- — Set 5/8" iron rod
- — Found 5/8" iron rod
- ⊙ — Found 3/4" iron rod
- ⊗ — Found Brass cap

BASED ON LUTH PLAT

*Adrian Baughman*  
 COUNTY SURVEYOR  
 CLATSOP COUNTY, ORE.

35503

MAP FILE M59-18

MAP FILE

MAP FILE