

COUNTY SURVEYORS FILE DATA
DO NOT REMOVE FROM OFFICE

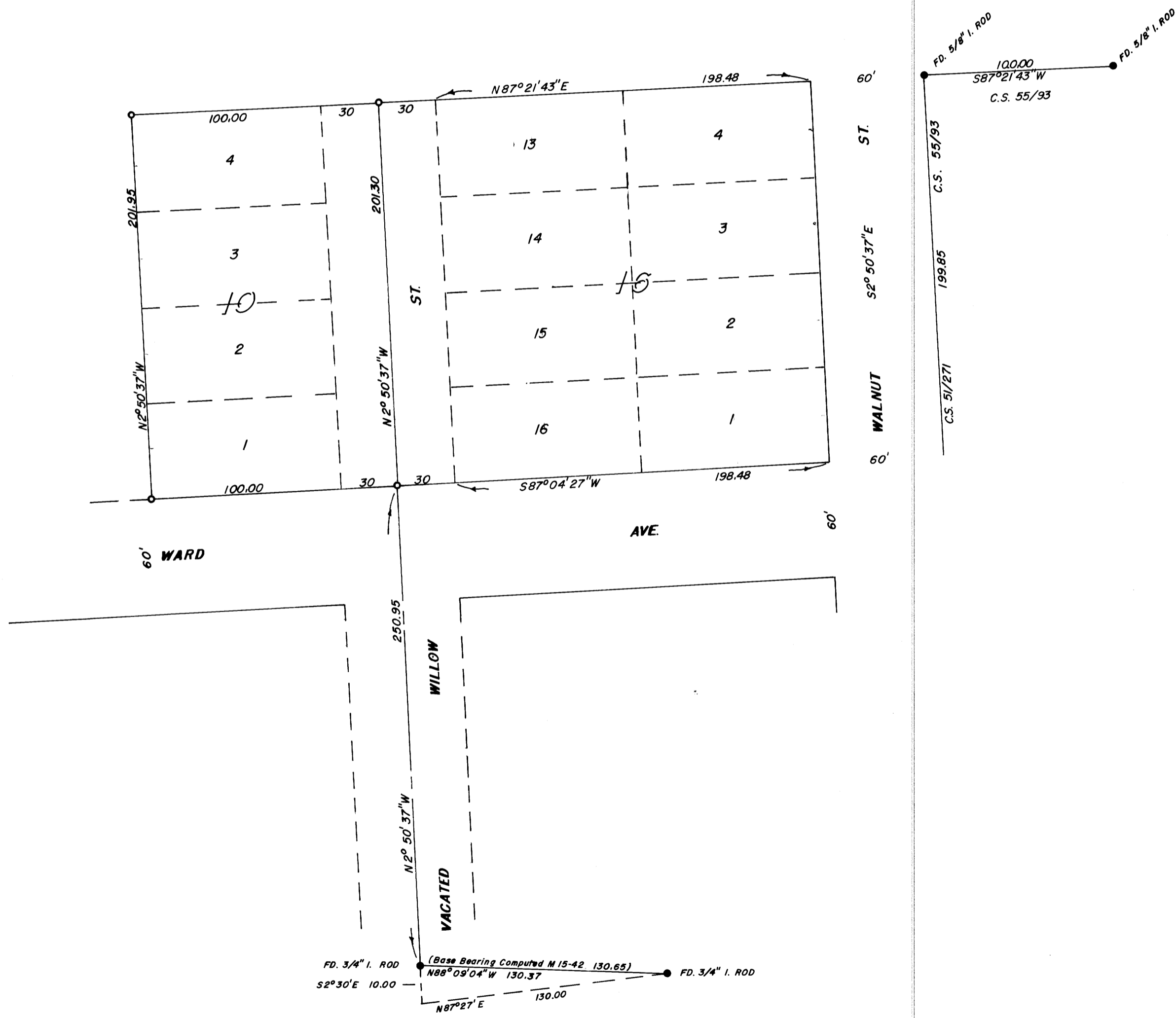
SURVEY OF BLOCKS 10 & 16, RIVERSIDE ADDITION TO ROSEBURG, SECTION 13, TWP. 27 STH., RNG. 6 WST., WIL. MER.
Surveyed for Carl Collins by Don E. Garrett
January 1976

0 - Set 5/8" I. Rod

Scale 1" = 50'

FILED 1/28
RECEIVED 1/28
FEB 8 1976
COUNTY SURVEYOR
DOUGLAS COUNTY, ORE.
2

MAP FILE M59-15



REGISTERED
PROFESSIONAL
LAND SURVEYOR

Don E. Garrett

OREGON
JULY 24, 1961
DON E. GARRETT
544

MAP FILE M59-15