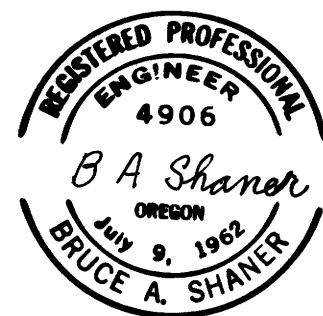
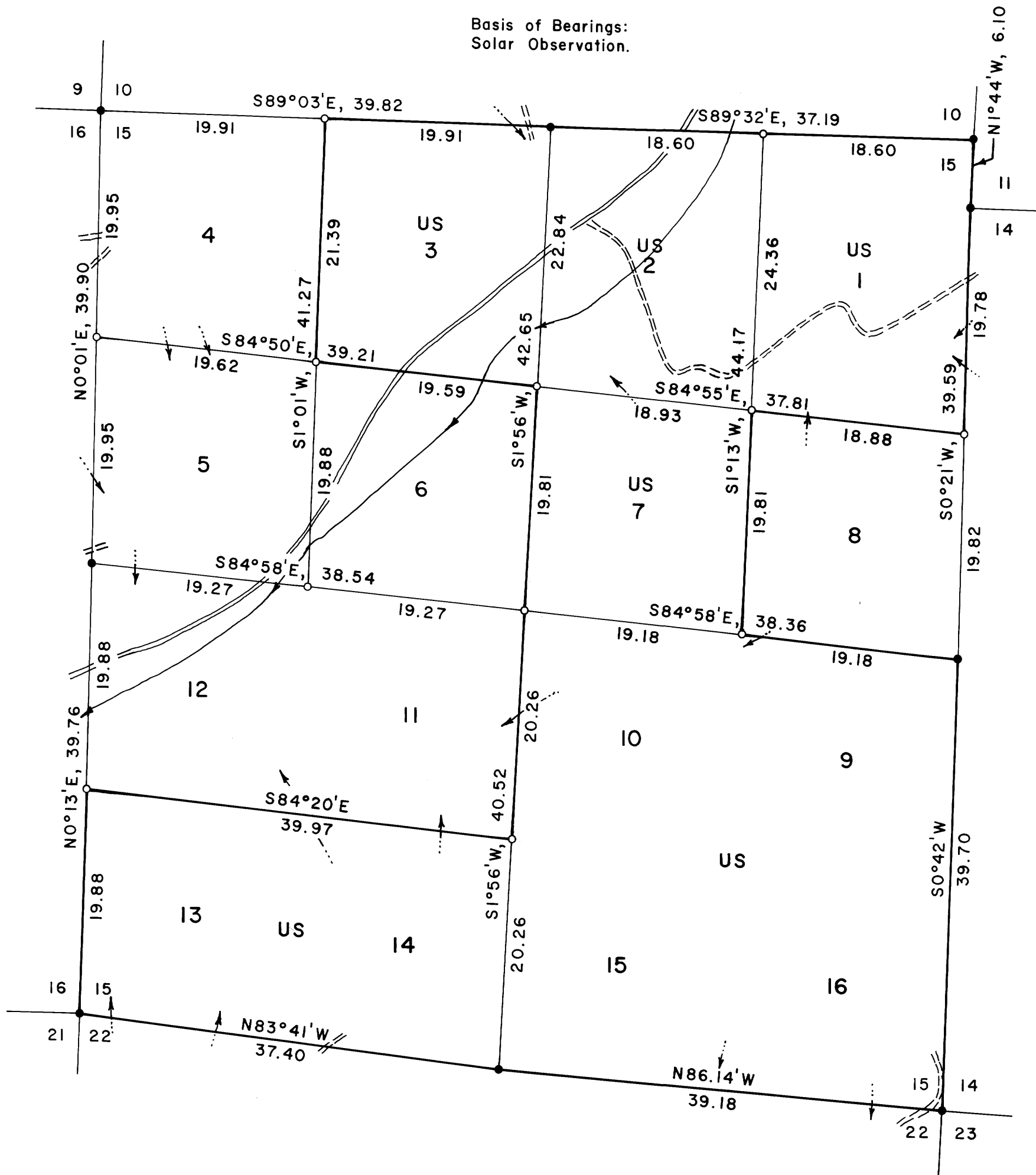


FILED KC
RECEIVED *ff*
JAN 8 1976
COUNTY SURVEYOR
DOUGLAS COUNTY, ORE.
7

PENDING REVIEW
IN WASHINGTON, D.C.

Basis of Bearings:
Solar Observation.



PROPERTY LINE SURVEY IN SEC. 15,
T. 29 S., R. 3 W., W.M., DOUGLAS
COUNTY, OREGON

LEGEND

For: Cadastral Engineer, U. S. Bureau of
Land Management

- Corner found •
- Corner set (brass cap) ○
- True line marked with steel fence posts and boundary tags ———
- Line run ———
- Main line road =====
- Dirt road - - - - -
- Stream ~~~~~

By: Shaner Engineering, Inc.

November 22, 1975 Contract No. 525-CT5-1117

Note: For corner information see field notes on file with the Douglas County Surveyor. Error of closure, 1:5000.



Scale: 1" = 10 Ch.

C.S. File 58/83

Map File M 58-77

C.S. File 58/83
Map File M 58-77

CS FILE FOLDER

CONTAINS

MORE

INFORMATION