

COUNTY SURVEYORS FILE  
DO NOT REMOVE FROM OFFICE

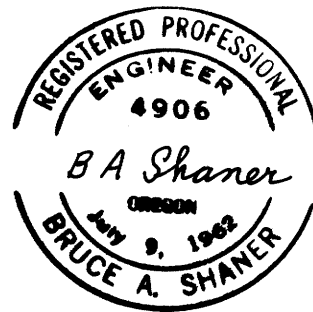
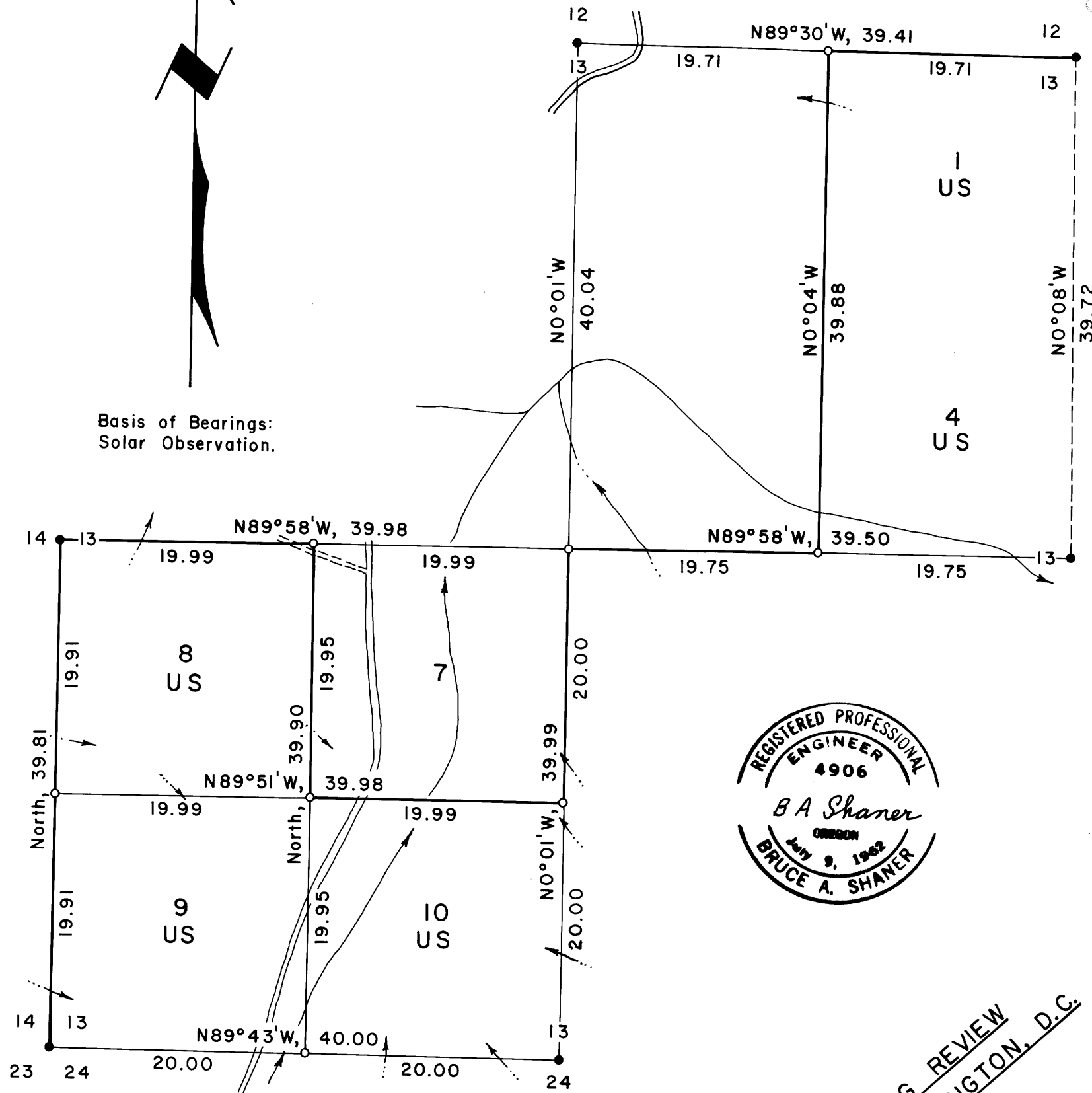
C.S. FILE M 58+76

C.S. FILE 58 1 82

FILED g c c  
RECEIVED 27

JAN 8 1976

COUNTY SURVEYOR  
DOUGLAS COUNTY, ORE.



PENDING REVIEW  
IN WASHINGTON, D.C.

PROPERTY LINE SURVEY IN SEC. 13,  
T. 29 S., R. 8 W., W.M., DOUGLAS  
COUNTY, OREGON

For: Cadastral Engineer, U. S. Bureau of  
Land Management

By: Shaner Engineering, Inc.

November 26, 1975 Contract No. 525-CT5-1117

Note: For corner information see  
field notes on file with the  
Douglas County Surveyor. Error  
of closure, 1:5000.



Scale: 1" = 10 Ch.

LEGEND

- Corner found •
- Corner set (brass cap) o
- True line marked with steel fence posts and boundary tags —————
- Line run —————
- Line computed, not run - - - - -
- Main line road =====
- Dirt road - - - - -
- Stream ~~~~~>

C.S. File 58 1 82

Map File M 58+76