

SURVEY FOR DOUGLAS COUNTY PUBLIC WORKS DEPT. T 32 S. R. 5 W. SEC. 19 W. M. (BARTON ROAD SOLID WASTE TRANSFER STATION)

FILED *hig*
RECEIVED *2/1*

DEC 24 1975

COUNTY SURVEYOR
DOUGLAS COUNTY, ORE.

PLSS # 140300 AND CS FILE 57/41
M 58-7

Surveyed by Douglas County Surveyor's Office
Francis L. Ingram County Surveyor
Scale: 1" = 100' Dec. 1975

REGISTERED
PROFESSIONAL
LAND SURVEYOR

Francis L. Ingram

OREGON
JULY 11, 1969
FRANCIS L. INGRAM
902

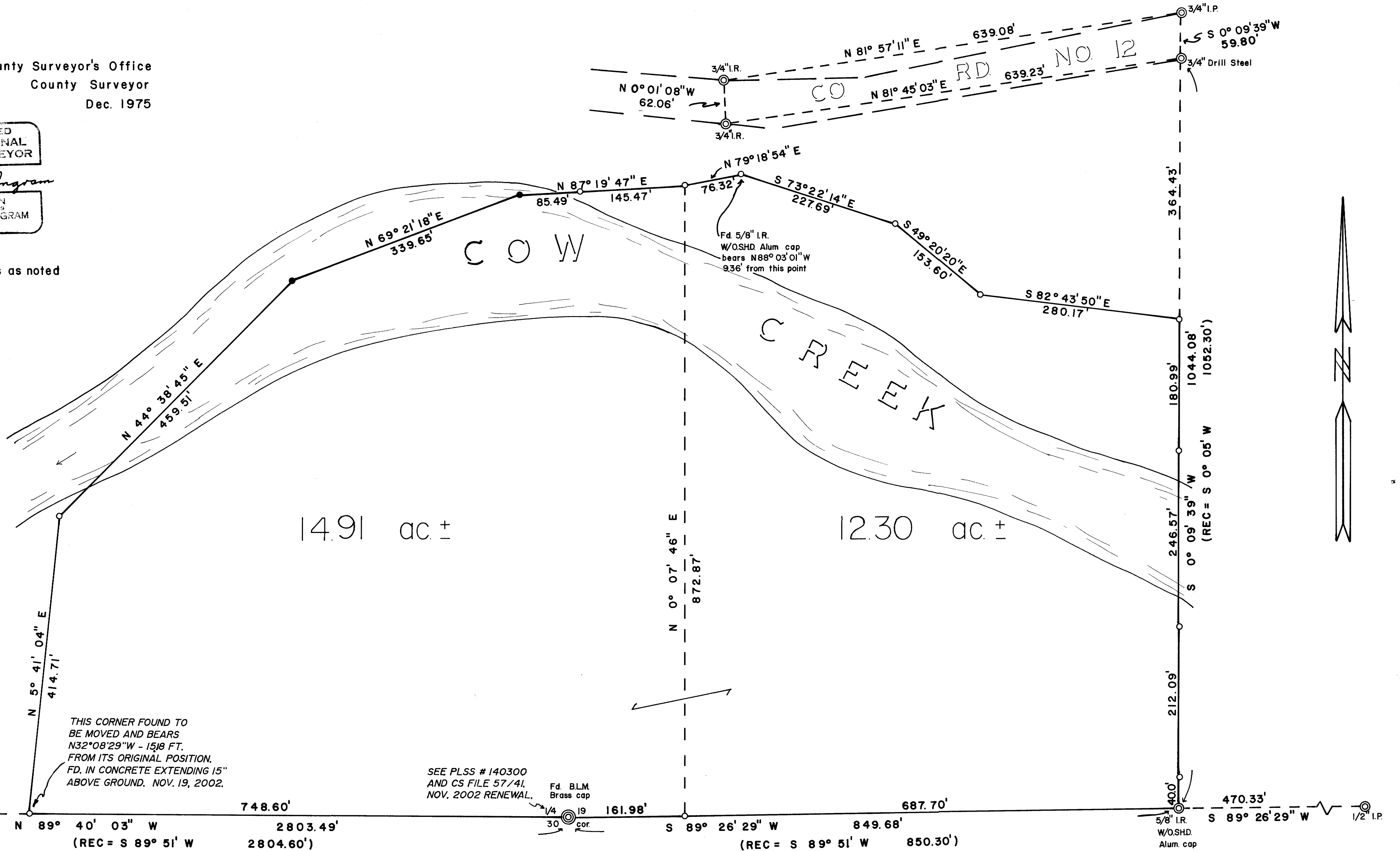
Legend:

- ⊙ Fd. monuments as noted
- Set 5/8" I.R.
- Not set

NOTE: Bearings And Distances Shown Are True.
Survey Based On The Oregon State Plane
Coordinate System, South Zone. Using
The Following Control Station:

PTS - 4
413,739.94
1,244,246.69

PTS - 3
413,908.01
1,239,822.73



THIS CORNER FOUND TO
BE MOVED AND BEARS
N32°08'29"W - 1518 FT.
FROM ITS ORIGINAL POSITION.
FD. IN CONCRETE EXTENDING 15"
ABOVE GROUND. NOV. 19, 2002.

SEE PLSS # 140300
AND CS FILE 57/41,
NOV. 2002 RENEWAL.

Fd. BLM
Brass cap

1/4" cor.

T 32
R 6 R 5

24 19
25 30
1/2" I.P.

N 89° 40' 03" W
(REC = S 89° 51' W)

748.60'
2803.49'
2804.60'

N 0° 07' 46" E
872.87'

S 89° 26' 29" W
(REC = S 89° 51' W 850.30')

S 0° 09' 39" W
1044.08'
1052.30'

S 89° 26' 29" W
470.33'
1/2" I.P.

PLSS # 140300 AND CS FILE 57/41
M 58-7

CS FILE FOLDER

CONTAINS

MORE

INFORMATION