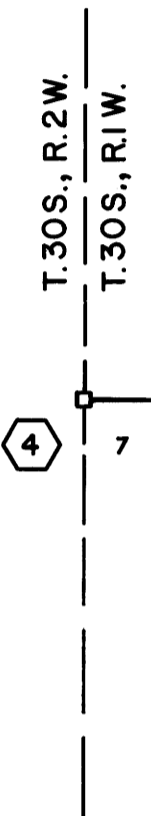
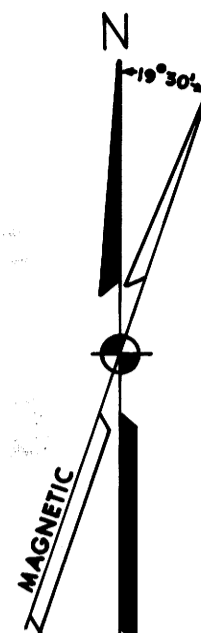


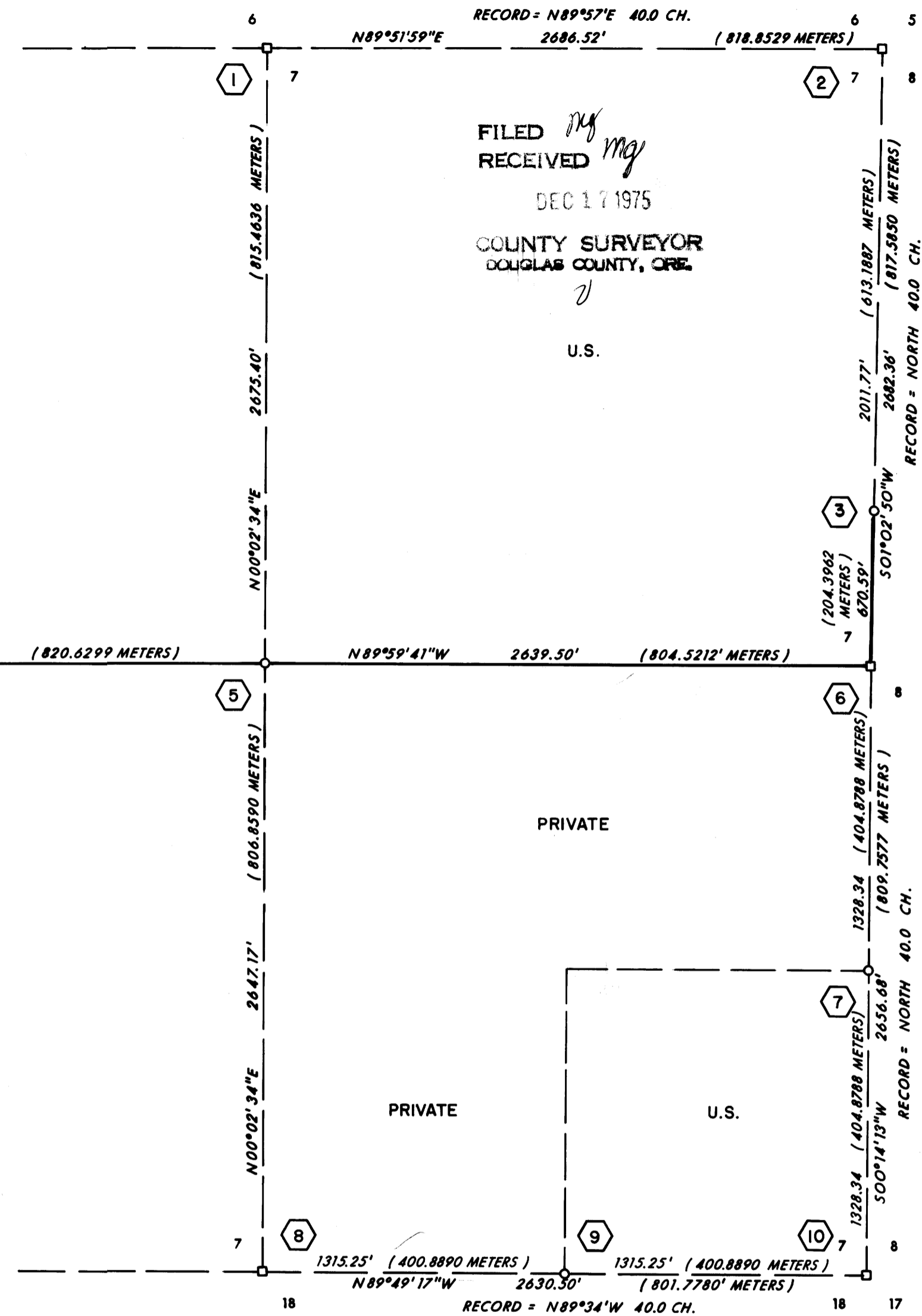
DESCRIPTION OF MONUMENTS AND ACCESSORY TIES

COUNTY SURVEYORS FILE DATA
DO NOT REMOVE FROM OFFICE

- 1 FOUND 2" PIPE WITH 3" BRASS DISK TOP STAMPED:
FROM WHICH: A 7" FIR BEARS S27°40'W 32.2' SCRIBED 1/4 S7 BT.
A 6" PINE BEARS N36°16'W 34.9' SCRIBED 1/4 S6 BT.
- 2 FOUND 1" PIPE WITH 2 1/2" BRASS DISK TOP STAMPED:
FROM WHICH: A 22" FIR BEARS N65°E 11.9'; SHOWS SCARS.
A 10" FIR BEARS S38°E 34.1' SCRIBED T30S RIW S8 CS BT.
A 20" FIR BEARS S70°W 28.3'; SHOWS SCARS.
A 18" FIR BEARS N10°W 30.4'; SHOWS SCARS.
- 3 SET 2" PIPE WITH 3" BRASS DISK TOP STAMPED:
FROM WHICH: A 13" FIR BEARS S45°19'E 43.0' SCRIBED SN 1/64 S8 BT.
A 9" CEDAR BEARS S04°23'W 40.1' SCRIBED SN 1/64 S7 BT.
- 4 FOUND 36" FIR MARKING THE W. 1/4 CORNER OF SECTION 7
FROM WHICH: A 22" PINE BEARS N7°E 23.8'; SHOWS SCARS.
A 12" OAK BEARS S85°E 20.5'; SHOWS SCARS.
A 1" PIPE WITH 2 1/2" BRASS DISK TOP,
SET 1.7' EAST OF CENTER OF FIR TREE STAMPED
- 5 SET 2" PIPE WITH 3" BRASS DISK TOP STAMPED:
FROM WHICH: A 10" CEDAR BEARS S01°16'E 75.3' SCRIBED C 1/4 S7 BT.
A 7" OAK BEARS N78°25'W 32.4' SCRIBED C 1/4 S7 BT.
- 6 FOUND 1" PIPE WITH 2 1/2" BRASS DISK TOP STAMPED:
FROM WHICH: A 20" HEMLOCK BEARS N49°E 11.9'; LOWER SCRIBE VISIBLE.
A 24" HEMLOCK BEARS S28°E 40.1'; SHOWS SCARS.
A 20" HEMLOCK (BLOWN DOWN) WAS N18°W 22.3'
- 7 SET 2" PIPE WITH 3" BRASS DISK TOP STAMPED:
FROM WHICH: A 17" CEDAR BEARS S31°49'E 47.7' SCRIBED S 1/16 S8 BT.
A 21" PINE BEARS N75°49'W 57.0' SCRIBED S 1/16 S7 BT.
- 8 FOUND 3" x 5" STONE MARKED FSM 1/4 S, SET 3" BRASS TABLET IN ROCK STAMPED:
FROM WHICH: A 6" OAK BEARS N2°E 21.6'; SCRIBED 1/4 S7 BT.
A 4" OAK BEARS S46°W 9.0'; SCRIBED 1/4 S18 BT.
- 9 SET 2" PIPE WITH 3" BRASS DISK TOP STAMPED:
FROM WHICH: A 7" FIR BEARS S74°45'E 13.1' SCRIBED E 1/16 S18 BT.
A 19" FIR BEARS N24°29'W 27.2' SCRIBED E 1/16 S7 BT.
- 10 FOUND 1" PIPE WITH 2 1/2" BRASS DISK TOP STAMPED:
FROM WHICH: A 14" FIR BEARS N17°E 23.8'; SHOWS SCARS.
A 16" FIR STUMP BEARS S24°E 23.1'; SHOWS SCARS.
A 18" FIR BEARS N86°W 15.2'; SHOWS SCARS.



LEGEND:
 □ = FOUND MONUMENT AS SHOWN.
 ○ = SET MONUMENT AS SHOWN.
 — = TRUE LINE POSTED WITH STEEL FENCE POSTS AND GOVERNMENT PROPERTY SIGNS.
 BASIS OF BEARINGS: POLARIS OBSERVATION.
 FIELD BOOKS REFERENCED UNDER CONTRACT NO. 004938 N,
 FIELD BOOKS 1, 3, 4, 6, 7 & 8.

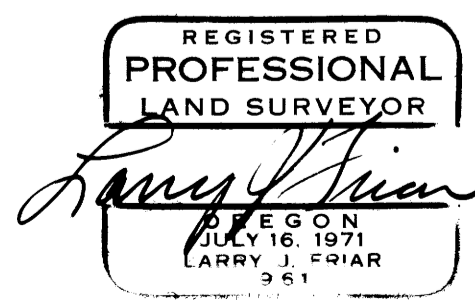


FILED
RECEIVED
DEC 17 1975

COUNTY SURVEYOR
DOUGLAS COUNTY, ORE.

PLAT OF SURVEY
FOR
THE UNITED STATES DEPARTMENT OF AGRICULTURE
UMPQUA NATIONAL FOREST
CONTRACT NO. 004938N
LOCATED IN SECTION 7, T.30S., R.1W., W.M.
DOUGLAS COUNTY SCALE: 1"=500'
OREGON NOVEMBER, 1975
TILLER LAND SURVEY NO. 18
PREPARED BY
FRIAR-MOFFIT SURVEYING CO.
MEDFORD, OREGON

I, LARRY J. FRIAR, A REGISTERED LAND SURVEYOR IN THE STATE OF OREGON, HEREBY CERTIFY THAT THIS PLAT AND THE NOTES HEREON ARE A CORRECT REPRESENTATION OF A SURVEY I PERFORMED DURING NOVEMBER, 1975, FOR THE U.S. FOREST SERVICE, IN ACCORDANCE WITH THE STATUTES OF THE STATE OF OREGON AND THE ARTICLES OF MY CONTRACT.



Larry J. Friar
LARRY J. FRIAR
REGISTERED LAND SURVEYOR NO. 961

MAP FILE: M58-66

M58-66