

**COUNTY SURVEYORS FILE DATA  
DO NOT REMOVE FROM OFFICE**

FILED *My*  
RECEIVED *My*

DEC 16 1975

COUNTY SURVEYOR  
DOUGLAS COUNTY, ORE.

**SURVEY FOR DEED DESCRIPTION  
IN LOTS 12 & 13, BLOCK 13, PLAT "A",  
ROSEBURG HOME ORCHARD TRACTS**

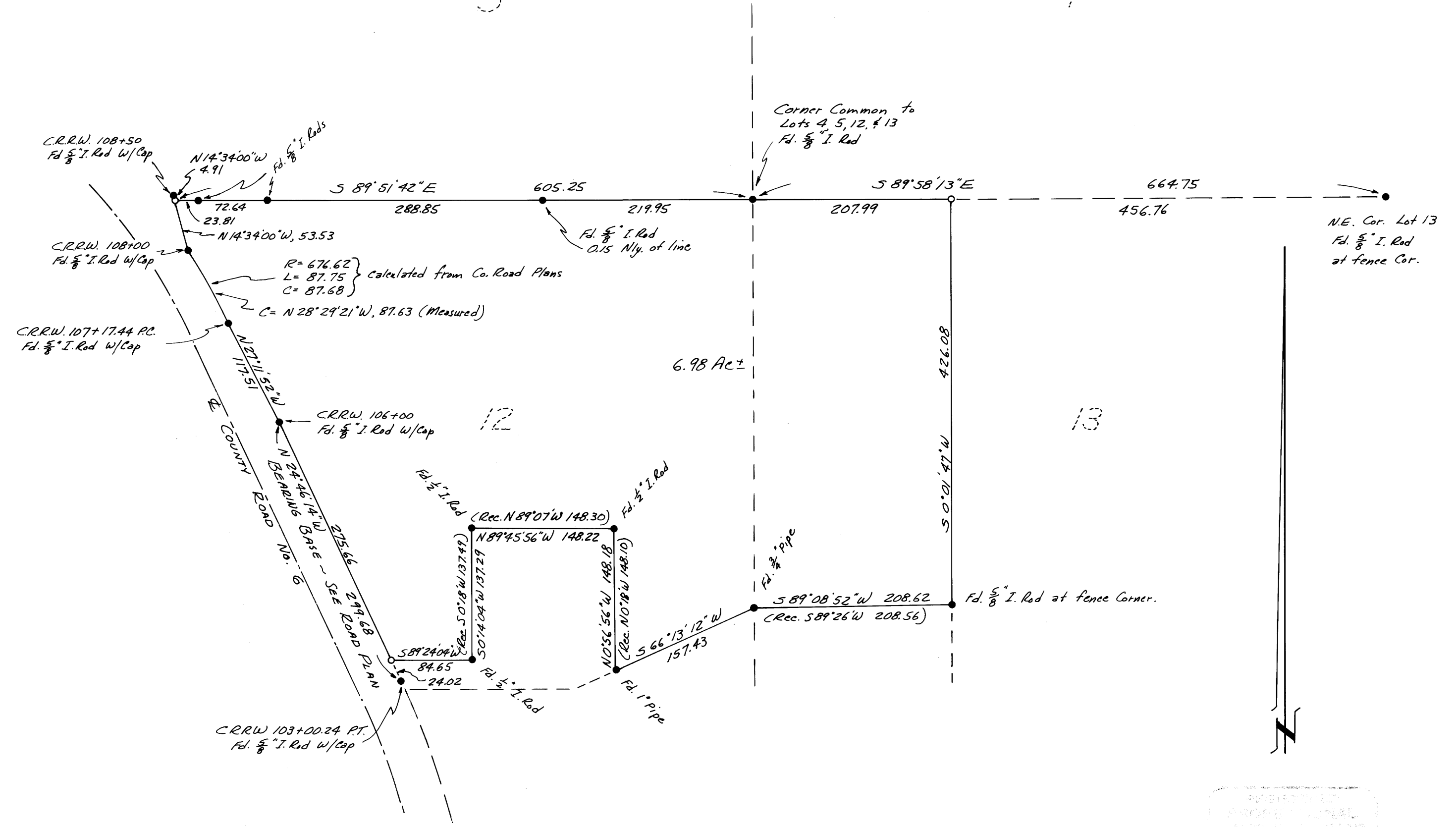
Surveyed for Mrs. E.G. Kohlhaugen by Victor M. McLind

December 1975

Scale: 1" = 100'

o ~ Indicates Set  $\frac{5}{8}$ " x 30" Iron Rod

T 26 S, R 6 W, SEC. 29



APPROVED  
PROFESSIONAL  
LAND SURVEYOR

Victor M. McLind

PROFESSOR  
OF SURVEYING  
1951

MSB-64

MSB-64