

COUNTY SURVEYORS FILE DATA
DO NOT REMOVE FROM OFFICE

FILED mg
RECEIVED mg

DEC 16 1975

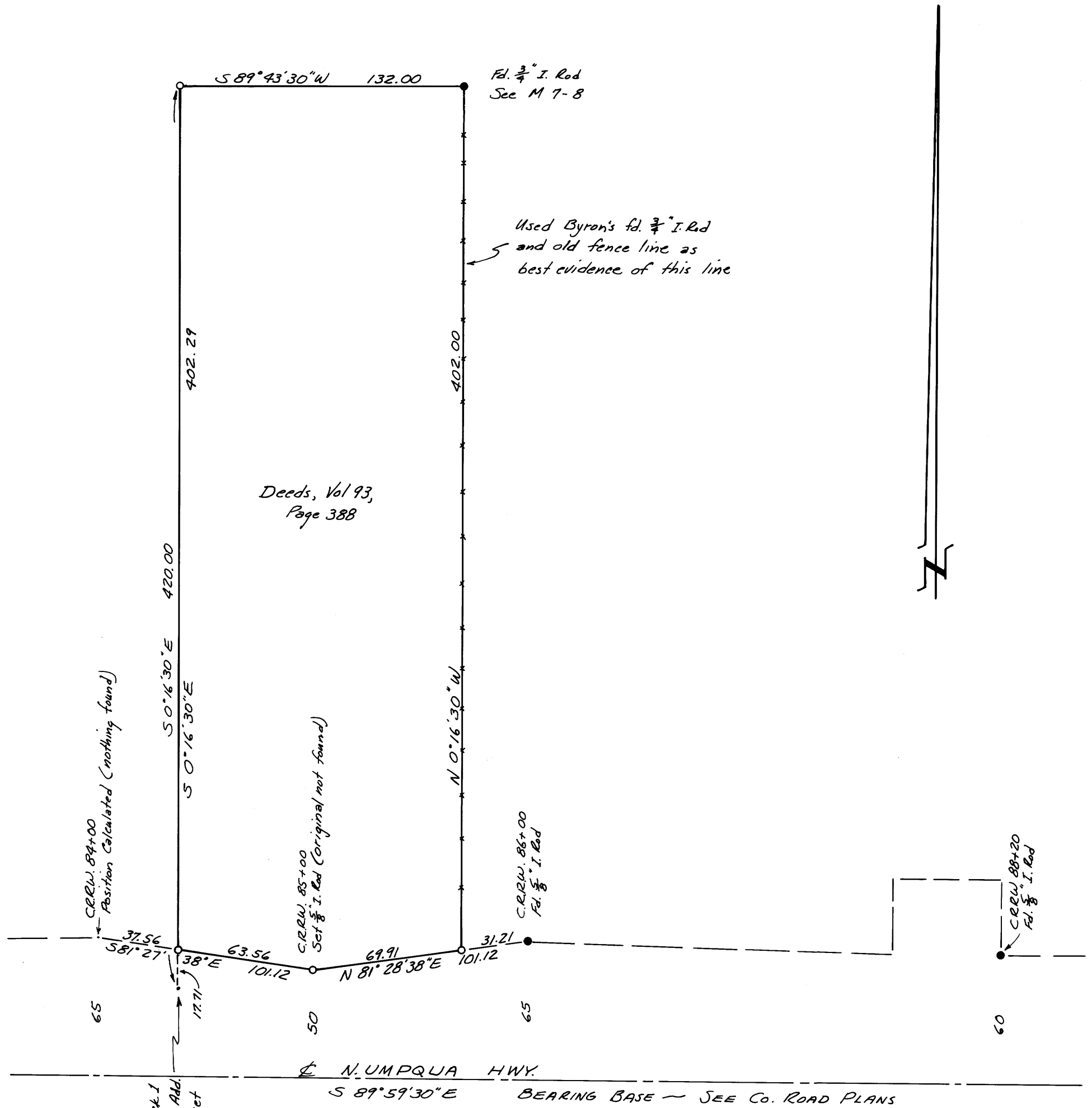
COUNTY SURVEYOR
DOUGLAS COUNTY, ORE

SURVEY TO SET PROPERTY CORNERS
IN BLOCK 1, THIRD BROOKSIDE ADDITION
Sec. 20, T27S, R5W, W.M.

Surveyed for Mrs. E.G. Kohlhagen by Victor M. McLind
December, 1975

Scale: 1" = 50'

o ~ Indicates Set $\frac{3}{8}$ " x 30" Iron Rod



REGISTERED
PROFESSIONAL
LAND SURVEYOR

Victor M. McLind

MAVON
JUL 17, 1950
VICTOR M. McLIND
524