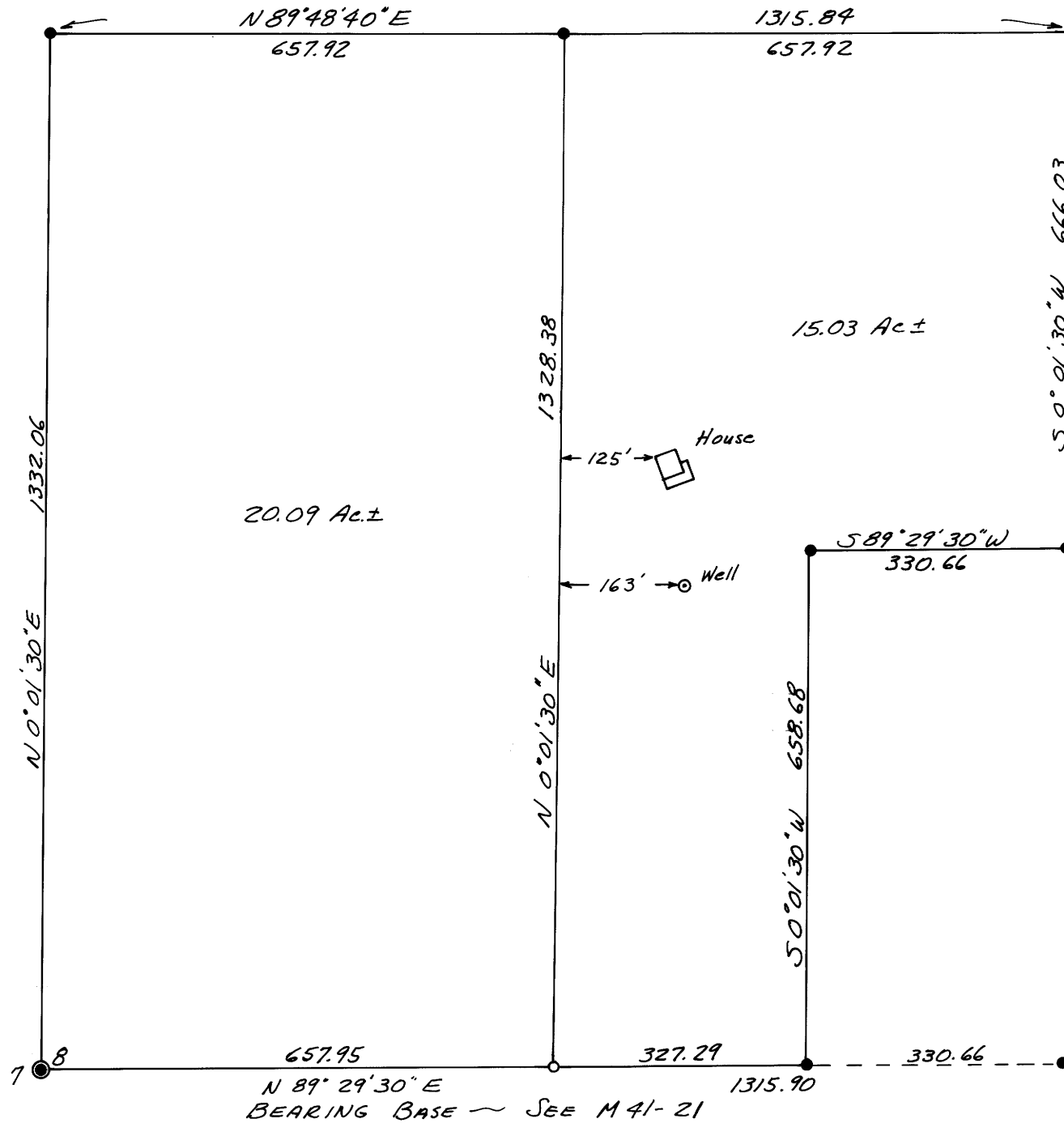


COUNTY SURVEYORS FILE DATA
DO NOT REMOVE FROM OFFICE

SURVEY FOR DEED DESCRIPTION
IN THE N.W. 1/4 OF SEC. 8, T25S, R6W, W.M.
Surveyed for Kenneth Vogt by Victor M. McLind
December, 1975

Scale: 1" = 200'

- — Indicates found 5/8" iron rod
- — Indicates Set 5/8" x 30" iron rod



1/4 Cor. between
Sections 7 & 8
Fd. Brass Cap in
fence corner.

FILED *mg*
RECEIVED *mg*
DEC 15 1975

COUNTY SURVEYOR
DOUGLAS COUNTY, ORE.



REGISTERED
PROFESSIONAL
LAND SURVEYOR

Victor M. McLind

OREGON
JULY 21 1925
VICTOR M. MCLIND
934

M 58-62

M 58-62