

**COUNTY SURVEYORS FILE DATA
DO NOT REMOVE FROM OFFICE**

SURVEY FOR DEED DESCRIPTION IN S.W. 1/4 SEC. 32, T32S, R6W, W.M.

Surveyed for John Oliver by Victor M. McLind
November 1975

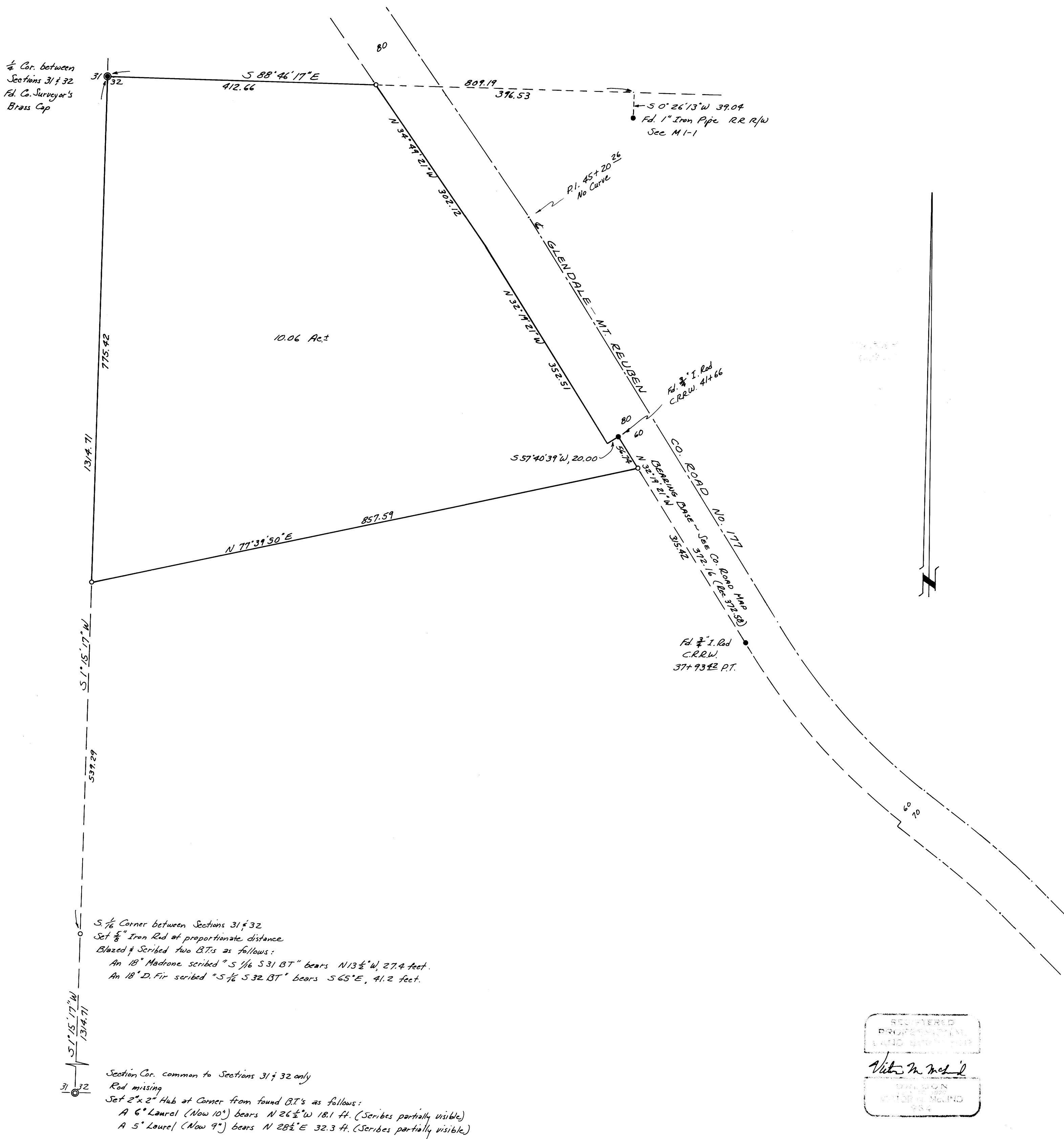
Scale: 1" = 100'

FILED *mg*
RECEIVED *oy*

DEC 1 1975

COUNTY SURVEYOR
DOUGLAS COUNTY, ORE.

o ~ Indicates Set 5/8" x 30" Iron Rod



S. 1/2 Corner between Sections 31 & 32
Set 5/8" Iron Rod at proportionate distance
Blazed & Scribered two B.T.'s as follows:
An 18" Madrone scribered "S 1/6 S 31 BT" bears N 13 1/2° W, 27.4 feet.
An 18" D. Fir scribered "S 1/6 S 32 BT" bears S 65° E, 41.2 feet.

Section Cor. common to Sections 31 & 32 only
Rod missing
Set 2" x 2" Hub at Corner from found B.T.'s as follows:
A 6" Laurel (Now 10") bears N 26 1/2° W 18.1 ft. (Scriber partially visible)
A 5" Laurel (Now 9") bears N 28 1/2° E 32.3 ft. (Scriber partially visible)

REGISTERED
PROFESSIONAL
LAND SURVEYOR
Victor M. McLind
DIVISION
OF LAND SURVEYING
1954