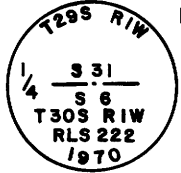
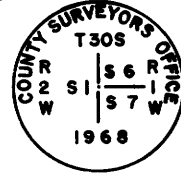


DESCRIPTION OF MONUMENTS AND ACCESSORY TIES

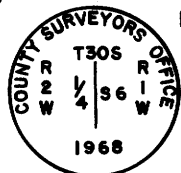
1 FOUND 2" PIPE WITH 2 1/2" BRASS DISK TOP STAMPED:
FROM WHICH: A 12" FIR BEARS N4°E 17.4'; SHOWS SCARS.
A 16" ALDER BEARS S66°E 7.2'; SCRIBE VISIBLE.
A 21" PINE BEARS S15°W 8.7'; SHOWS SCARS.
A 15" FIR BEARS N75°W 19.0'; SHOWS SCARS.



10 FOUND 1" PIPE WITH 2 1/2" BRASS DISK TOP STAMPED:
FROM WHICH: A 39" FIR BEARS S80°E 66.0' BARK SCRIBE VISIBLE.
A 9" FIR BEARS S71°E 30.4' SCRIBED T305 RIW S7 CS BT.
A 14" CEDAR BEARS N66°E 35.1' SCRIBED T305 RIW S6 CS BT.



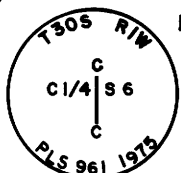
2 FOUND 1" PIPE WITH 2 1/2" BRASS DISK TOP STAMPED:
FROM WHICH: A 8" PINE BEARS S52°E 3.5'; SCRIBE VISIBLE.
A 12" PINE BEARS N85°E 12.0'; SCRIBE VISIBLE.
THE EAST 1/4 CORNER OF SECTION 1
T305 R2W BEARS S0°51'37"E 80.94'
MARKED BY DOUGLAS CO. SURVEYORS
BRASS CAPPED PIPE



11 SET 2" PIPE WITH 3" BRASS DISK TOP STAMPED:
FROM WHICH: A 8" FIR BEARS N13°05'E 50.7' SCRIBED W-W 1/64 S6 BT.
A 7" FIR BEARS S33°36'E 11.9' SCRIBED W-W 1/64 S7 BT.



3 SET 2" PIPE WITH 3" BRASS DISK TOP STAMPED:
FROM WHICH: A 8" FIR BEARS S04°02'E 32.5' SCRIBED C1/4 S6 BT
A 8" FIR BEARS S84°25'W 23.9' SCRIBED C1/4 S6 BT



12 SET 2" PIPE WITH 3" BRASS DISK TOP STAMPED:
FROM WHICH: A 11" FIR BEARS S11°55'W 23.3' SCRIBED
E-W 1/64 S7 BT.
A 8" FIR BEARS N46°21'W 17.3' SCRIBED
E-W 1/64 S6 BT.



4 FOUND 34" FIR STUMP MARKING THE 1/4 SECTION CORNER
BETWEEN 6 1/2 S, FROM WHICH: A 11" FIR BEARS S89°E 46.1' SCRIBED 1/4 S5 BT.
A 8" FIR BEARS S61°E 32.6' SCRIBED 1/4 S5 BT.
A 1" PIPE WITH 2 1/2" BRASS DISK TOP,
SET 2' NORTH OF CENTER OF STUMP STAMPED



5 SET 2" PIPE WITH 3" BRASS DISK TOP STAMPED:
FROM WHICH: A 19" FIR BEARS N60°40'E 31.0' SCRIBED S 1/16 S6 BT.
A 10" FIR BEARS S20°52'E 23.7' SCRIBED S1/16 S6 BT.



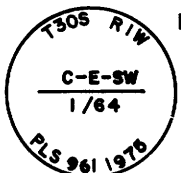
6 SET 2" PIPE WITH 3" BRASS DISK TOP STAMPED:
FROM WHICH: A 6" FIR BEARS S53°49'E 36.1' SCRIBED C-W-SW 1/64 S6 BT.
A 15" OAK BEARS N63°08'W 29.3' SCRIBED C-W-SW 1/64 S6 BT.



13 FOUND REMAINS OF STAKE IN GROUND UNDER ROCK
MOUND, SET 2" PIPE WITH 3" BRASS DISK TOP STAMPED:
FROM WHICH: A 7" FIR BEARS S27°40'W 32.2' SCRIBED
1/4 S7 BT.
A 6" PINE BEARS N36°16'W 34.9' SCRIBED
1/4 S6 BT.



7 SET 2" PIPE WITH 3" BRASS DISK TOP STAMPED:
FROM WHICH: A 17" FIR BEARS S87°58'E 52.7' SCRIBED C-E-SW 1/64 S6 BT
A 14" FIR BEARS S82°27'W 28.2' SCRIBED C-E-SW 1/64 S6 BT



14 FOUND 1" PIPE WITH 2 1/2" BRASS DISK TOP STAMPED:
FROM WHICH: A 22" FIR BEARS N65°E 11.9'; SHOWS SCARS.
A 10" FIR BEARS S38°E 34.1'; SCRIBED T305 RIW
S8 CS BT.
A 20" FIR BEARS S70°W 28.3'; SHOWS SCARS.
A 18" FIR BEARS N10°W 30.4'; SHOWS SCARS.



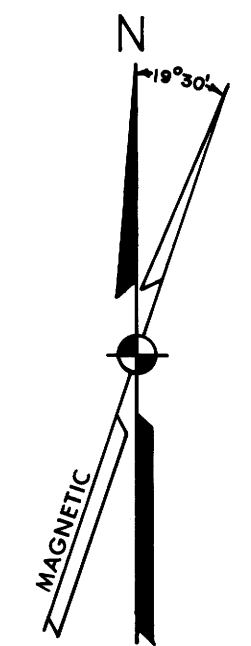
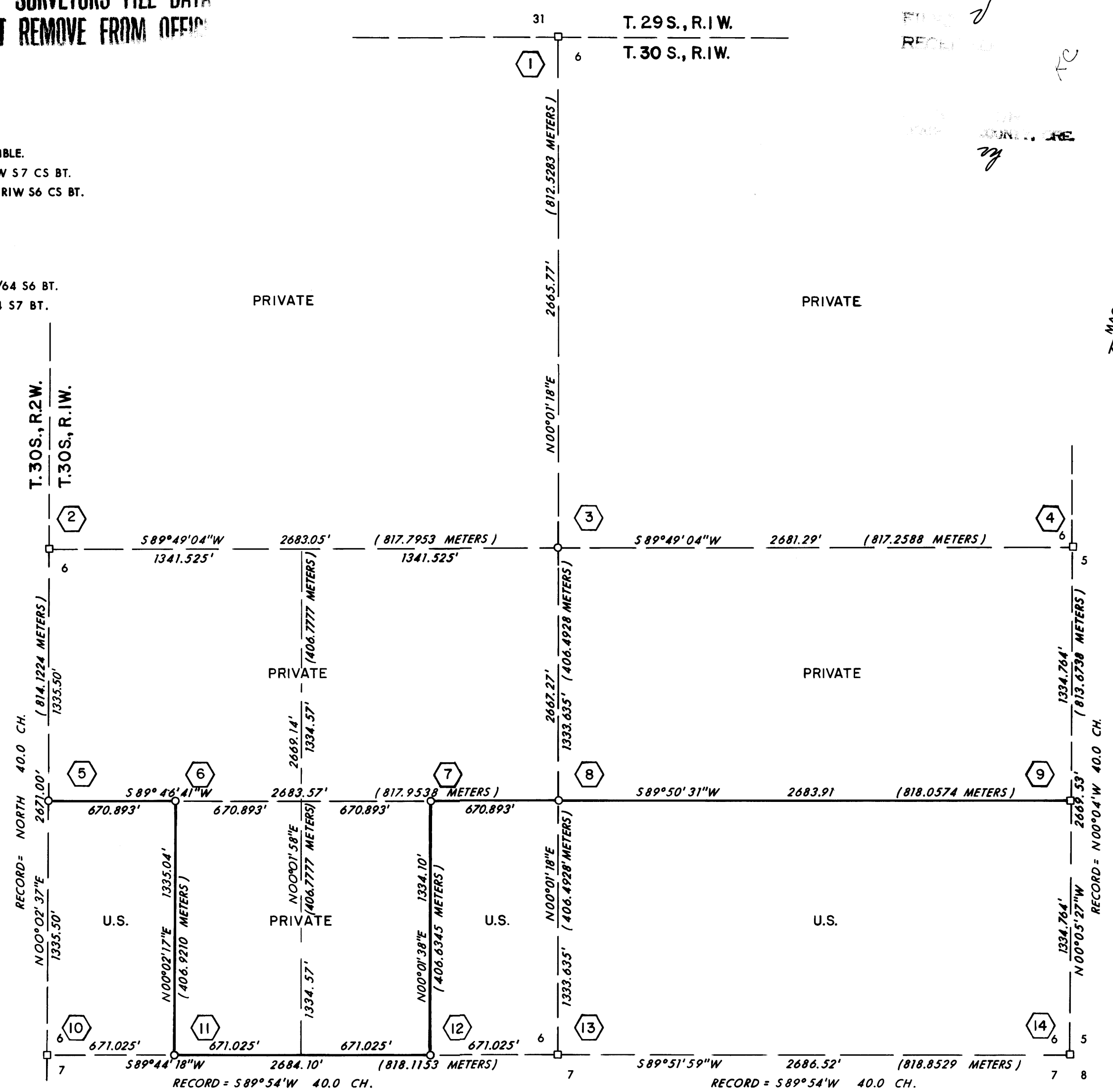
8 SET 2" PIPE WITH 3" BRASS DISK TOP STAMPED:
FROM WHICH: A 9" FIR BEARS N85°45'W 80.6' SCRIBED CS 1/16 S6 BT
A 8" FIR BEARS N28°16'W 43.4' SCRIBED CS 1/16 S6 BT



9 FOUND 2" PIPE WITH 3" BRASS DISK TOP STAMPED:
FROM WHICH: A 12" FIR BEARS S75°02'E 55.2' SCRIBED T305 RIW S 1/16 S5 BT.
A 11" FIR BEARS S73°28'W 18.8' SCRIBED T305 RIW S 1/16 S6 BT.



LEGEND:
□ = FOUND MONUMENT AS SHOWN.
○ = SET MONUMENT AS SHOWN.
— = TRUE LINE POSTED WITH STEEL FENCE POSTS AND GOVERNMENT PROPERTY SIGNS.
BASIS OF BEARINGS: POLARIS OBSERVATION.
FIELD BOOKS REFERENCED UNDER CONTRACT NO. 004938 N, BOOKS NO. 1, 3, 5, 6, 7 AND 8.



I, LARRY J. FRIAR, A REGISTERED LAND SURVEYOR IN THE STATE OF OREGON, HEREBY CERTIFY THAT THIS PLAT AND THE NOTES HEREON ARE A CORRECT REPRESENTATION OF A SURVEY I PERFORMED DURING NOVEMBER, 1975, FOR THE U.S. FOREST SERVICE, IN ACCORDANCE WITH THE STATUTES OF THE STATE OF OREGON AND THE ARTICLES OF MY CONTRACT.

Larry J. Friar
LARRY J. FRIAR
REGISTERED LAND SURVEYOR NO. 961

PLAT OF SURVEY
FOR
THE UNITED STATES DEPARTMENT OF AGRICULTURE
UMPQUA NATIONAL FOREST
CONTRACT NO. 004938N
LOCATED IN SECTION 6, T.30S., R.1W., W.M.
DOUGLAS COUNTY SCALE: 1"=500'
OREGON NOVEMBER, 1975
TILLER LAND SURVEY NO. 18
PREPARED BY
FRIAR-MOFFIT SURVEYING CO.
MEDFORD, OREGON

REGISTERED
PROFESSIONAL
LAND SURVEYOR
Larry J. Friar
OREGON
JULY 16, 1971
LARRY J. FRIAR
961