

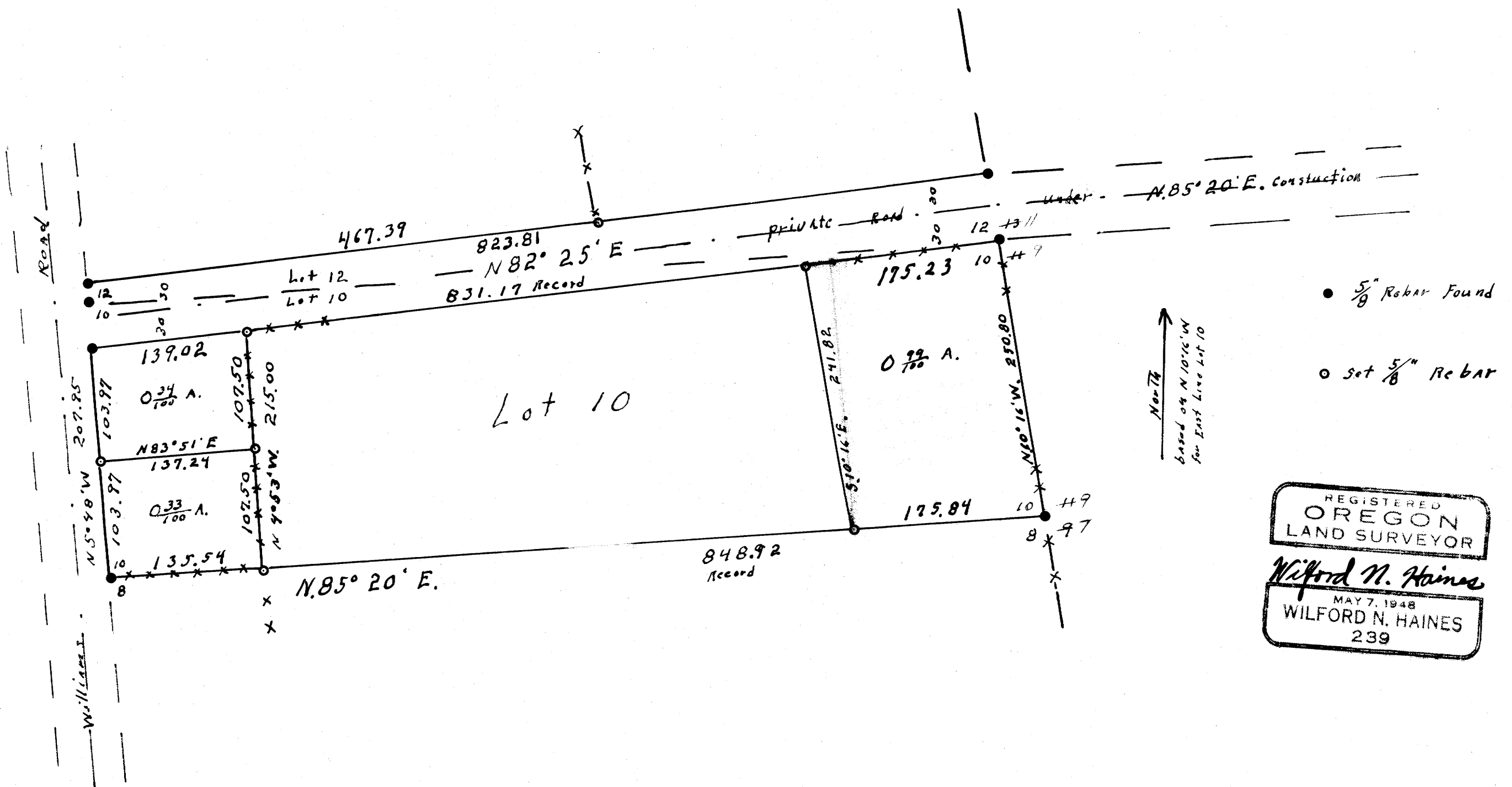
FILED
RECEIVED

MAY 14 1975

COUNTY SURVEYOR
DOUGLAS COUNTY, ORE.

29

SECTS. 3+4 T. 23 S., R. 5 W. W. M.
 BLOCK ONE Lot 10
 DEVORE'S ADDITION TO YONCALLA
 for
 PAUL REAVES YONCALLA, ORE.
 Scale 1" = 100' August 25, 1975



REGISTERED
 OREGON
 LAND SURVEYOR
 Wilford N. Haines
 MAY 7, 1948
 WILFORD N. HAINES
 239