

S-85W

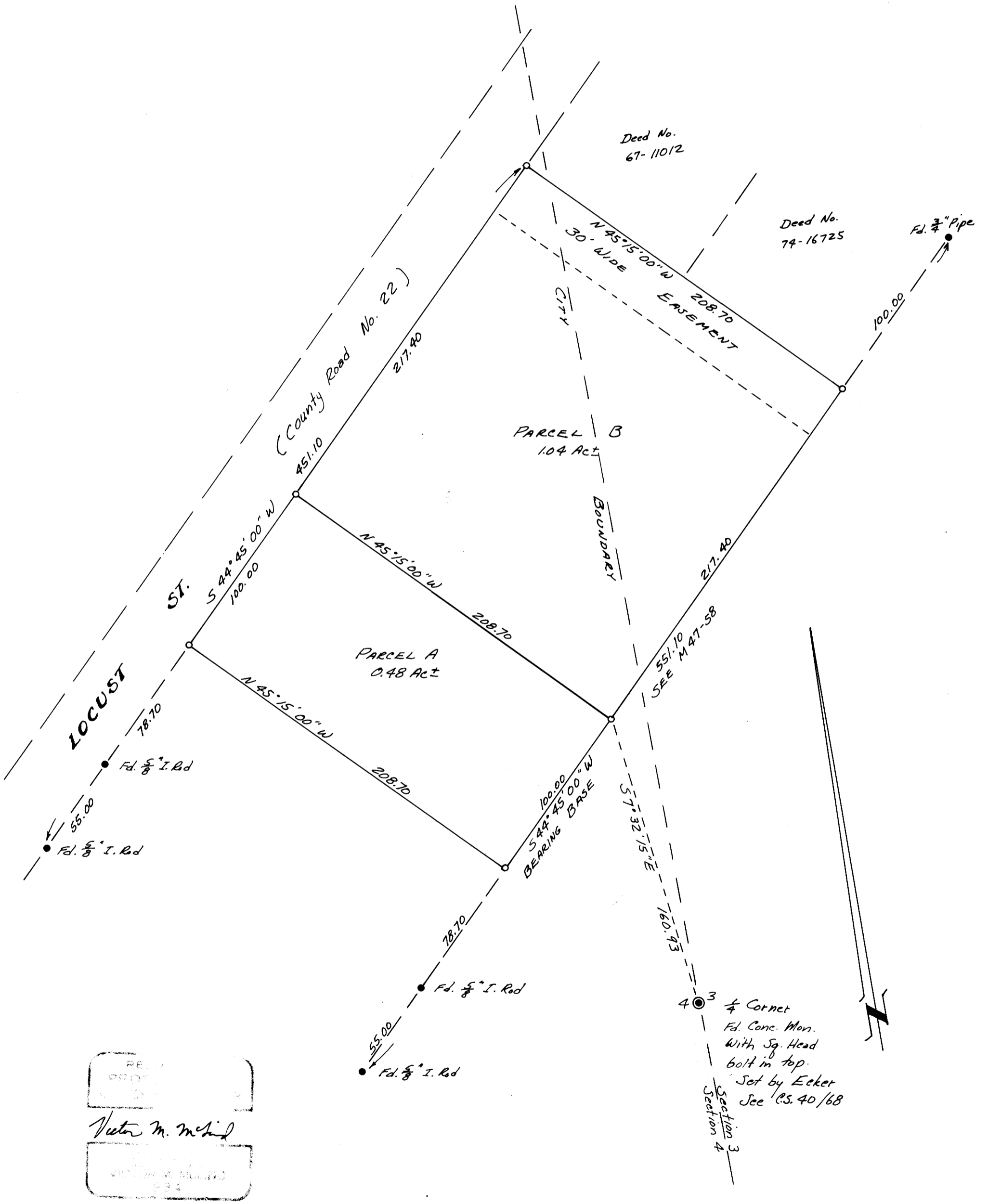
SURVEY IN SEC. 3 & 4, T25S, R5W, W.M.  
PARTIALLY IN CITY OF OAKLAND, DOUGLAS COUNTY, ORE.  
Surveyed for Margaret Milich by Victor M. McLind  
Sept. 1975

FILED  
RECEIVED *mgj*  
SEP 3 1975  
COUNTY SURVEYOR  
DOUGLAS COUNTY, ORE.  
✓

Scale: 1" = 50'

COUNTY SURVEYORS FILE DATA  
DO NOT REMOVE FROM OFFICE

○ Indicates Set  $\frac{5}{8}$ " x 30" Iron Rods



RECEIVED  
 VICTOR M. MCLIND  
 COUNTY SURVEYOR  
 DOUGLAS COUNTY, ORE.  
 934

MAP FILE M58-5