

SURVEY FOR DESCRIPTION
IN SECTIONS 29 & 30, T.26S. R.3W.W.M.
FOR: LYLE DOSS
BY: BAUGHMAN SURVEYING SERVICE

COUNTY SURVEYORS FILE DATA
 DO NOT REMOVE FROM OFFICE

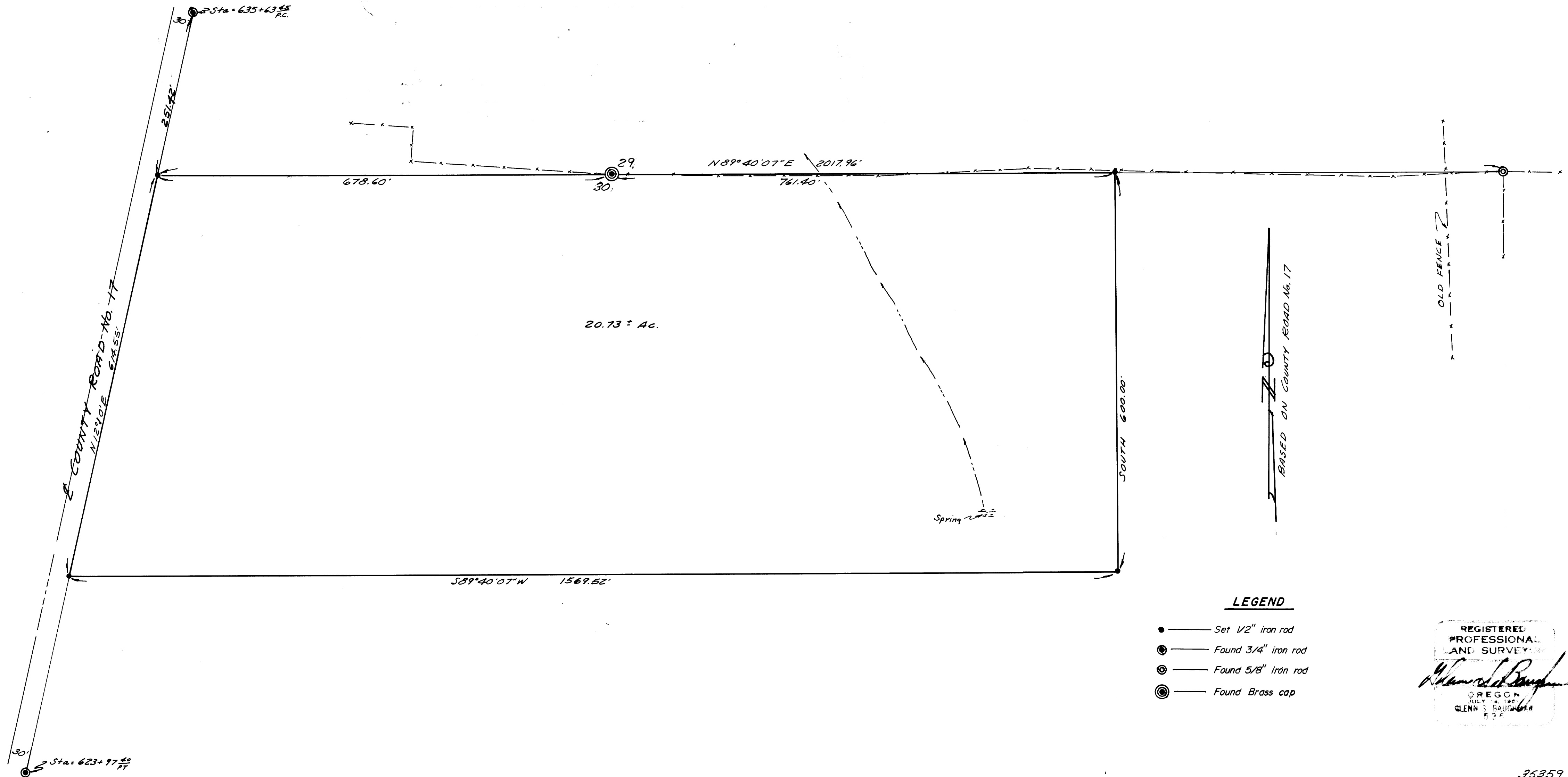
OCTOBER 1975

SCALE: 1"=100'

FILED /
 RECEIVED /

BAUGHMAN SURVEYING
 JEFFERSON COUNTY, ORE
 /

MAP FILE 12-58-118...



LEGEND

- — Set 1/2" iron rod
- ⊙ — Found 3/4" iron rod
- ⊙ — Found 5/8" iron rod
- ⊙ — Found Brass cap

REGISTERED
 PROFESSIONAL
 LAND SURVEYOR
Glenn S. Baughman
 OREGON
 JULY 4, 1961
 GLENN S. BAUGHMAN
 S.S.P.

MAP FILE 12-58-118...