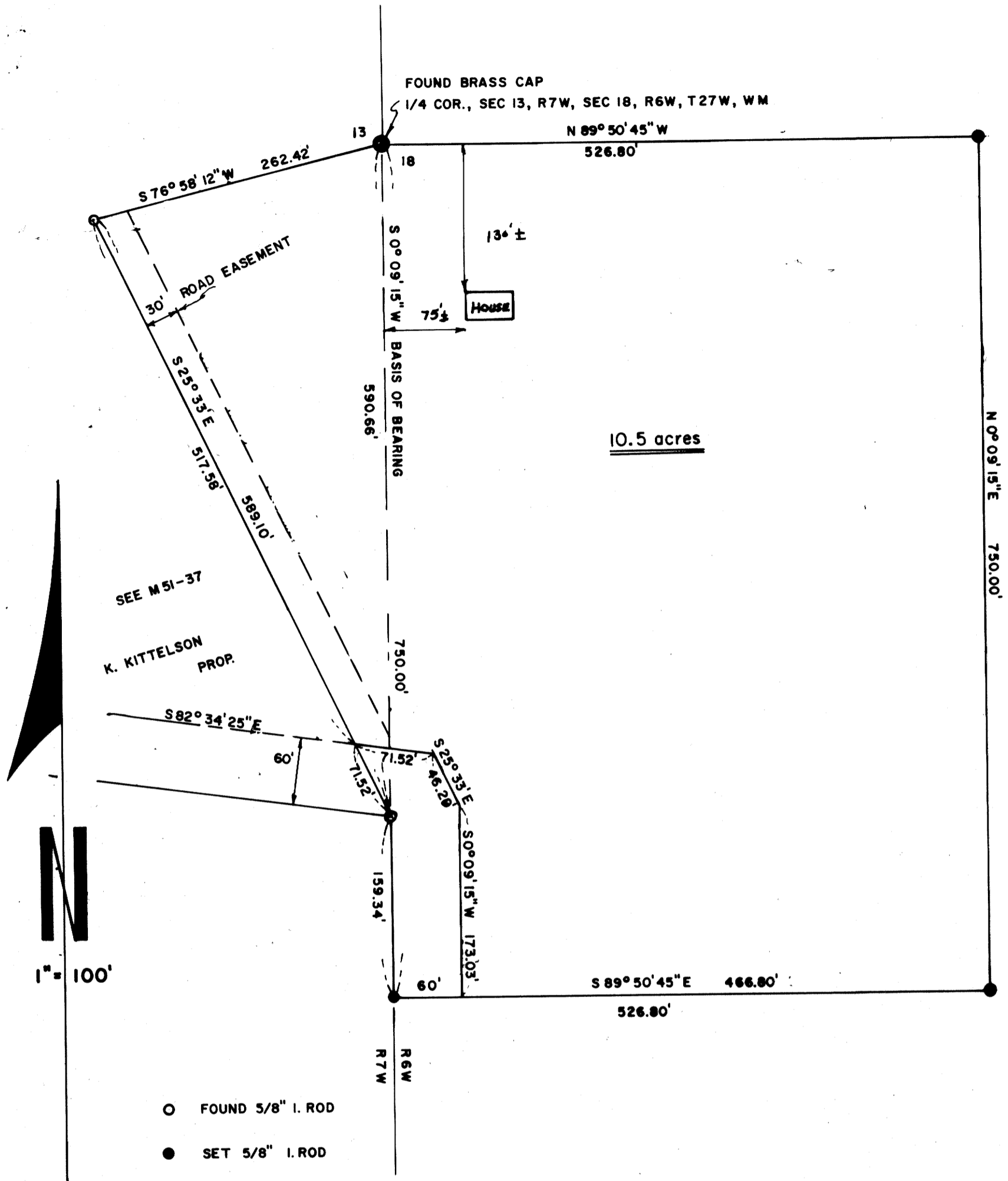


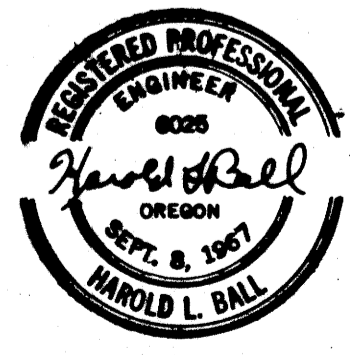
FILED
RECEIVED

NOV 8 1975

COUNTY SURVEYOR
DOUGLAS COUNTY, ORE.



SURVEY IN SEC. 13, T27S, R7W & SEC. 18, T27S, R6W, W.M.
 for CHARLES CHURCH
 by HAROLD BALL - CIVIL ENGINEER
 NOV, 1975



COUNTY SURVEYORS FILE DATA
 DO NOT REMOVE FROM OFFICE