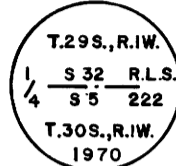


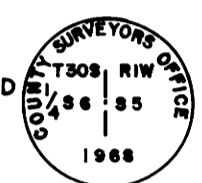
FILED 2
RECEIVED 28
OCT 1975
COUNTY SURVEYOR
DOUGLAS COUNTY, ORE.
2

DESCRIPTION OF MONUMENTS AND ACCESSORY TIES

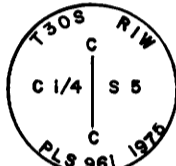
1 FOUND 2" PIPE WITH 2 1/2" BRASS DISK TOP STAMPED:
FROM WHICH: A 8" FIR BEARS N70 1/4°E 36.3' SCRIBED 1/4 S 32 BT
A 6" FIR BEARS S64°W 14.9' SCRIBED 1/4 S 5 BT



2 FOUND 34" FIR STUMP MARKING THE 1/4 SECTION CORNER BETWEEN 6 1/5
FROM WHICH: A 1" PIPE WITH 2 1/2" BRASS DISK TOP, SET 2' NORTH OF CENTER OF STUMP STAMPED
A 11" FIR BEARS S89°E 46.1' SCRIBED 1/4 S 5 CS BT
A 8" FIR BEARS S61°E 32.6' SCRIBED 1/4 S 5 CS BT



3 SET 2" PIPE WITH 3" BRASS DISK TOP STAMPED:
FROM WHICH: A 8" CEDAR BEARS N64°06'E 18.2' SCRIBED C 1/4 S 5 BT
A 9" CEDAR BEARS S63°24'W 62.8' SCRIBED C 1/4 S 5 BT



4 FOUND 1" PIPE WITH 2 1/2" BRASS DISK TOP STAMPED:
FROM WHICH: A 10" HEMLOCK BEARS N 9°W 19.7' SCRIBED 1/4 S 5 CS BT
A 16" FIR BEARS N33°E 37.7' SCRIBED 1/4 S 4 CS BT



5 SET 2" PIPE WITH 3" BRASS DISK TOP STAMPED:
FROM WHICH: A 12" FIR BEARS S75°02'E 55.2' SCRIBED T30S RIW S 1/16 S 5 BT
A 11" FIR BEARS S73°28'W 18.8' SCRIBED T30S RIW S 1/16 S 6 BT



6 SET 2" PIPE WITH 3" BRASS DISK TOP STAMPED:
FROM WHICH: A 24" FIR BEARS N06°30'E 77.0' SCRIBED CS 1/16 S 5 BT
A 6" FIR BEARS N77°59'E 14.4' SCRIBED CS 1/16 S 5 BT



7 FOUND 1" PIPE WITH 2 1/2" BRASS DISK TOP STAMPED:
FROM WHICH: A 22" FIR BEARS N65°E 11.9', SHOWS SCARS
A 10" FIR BEARS S38°E 34.1' SCRIBED T.30S. R.1W. S 8 CS BT
A 20" FIR BEARS S70°W 28.3', SHOWS SCARS
A 18" FIR BEARS N10°W 30.4', SHOWS SCARS



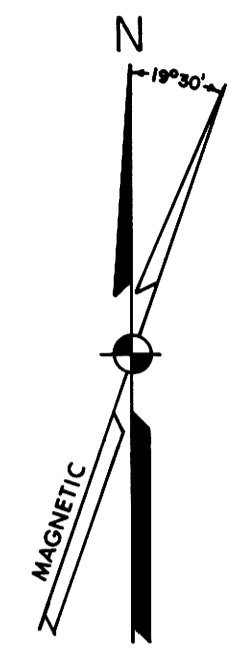
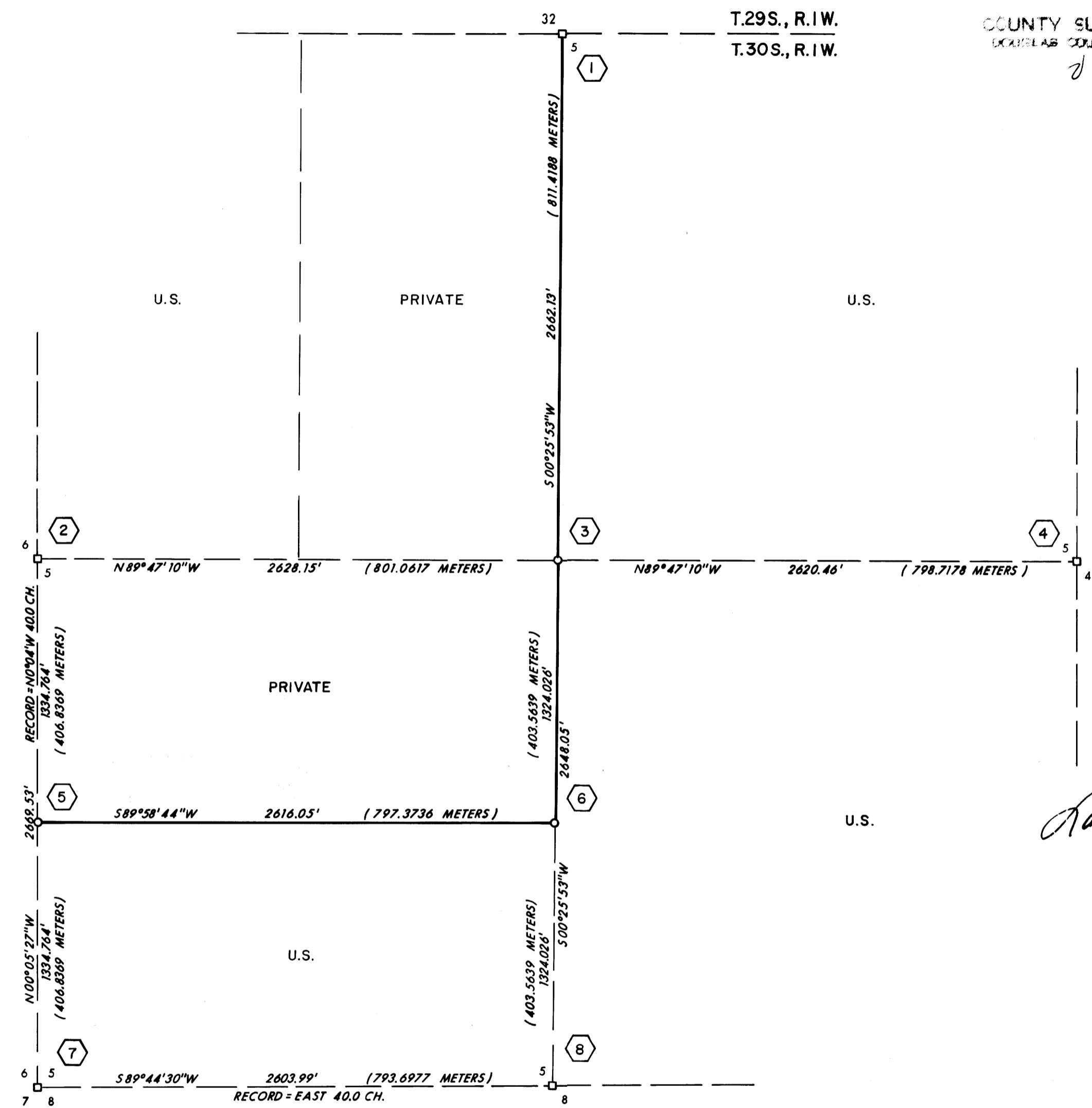
8 FOUND 1" PIPE WITH 2 1/2" BRASS DISK TOP STAMPED:
FROM WHICH: A 10" FIR BEARS N13°E 32.0' HAS BEEN OPENED, NO SCRIBE VISIBLE
A 12" FIR BEARS S88°E 9.4' SCRIBED 1/4 S 8 CS BT
A 42" FIR BEARS S8°W 6.6' SHOWS SCARS
A 12" YEW BEARS N80°W 27.3' SCRIBED 1/4 S 5 CS BT



LEGEND:
□=FOUND MONUMENT AS SHOWN.
○=SET MONUMENT AS SHOWN.
—=TRUE LINE POSTED WITH STEEL FENCE POSTS AND GOVERNMENT PROPERTY SIGNS.
BASIS OF BEARINGS: POLARIS OBSERVATION

I, LARRY J. FRIAR, A REGISTERED LAND SURVEYOR IN THE STATE OF OREGON, HEREBY CERTIFY THAT THIS PLAT AND THE NOTES HEREON ARE A CORRECT REPRESENTATION OF A SURVEY I PERFORMED DURING SEPTEMBER AND OCTOBER, 1975, FOR THE U.S. FOREST SERVICE, IN ACCORDANCE WITH THE STATUTES OF THE STATE OF OREGON AND THE ARTICLES OF MY CONTRACT.

Larry J. Friar
LARRY J. FRIAR
REGISTERED LAND SURVEYOR NO. 961



REGISTERED PROFESSIONAL LAND SURVEYOR
Larry J. Friar
LARRY J. FRIAR
JULY 16, 1971
961

PLAT OF SURVEY
FOR
THE UNITED STATES DEPARTMENT OF AGRICULTURE
UMPQUA NATIONAL FOREST
CONTRACT NO. 004938N
LOCATED IN SECTION 5, T.30S., R.1W., W.M.
DOUGLAS COUNTY SCALE: 1"=500'
OREGON OCTOBER, 1975
TILLER LAND SURVEY NO. 18
PREPARED BY
FRIAR-MOFFIT SURVEYING CO.
MEDFORD, OREGON