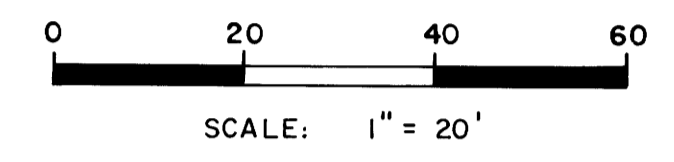


Basis of bearings: Survey by Wm. S Barnes  
 Dec. 1973

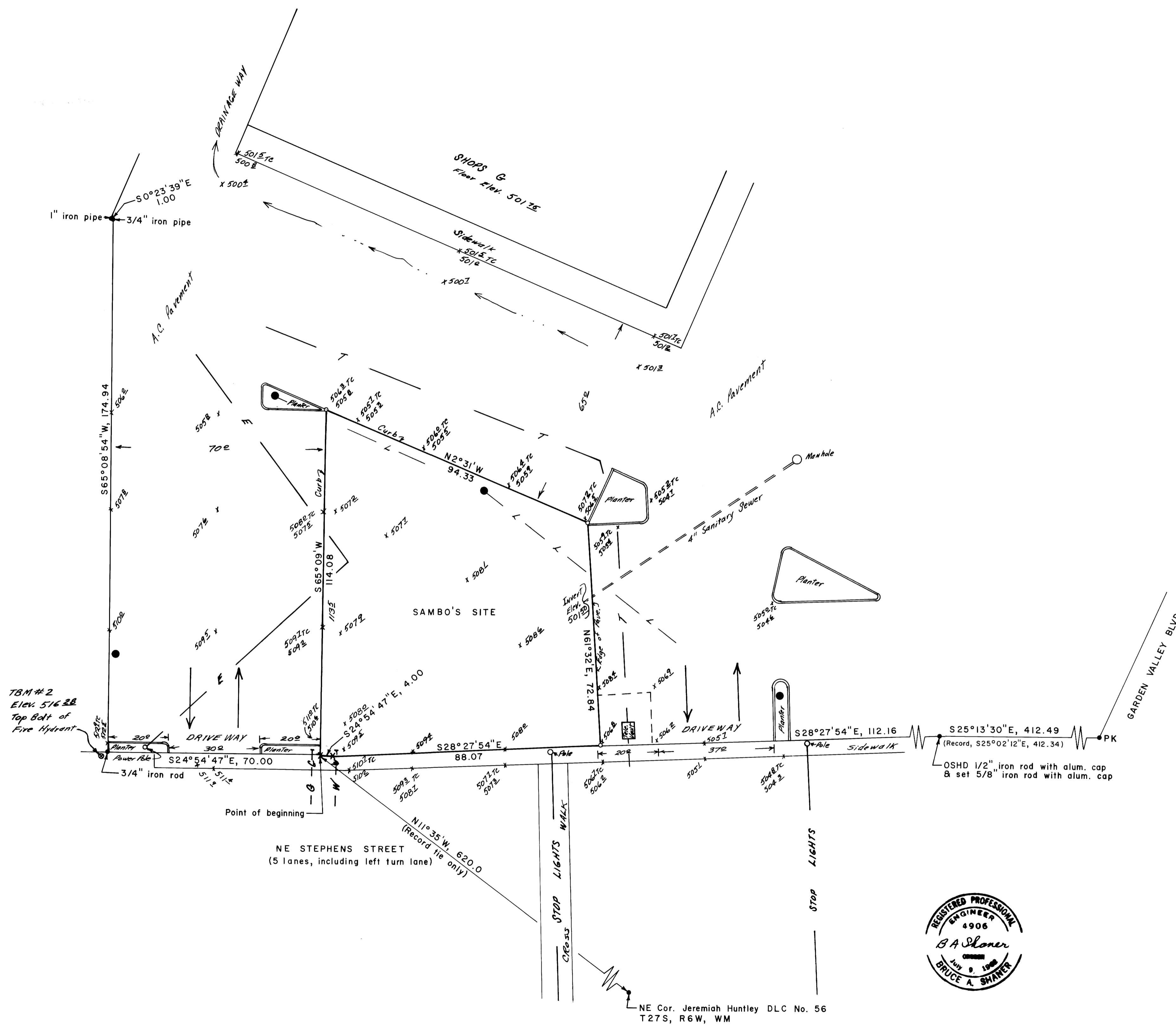


LEGEND

- x "x" in sidewalk
- o Cor. set, 5/8" iron rod with alum. cap
- Cor. found, as noted
- E — Electric Main
- L — Light's Power Line
- T — Telephone Main
- W — W — Water Service
- G — G — Gas Service
- Light Base
- x 501 ETC  
501 E Elev. Top of Curb  
501 E Elev. Bottom of Curb
- — — Property Line

Notes:  
 1. All utility lines on site are buried.  
 2. There are several more buried utilities in area. See "As Builts" prepared for Kaiser Aetna by Shaner Engineering, Inc., dated Jan. 13, 1975.

PROPERTY LINE & TOPOGRAPHIC SURVEY  
 IN JEREMIAH HUNTLEY DLC NO. 56  
 T. 27 S., R. 6 W., W. M. 34-13  
 For: SAMBO'S RESTAURANTS  
 At: Doyle Plaza, Roseburg, Oregon  
 By: Shaner Engineering, Inc., Roseburg, Oregon  
 September 29, 1975



175B-14

COUNTY SURVEYORS FILE DATA  
 DO NOT REMOVE FROM OFFICE