

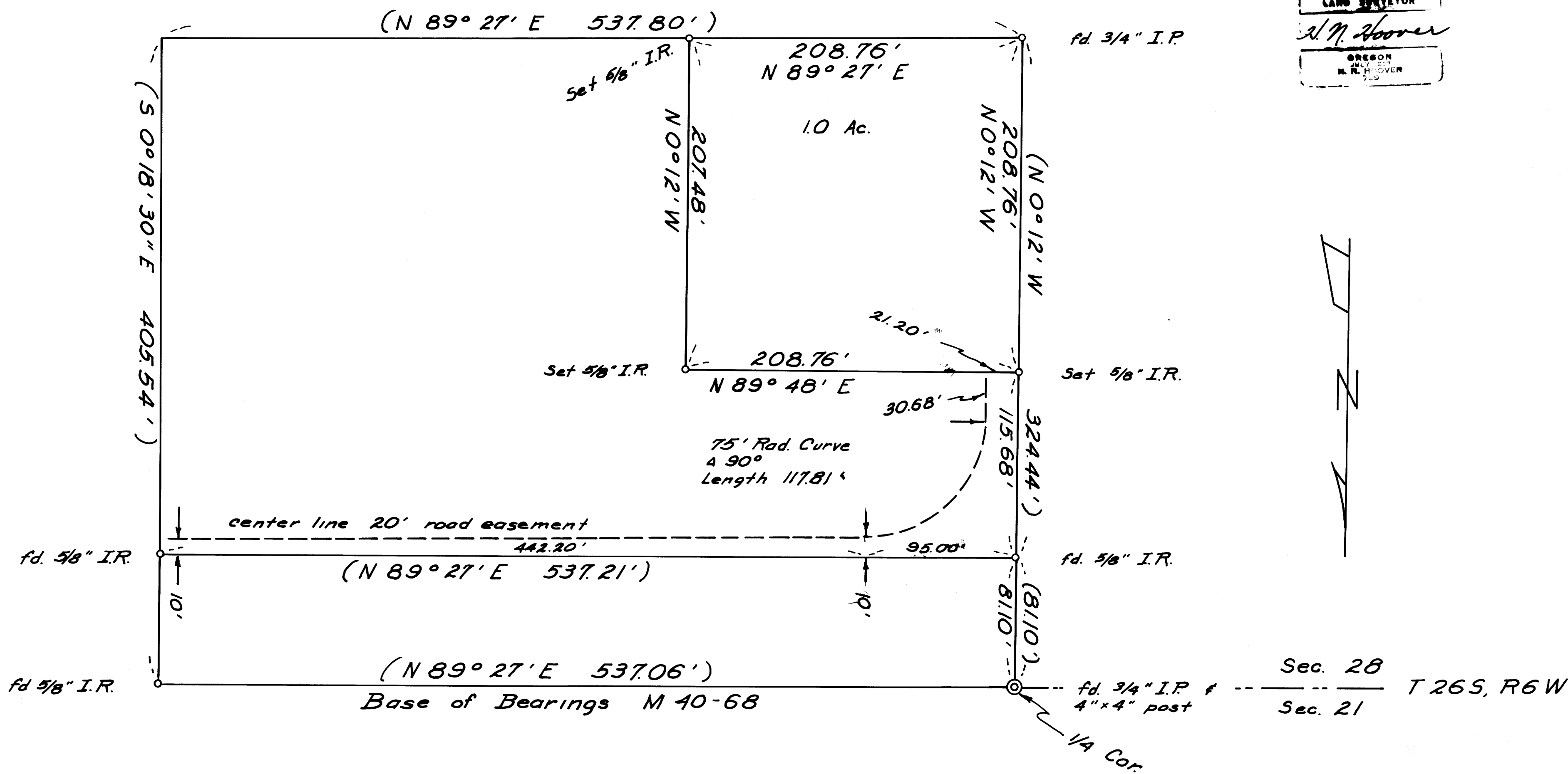
SURVEY for MORTGAGE PURPOSES  
 for DONALD STEVENS  
 in Sec. 28, T 26 S, R 6 W, W.M.  
 Oct. 27, 1975 Scale 1"=50'

COUNTY SURVEYORS FILE DATA  
 DO NOT REMOVE FROM OFFICE

FILED *mg*  
 RECEIVED DS

COUNTY SURVEYOR  
 DOUGLAS COUNTY, ORE.  
*77*

REGISTERED  
 LAND SURVEYOR  
*A. N. Hoover*  
 OREGON  
 JULY 1957  
 N. N. HOOVER  
 739



MAP FILE M 58-35

MAP FILE M 58-35