

33-85/W

SURVEY FOR MORTGAGE PURPOSES
IN SECTION 17, T.22S.R.7W.W.M.
FOR: MRS. CROOK
BY: BAUGHMAN SURVEYING SERVICE

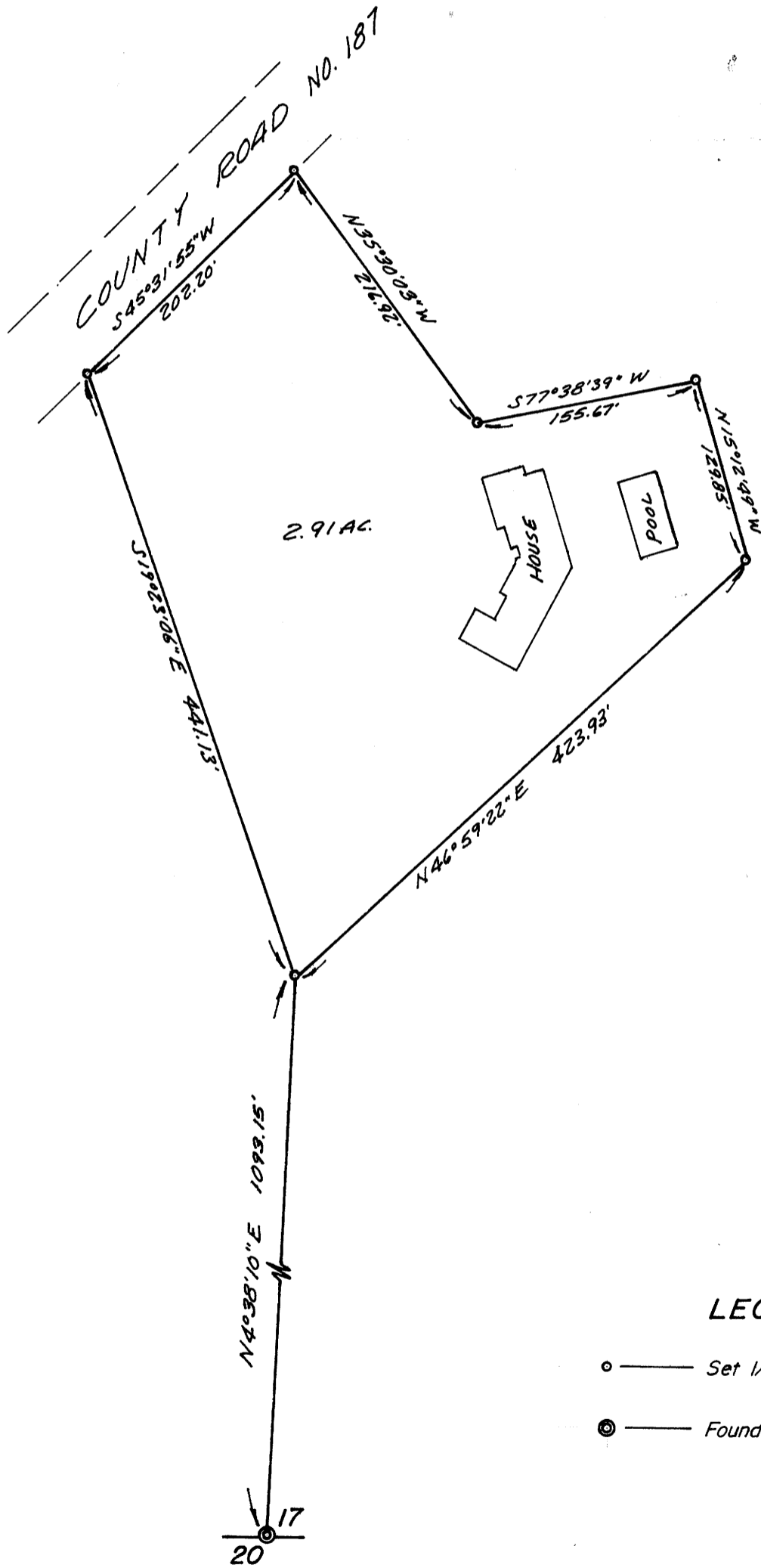
FILED *mg*
 RECEIVED *mg*

COUNTY SURVEYOR
 DOUGLAS COUNTY, ORE.

OCTOBER 1975

SCALE: 1" = 100'

COUNTY SURVEYORS FILE DATA
 DO NOT REMOVE FROM OFFICE



BASED ON SOLAR OBSERVATION

LEGEND

- — Set 1/2" iron rod
- ⊙ — Found "T" iron

REGISTERED
 PROFESSIONAL
 LAND SURVEYOR
Eugene A. Bloom
 OREGON
 MAY 13, 1960
 EUGENE A. BLOOM
 492

35405