

COUNTY SURVEYOR'S FILE DATA
DO NOT REMOVE FROM OFFICE

FILED *2*
RECEIVED *100*

COUNTY SURVEYOR
DOUGLAS COUNTY, ORE.

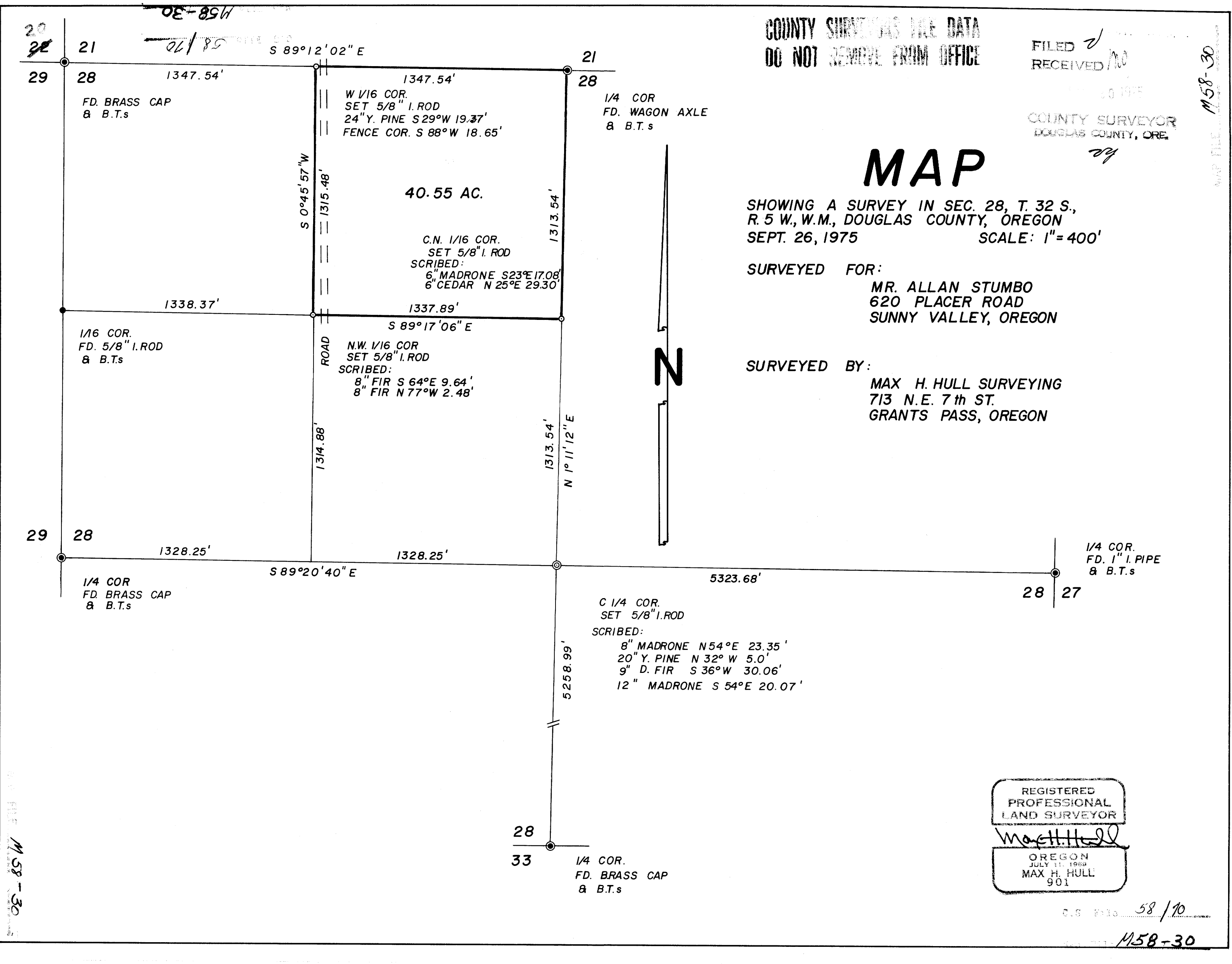
MAP FILE *M58-30*

MAP

SHOWING A SURVEY IN SEC. 28, T. 32 S.,
R. 5 W., W.M., DOUGLAS COUNTY, OREGON
SEPT. 26, 1975 SCALE: 1" = 400'

SURVEYED FOR:
MR. ALLAN STUMBO
620 PLACER ROAD
SUNNY VALLEY, OREGON

SURVEYED BY:
MAX H. HULL SURVEYING
713 N.E. 7th ST.
GRANTS PASS, OREGON





MAX H. HULL Land Surveying

Office 476-2425

713 N. E. 7th Street Grants Pass, Oregon 97526

FILED
RECEIVED

OCT 20 1975

COUNTY SURVEYOR
DOUGLAS COUNTY, ORE.

SURVEY NARRATIVE to comply with Paragraph 209.250, O. R. S.

DATE: September 26, 1975

FOR: Mr. Allan Stumbo
620 Placer Road
Sunny Valley, Oregon

PURPOSE: To survey and mark the boundaries of the Northeast 1/4 of the Northwest 1/4 of Section 28, Township 32 South, Range 5 West, Willamette Meridian, Douglas County, Oregon.

PROCEDURE: Using a Tellurometer CA-1000 and a Wild T2-E Theodolite, I established control on the following corners:

Northwest section corner at which point I found a Brass Cap from which I found

- A Fir 12 ins. diam. North 75° West 45.3 feet
- A Madrone 13 ins. diam. North 66° East 66.2 feet
- A Pine 34 ins. diam. South 55° East 72.1 feet
- A Pine 30 ins. diam. South 29° West 19.7 feet

North 1/4 corner at which point I found a wagon axle from which I found

- A B. Oak 13 ins. diam. North 60° East 78.4 feet
- A W. Oak 9 ins. diam. South 37° West 46.0 feet

East 1/4 corner at which point I found a 1" Iron Pipe from which I found

- A Fir 32 ins. diam. South 85° East 25.7 feet
- A Fir 16 ins. diam. North 68° West 9.8 feet

South 1/4 corner at which I found a Brass Cap from which I found

- A Fir 8 ins. diam. North 70° West 7.1 feet
- A Fir 7 ins. diam. South 46° East 6.1 feet

West 1/4 corner at which point I found a Brass Cap from which I found

- A Fir 12 ins. diam. South 71° West 62 Lks.

North 1/16 corner at which point I found a 5/8" Iron Rod from which I found

- A Madrone 24 ins. diam. North 38° West 24.0 feet
- A Fir 18 ins. diam. North 36° East 24.6 feet

58 / 70 A
158-30

C.V.
P. 1



MAX H. HULL Land Surveying

FILED Office 476,2425
RECEIVED *MH*

OCT 20 1975

713 N. E. 7th Street Grants Pass, Oregon 97526

COUNTY SURVEYOR
DOUGLAS COUNTY, ORE.

I also established control points at approximate 1/16 corners to be set on this survey; thence I computed the subdivision of the Section and the Northwest 1/4; thence I set the 1/16 corners shown on the map and surveyed true line around the Northeast 1/4 of the Northwest 1/4; thence from the Center North 1/16 corner I surveyed South 1°11'12" West 1313.54 feet and set the Center 1/4 corner as shown.

493

Meridian is based on R.S. 705 record survey of the West line of the Northwest 1/4.

REGISTERED
PROFESSIONAL
LAND SURVEYOR

Max H. Hull

OREGON
JULY 11, 1969
MAX H. HULL
901

58/10 b

Map 158-30