

SURVEY FOR DEED DESCRIPTIONS IN S.W. 1/4 of N.W. 1/4 SEC. 5, T32S, R4W, W.M.

Surveyed for Richard G. Wallace by Victor M. McLind

October, 1975

Scale: 1" = 200'

COUNTY SURVEYORS FILE DATA
DO NOT REMOVE FROM OFFICE

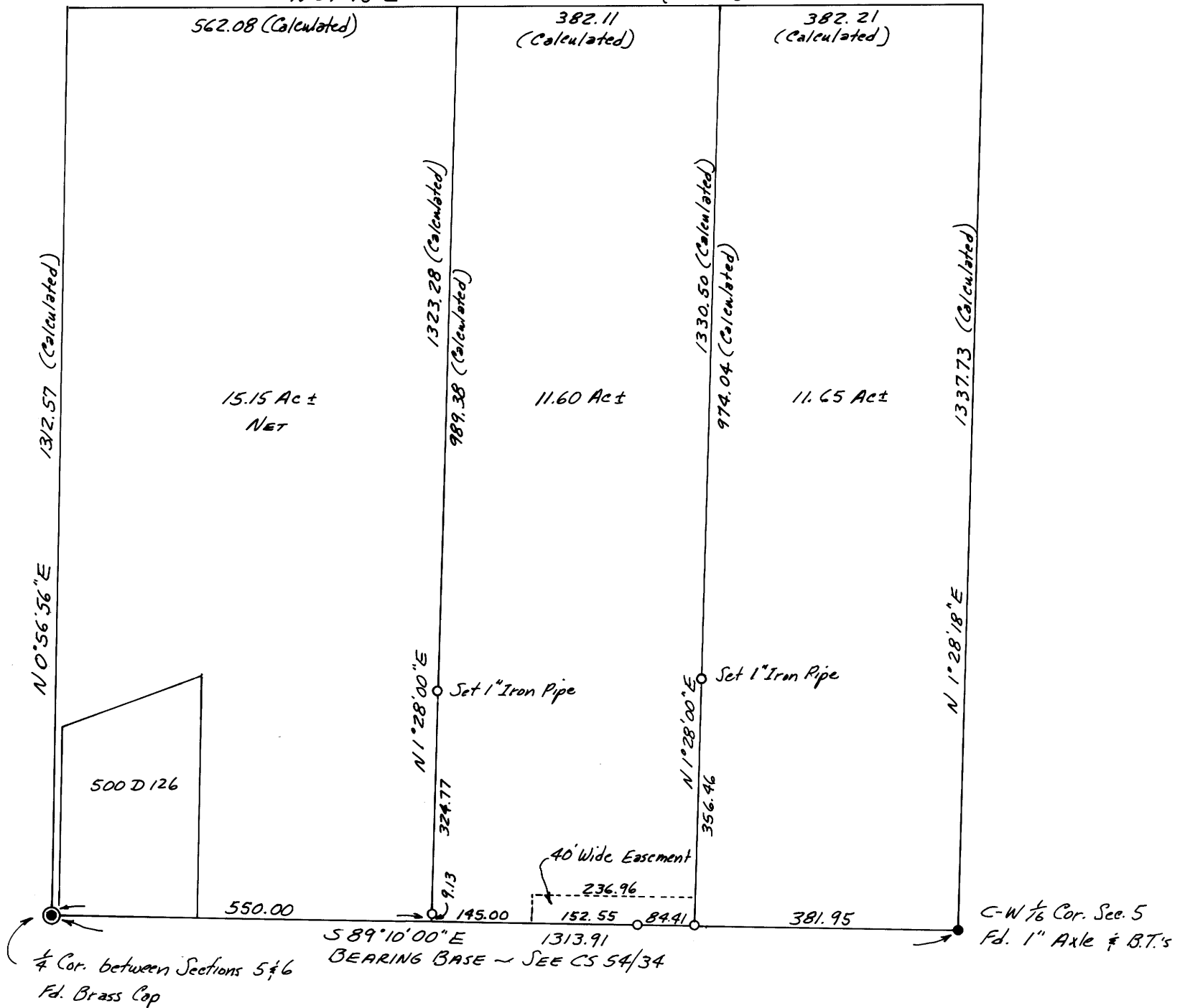
FILED ✓
RECEIVED KC

OCT 16 1975
COUNTY SURVEYOR
CLATSOP COUNTY, ORE.

VM

o ~ Indicates Set 5/8" x 30" Iron Rod unless otherwise noted.

This line not surveyed - Bearing and distance taken from CS 54/34
N 89° 45' E 1326.4 (Record)



Victor M. McLind

MAP FILE M58-28

MAP FILE M58-28