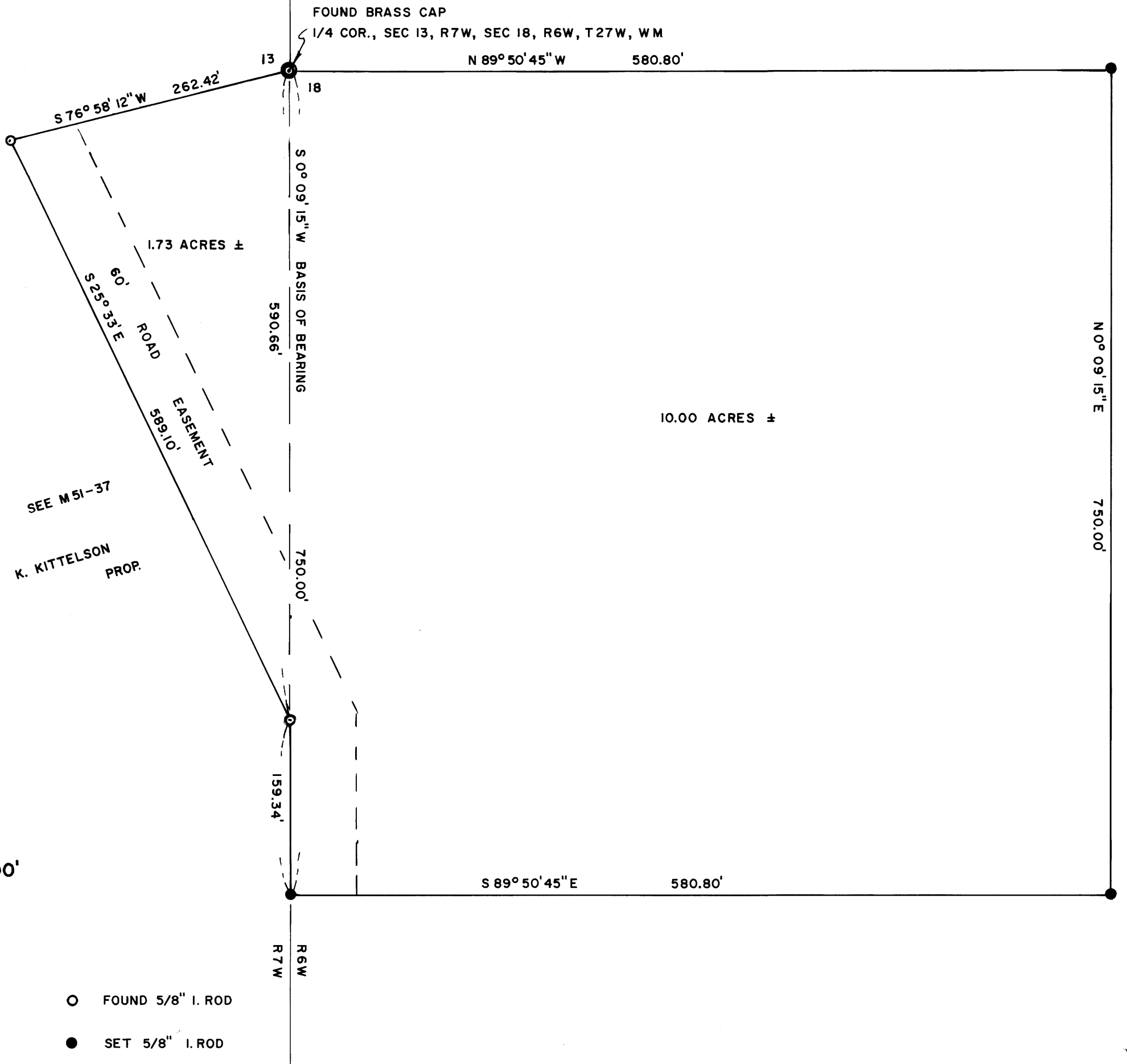


FILED
RECEIVED

1975
COUNTY SURVEYOR
DOUGLAS COUNTY, OREGON



SURVEY IN SEC. 13, T27S, R7W & SEC. 18, T27S, R6W, W.M.

for CHARLES CHURCH

by HAROLD BALL - CIVIL ENGINEER

OCT, 1975

SEE REVISION
M 58-45



COUNTY SURVEYORS FILE DATA
DO NOT REMOVE FROM OFFICE