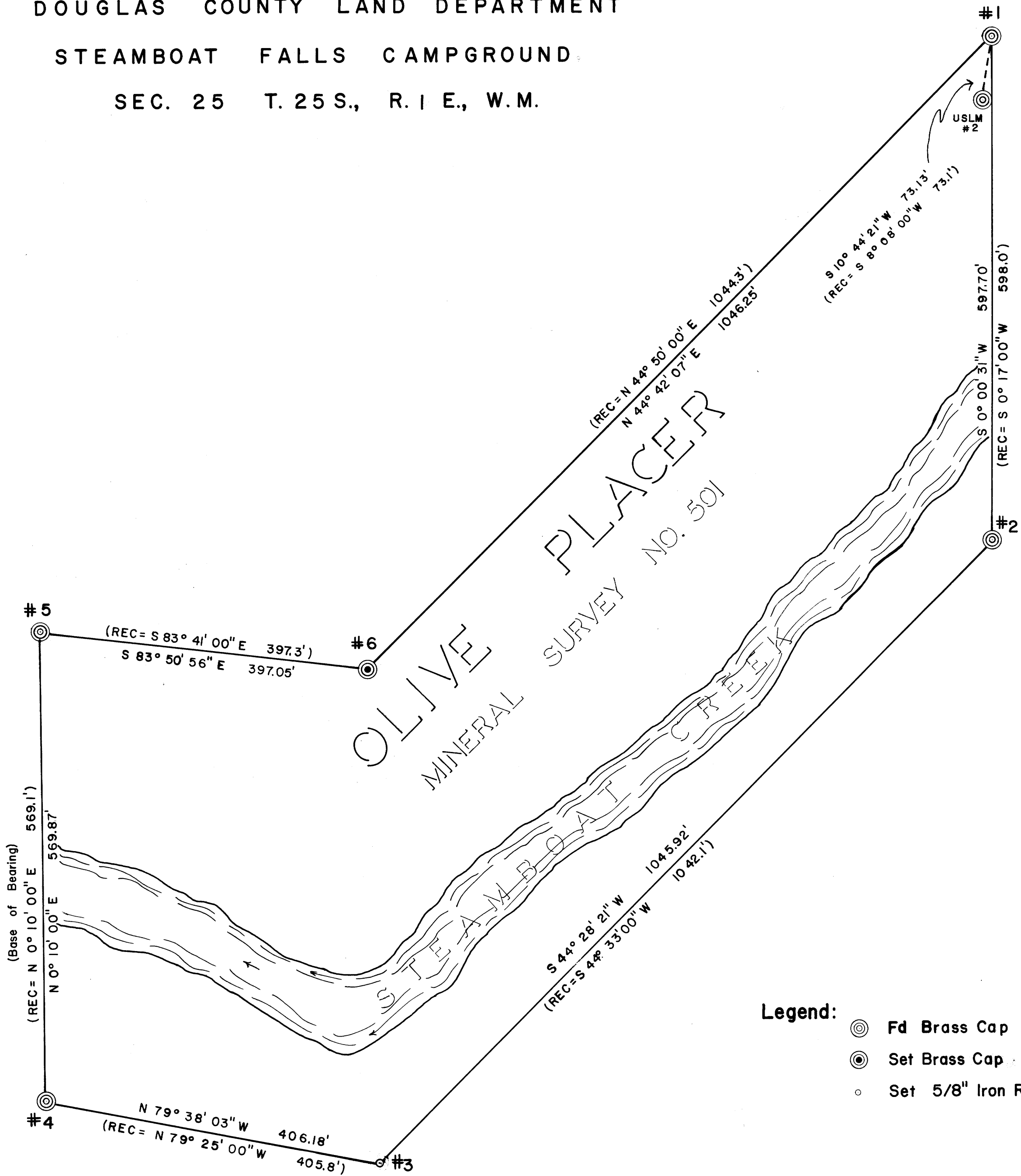


DOUGLAS COUNTY LAND DEPARTMENT
STEAMBOAT FALLS CAMPGROUND
SEC. 25 T. 25 S., R. 1 E., W.M.

FILED *rl*
RECEIVED *rl*
COUNTY SURVEYOR
DOUGLAS COUNTY, ORE.



- Legend:**
- ⊙ Fd Brass Cap
 - ⊙ Set Brass Cap
 - Set 5/8" Iron Rod

REGISTERED
PROFESSIONAL
LAND SURVEYOR
Francis L. Ingram
OREGON
JULY 11, 1969
FRANCIS L. INGRAM
902

Surveyed for Douglas County Land Dept.
Surveyed by Douglas County Surveyor's Office
Francis L. Ingram County Surveyor
Scale: 1" = 100' Sept. 1975

CS FILE FOLDER

CONTAINS

MORE

INFORMATION