

SURVEY TO SET PROPERTY CORNERS IN SECTIONS 19, 20, 29, & 30, T24S, R6W, W.M.

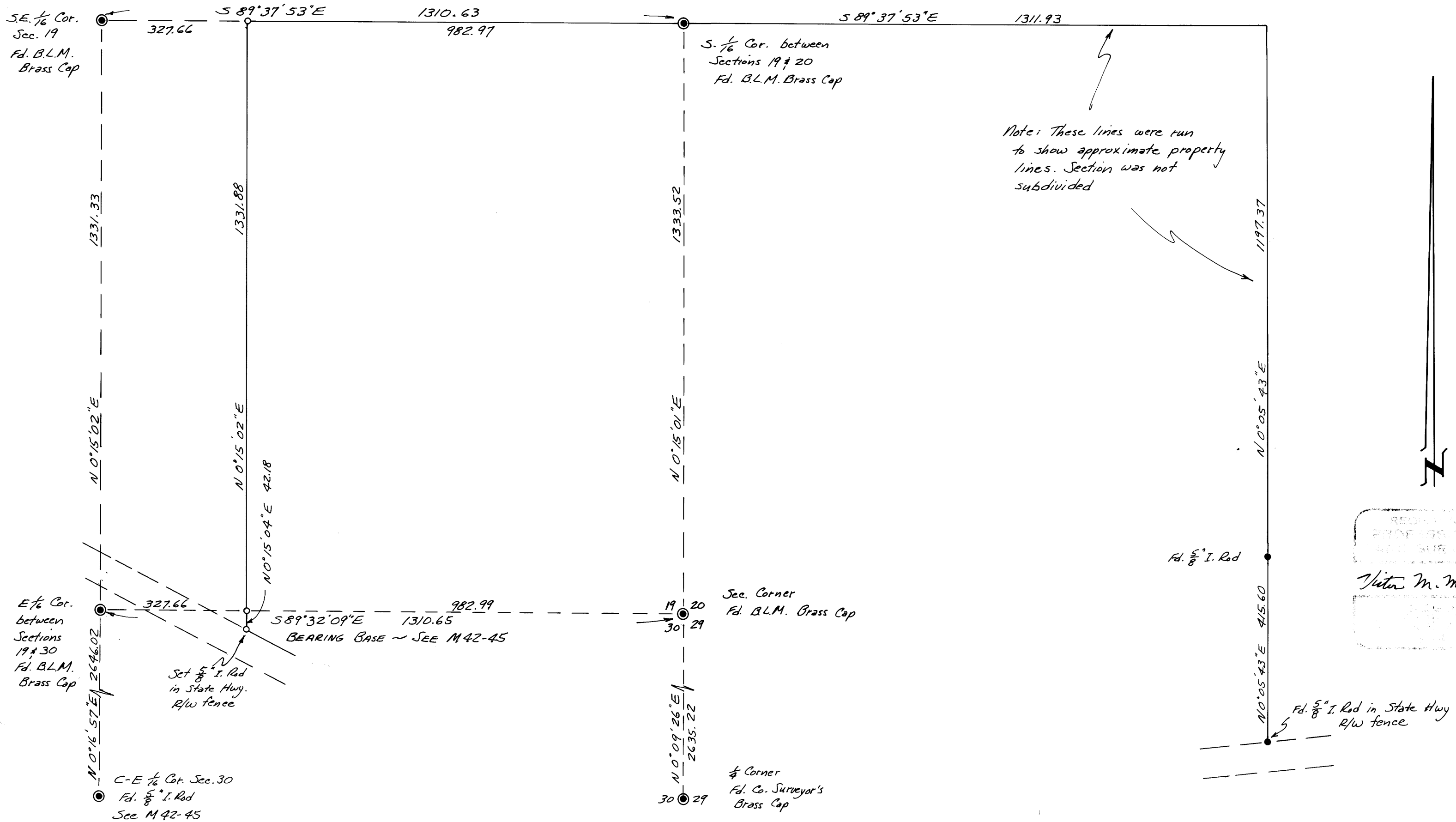
Surveyed for Gene Peck by Victor M. McLind
September 1975

COUNTY SURVEYORS FILE DATA
DO NOT REMOVE FROM OFFICE

Scale: 1" = 200'

FILED ✓
RECEIVED ✓
SEP 16 1975
COUNTY SURVEYOR
DOUGLAS COUNTY, ORE.
✓

○ ~ Indicates Set $\frac{5}{8}$ " x 30" Iron Rod



REDUCED TO
PROFESSIONAL
AND SURVEYOR
Victor M. McLind

M 58 - 10

58 - 10