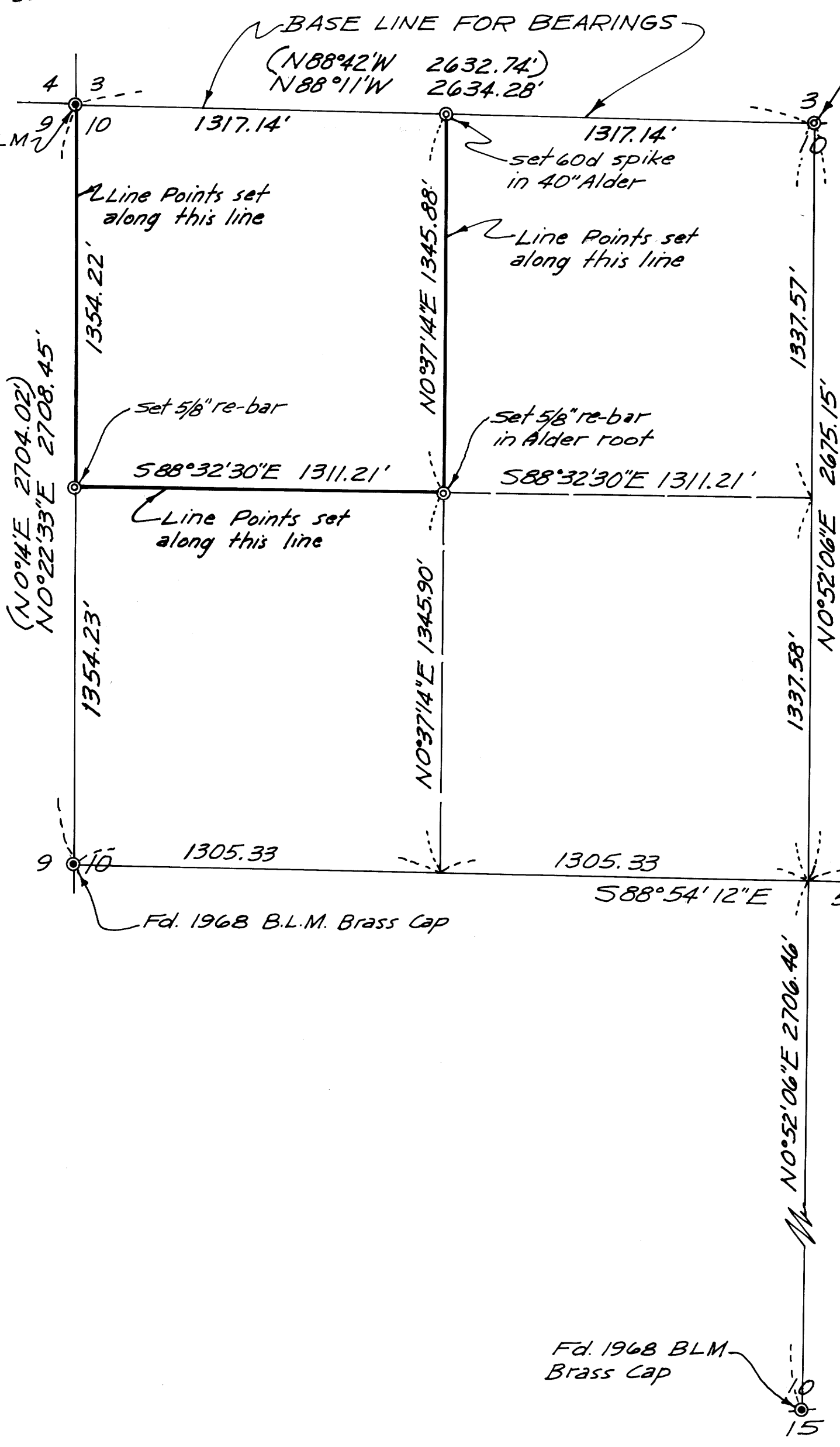


MAP FILE 57-9

Fd. 1958 BLM Brass Cap

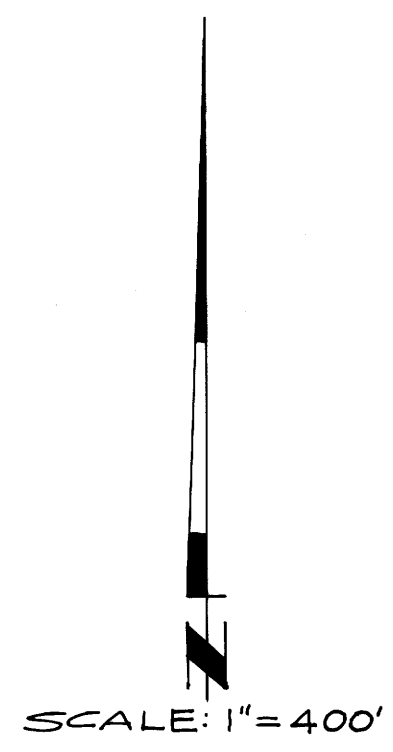


Set 2"x36" galv. iron pipe directly under 18" rotted Fir Tree which shows old marks for corner and is proper distances from bearing trees. (all bearing trees found) NO BLM. BRASS CAP FOUND

FILED
RECEIVED *mg*
MAY 16 1975
COUNTY SURVEYOR
DOUGLAS COUNTY, ORE.

**COUNTY SURVEYORS FILE DATA
DO NOT REMOVE FROM OFFICE**

LEGEND
Monument Set --- (○)
Monument Found --- (○)
Data of record --- ()



Fd. 1958 BLM Brass Cap

Fd. 1968 B.L.M. Brass Cap

Fd. 1968 BLM Brass Cap

SURVEY OF
NW 1/4 - NW 1/4 - SEC. 10 - T. 19S - R. 9W - W.M.
FOR
DAVIDSON INDUSTRIES
by
Stephen H. Ford, Inc.
795 Willamette Street
Eugene, Oregon
Scale: 1" = 400' April, 1975

REGISTERED
PROFESSIONAL
LAND SURVEYOR

S. Kendrick Ford

OREGON
JUL 23 1954
S. KENDRICK FORD
642

Job No. 2207 *K.H.*

MAP FILE 57-9

MAP FILE 157-9