

COUNTY SURVEYORS FILE DATA
DO NOT REMOVE FROM OFFICE

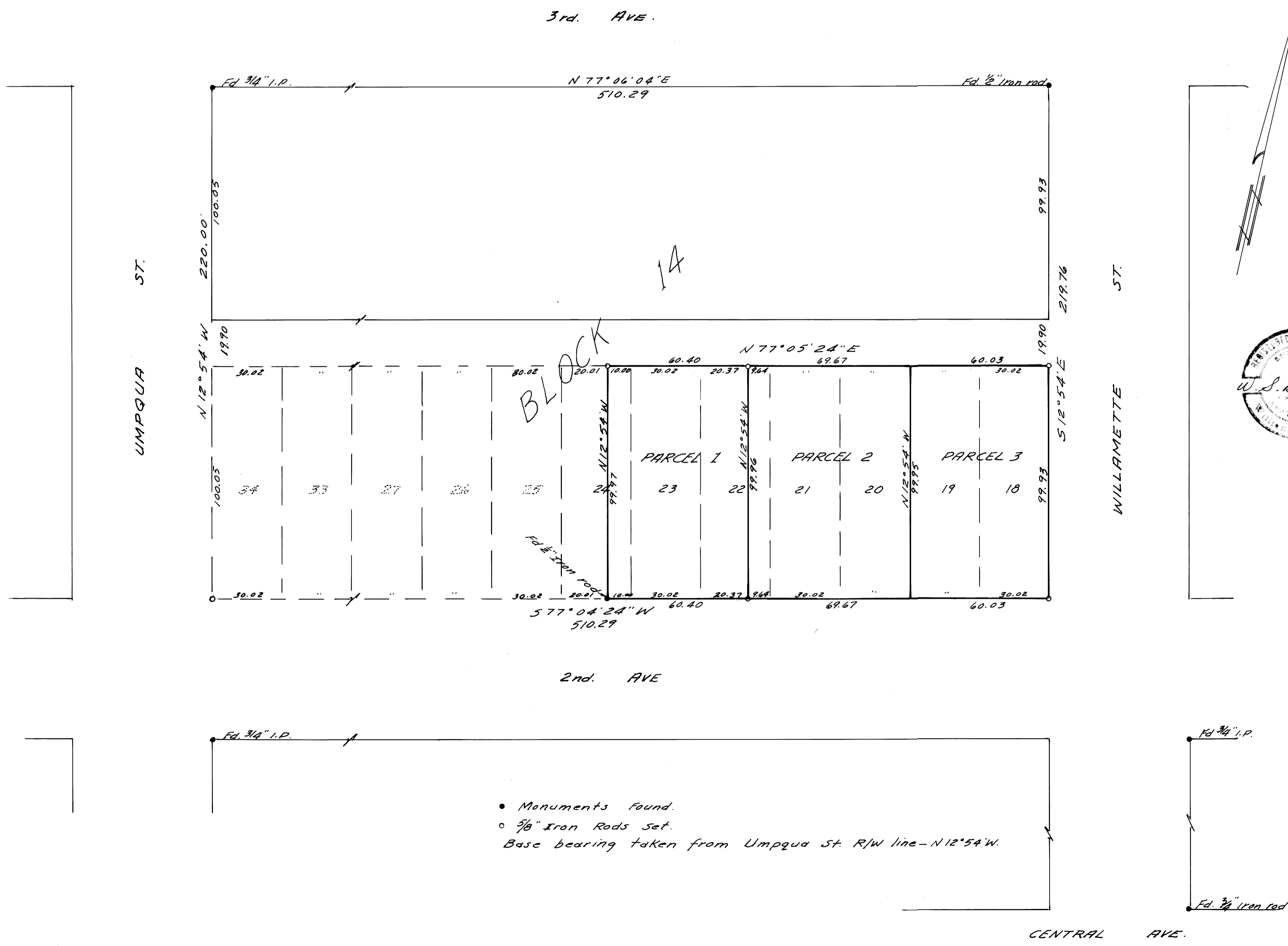
SURVEY IN BLOCK 14 IN AMENDED PLAT OF TOWNSITE OF SUTHERLIN
SEC. 17, T 25 S, R 5 W. W. M.

SURVEYED FOR - JOHN MURPHY
SURVEYED BY - W. S. BARNES

AUGUST 1975
SCALE 1" = 40'

FILED
RECEIVED
AUG 28 1975
COUNTY SURVEYOR
DOUGLAS COUNTY, ORE.

MAP 157 - 79



• Monuments Found.
○ 3/8" Iron Rods Set.
Base bearing taken from Umpqua St. R/W line - N 12° 54' W.

MAP FILE M57 - 79