

COUNTY SURVEYORS FILE DATA
DO NOT REMOVE FROM OFFICE

T.26S. R.3W.W.M.
T.27S. R.3W.W.M.

34 35
3 2

SOUTH 643.80'

EAST 272.68'

SURVEY TO MONUMENT A DESCRIPTION IN SECTION 2, T.27S. R.3W.W.M.

FOR: ROY HANSEN
BY: THOMAS E. SHRUM, JR.

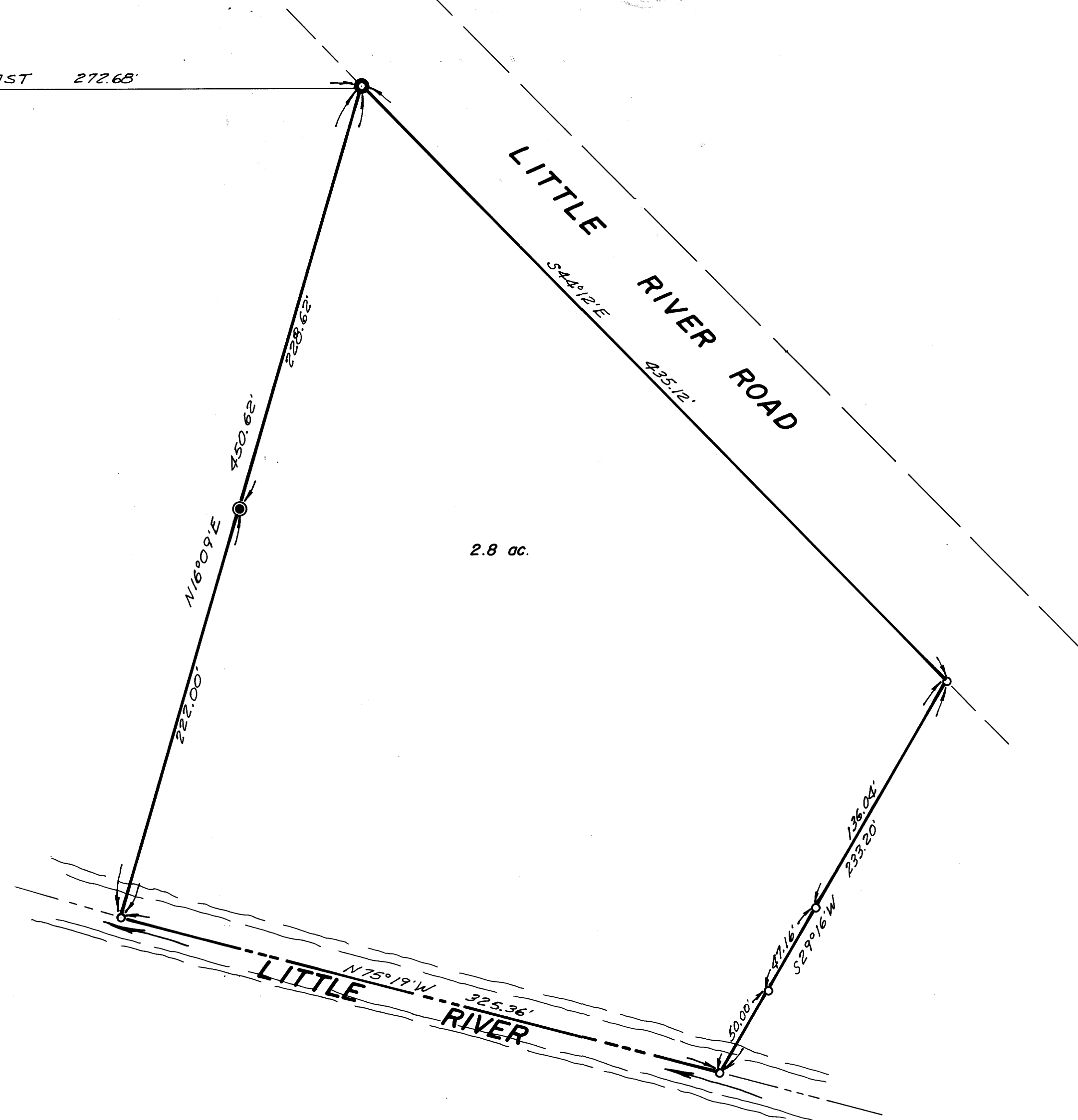
JULY 1975 SCALE: 1"=50'



FILED
RECEIVED

AUG 28 1975

COUNTY SURVEYOR
DOUGLAS COUNTY, ORE.



LEGEND

- — Set 5/8" iron rod
- — Found 5/8" iron rod
- ⊙ — Section corner
- — Point not set
- ⦿ — Set R.R. spike