

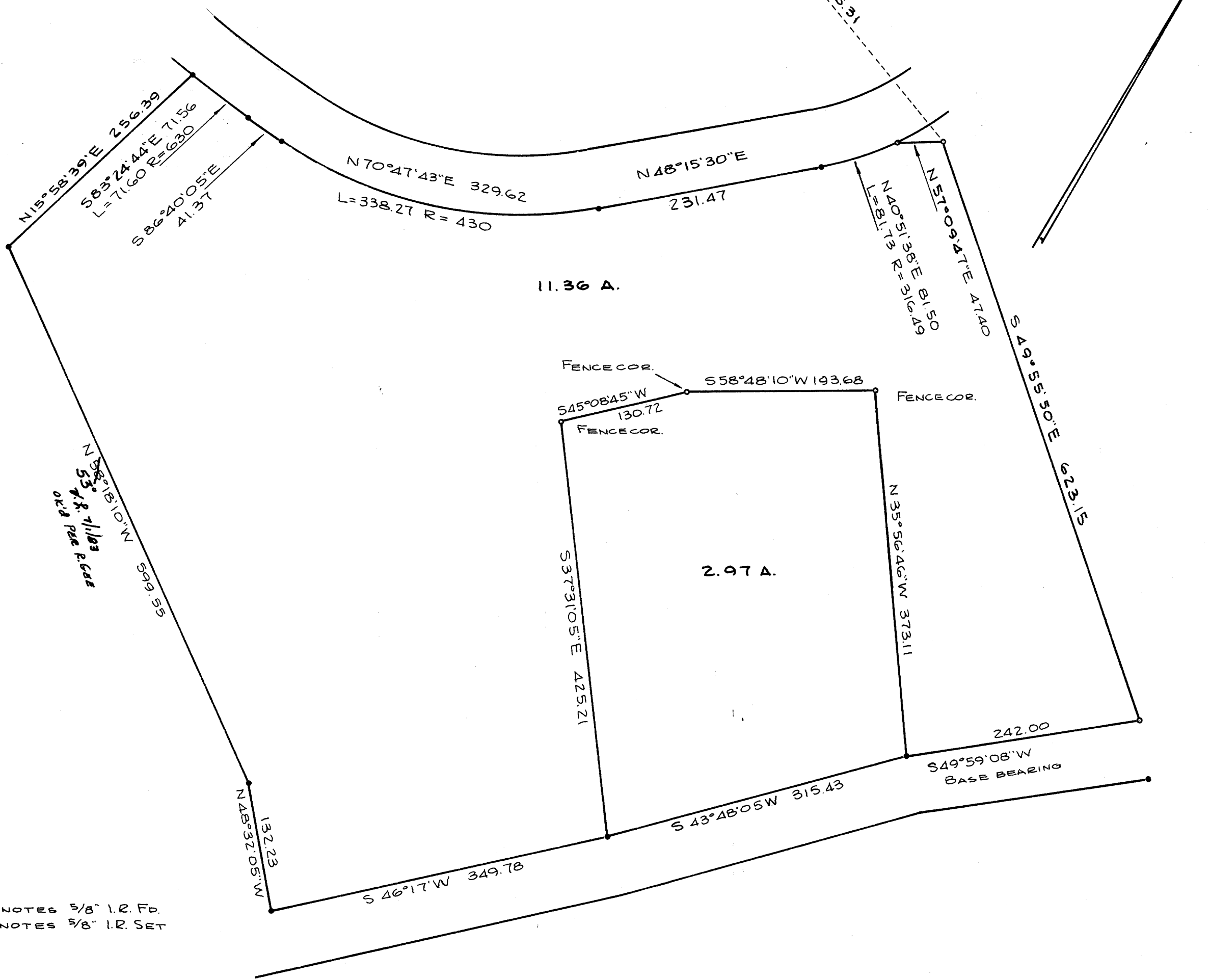
COUNTY SURVEYORS FILE DATA  
DO NOT REMOVE FROM OFFICE

SURVEY IN SECTION 13, T. 26 S., R. 7 W., W. M.  
SURVEYED FOR RIVER BEND WEST, INC.  
SURVEYED BY R. H. GEE AUGUST, 1975  
SCALE 1" = 100'

T. 26 S., R. 7 W., W. M.  
BRASS CAP

FILED  
RECEIVED  
AUG 25 1975  
COUNTY SURVEYOR  
DOUGLAS COUNTY, ORE

MAP FILE M. 57-27



- DENOTES 3/8" I.R. FP.
- DENOTES 5/8" I.R. SET



MAP FILE M. 57-27