

# Survey For Gordon McDowell

Sec. 20, T.29S. R.7W., W.M., Oregon  
August 1975

COUNTY SURVEYORS FILE DATA  
DO NOT REMOVE FROM OFFICE

FILED *✓*  
RECEIVED *KW*

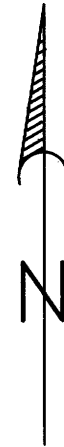
AUG 26 1975

COUNTY SURVEYOR  
DOUGLAS COUNTY, ORE.

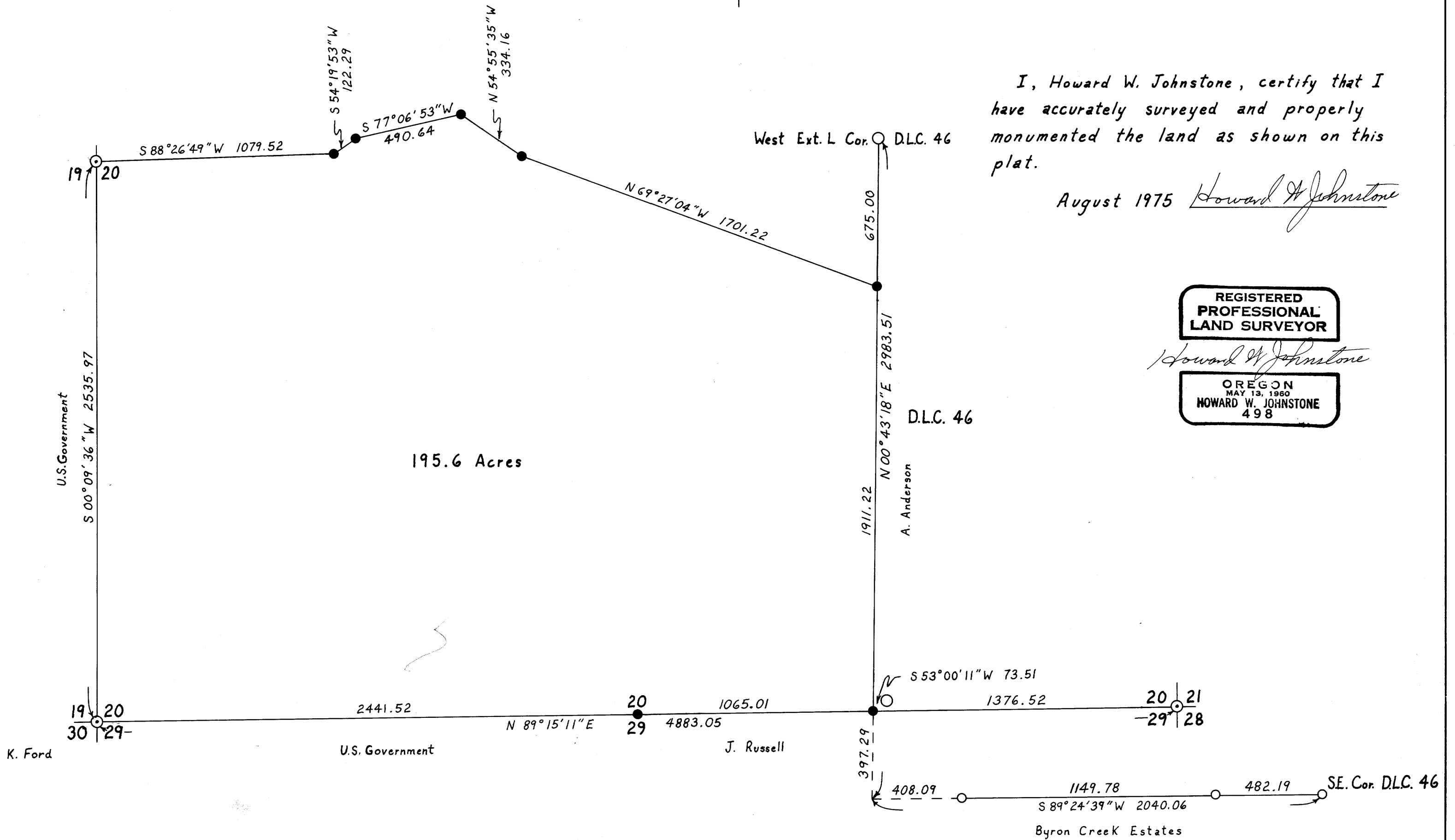
*✓*

## LEGEND

- — Set 5/8" Iron Rod, Aluminum Cap
- — Found 5/8" Iron Rod
- ⊙ — Found Brass Cap
- — Found 2" Iron Pipe



Bearings based on Byron Creek Estates Plat  
See Douglas County Surveyor's File RM-2-35



I, Howard W. Johnstone, certify that I have accurately surveyed and properly monumented the land as shown on this plat.

August 1975 *Howard W. Johnstone*

REGISTERED  
PROFESSIONAL  
LAND SURVEYOR

*Howard W. Johnstone*

OREGON  
MAY 13, 1960  
HOWARD W. JOHNSTONE  
498

MAP FILE M.57-78

MAP FILE M.57-78