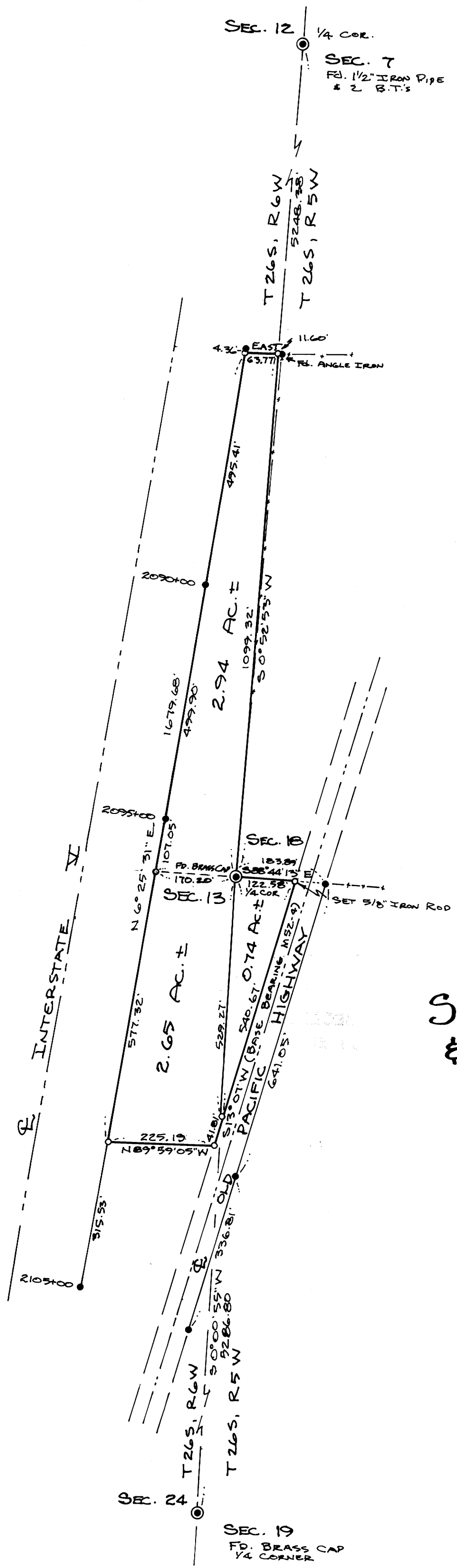


FILED
RECEIVED M.G.

AUG 21 1975

COUNTY SURVEYOR
DOUGLAS COUNTY, ORE.



REGISTERED
PROFESSIONAL
LAND SURVEYOR

Romano E. Ware

OREGON
NOV. 16, 1973
ROMANSO E. WARE
1005



SCALE: 1" = 200'

**SURVEY IN SECTION 13, T26S, R6W,
& SECTION 18, T26S, R5W, W.M.**

FOR GENE WHITAKER
BY BHW ENG. & SURVEYING, INC.
AUGUST, 1975

- — SET 3/4" IRON PIPE UNLESS OTHERWISE NOTED.
- — FD. 5/8" IRON ROD UNLESS OTHERWISE NOTED.

NOTE: FOR RECORD SURVEYS SEE MAPS
M 52-4 AND C.S. 45/263 AS RECORDED
IN COUNTY SURVEYOR'S OFFICE.

**COUNTY SURVEYORS FILE DATA
DO NOT REMOVE FROM OFFICE**