

SECT. 24, T. 22 S., R. 5 W. W. M.

Aug. 15, 1975

Scale 1" = 400'

Jim Whipple

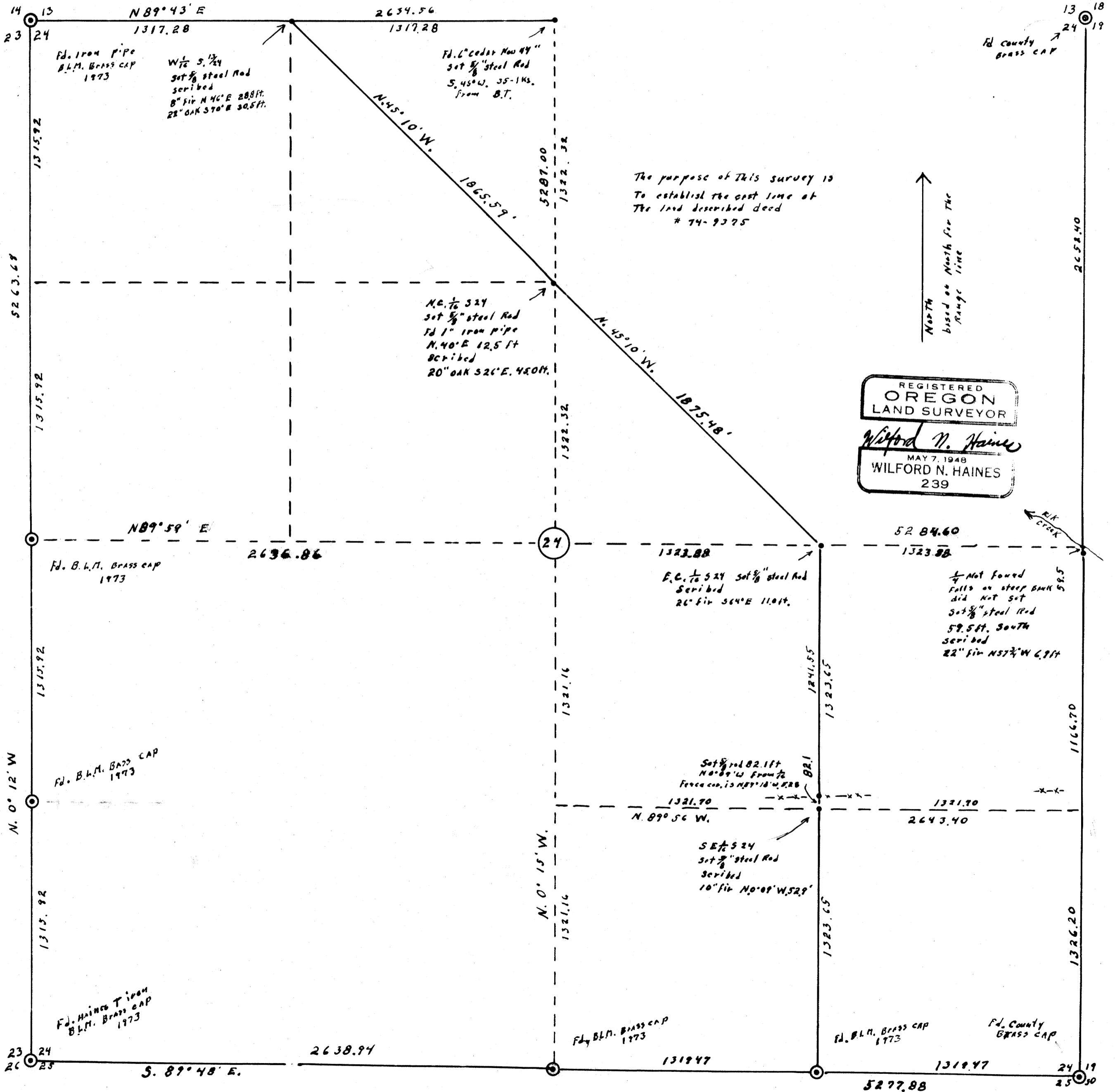
for

Drain, Oregon

FILED RECEIVED

AUG 19 1975

COUNTY SURVEYOR DOUGLAS COUNTY, ORE



REGISTERED  
**OREGON**  
 LAND SURVEYOR  
*Wilford N. Haines*  
 MAY 7, 1948  
**WILFORD N. HAINES**  
 239