

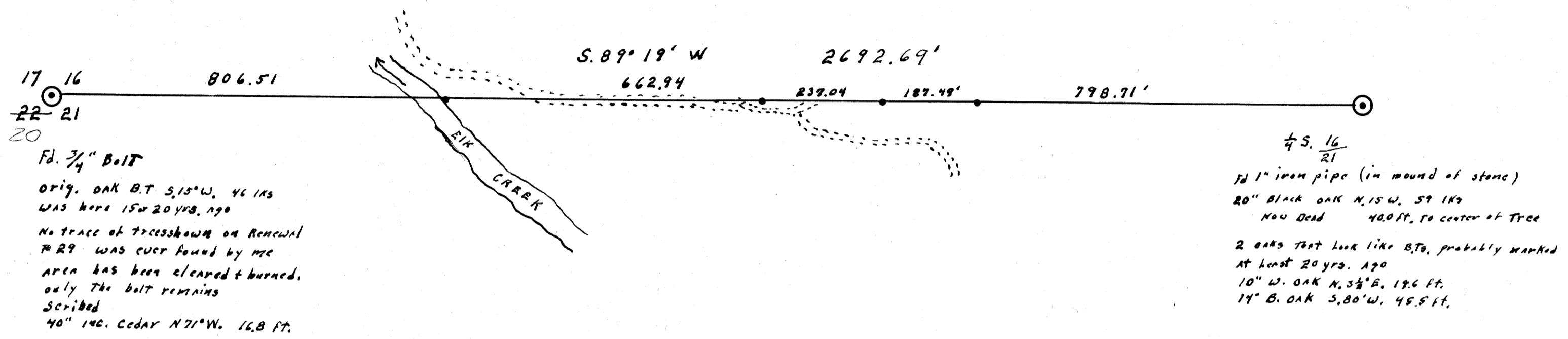
MAP FILE M-52-66

FILED
RECEIVED

AUG 11 1975

COUNTY SURVEYOR
DOUGLAS COUNTY, ORE.

✓



Fd. 3/4" Bolt
 Orig. OAK B.T. S. 15° W. 46 IN
 WAS HERE 15 or 20 YRS. AGO
 No trace of trees shown on Renewal
 R 29 WAS EVER FOUND BY ME
 AREA HAS BEEN CLEARED & BURNED.
 ONLY THE BOLT REMAINS
 SCRIBED
 40" 140. CEDAR N 71° W. 16.8 FT.

1/4 S. 16
 21
 Fd 1" iron pipe (in mound of stone)
 20" Black OAK N. 15° W. 59 IN
 NOW DEAD 40.0 FT. TO CENTER OF TREE
 2 OAKS THAT LOOK LIKE B.Ts, PROBABLY MARKED
 AT LEAST 20 YRS. AGO
 10" W. OAK N. 3 1/2° E. 19.6 FT.
 17" B. OAK S. 80° W. 45.5 FT.

W 1/2 LINE SECTS. 16+21 T. 22 S. R. 5 W. W. M.
 for
 Field & Stream Real Estate inc. Springfield, Oregon.

Scale 1" = 200 ft.

August 6, 1975

North
 BASED ON S 89° 19' W
 FOR THE ORIG SURVEY
 OF THE SECTION LINE

• set 5/8 rebar on line

REGISTERED
 OREGON
 LAND SURVEYOR
 Wilford N. Haines
 MAY 7, 1948
 WILFORD N. HAINES
 239

FILED
 AUGUST 11 1975
 COUNTY SURVEYOR
 DOUGLAS COUNTY, OREGON

MAP FILE M-52-66