

COUNTY SURVEYORS FILE DATA
DO NOT REMOVE FROM OFFICE

SURVEY IN LOT 4, BLOCK 3, PLAT J,
SUTHERLIN LAND AND WATER CO.
CITY OF SUTHERLIN, OREGON
SEC. 17, T25S, R5W, W.M.
SURVEYED FOR BERNARD W. BEVER
BY W.S. BARNES, ENG. SERVICE
JULY, 1975

FILED ✓
RECEIVED ✓

AUG 8 1975

COUNTY SURVEYOR
DOUGLAS COUNTY, ORE.



SCALE 1 IN. = 100 FT.
● FOUND 3/4" I. PIPES
○ SET 5/8" I. RODS

INITIAL POINT
Fd. 2" I. PIPE

BASE OF BEARING

N. 89° 49' E.

Fd 2" I. PIPE

150 00

150 15

150 11

150 03

150 20

149 91

100 30

ORIGINAL PLAT OF 1911
CALLS FOR 2" GALV.
IRON PIPE AS
S.E. COR. OF S.E. 1/4 OF
N.W. 1/4 OF Sec. 17

LOT 8

LOT 7

LOT 6

LOT 5

LOT 4

N. 0° 29' W.
#20 19

Fd. 3/4" I. Rod

N. 78° 21' E.
9 50 FT.

S. 49° 08' E.
55 10

S. 65° 48' E.
82 20

N. 84° 35' E.
25 00

N. 0° 26' 45" W.

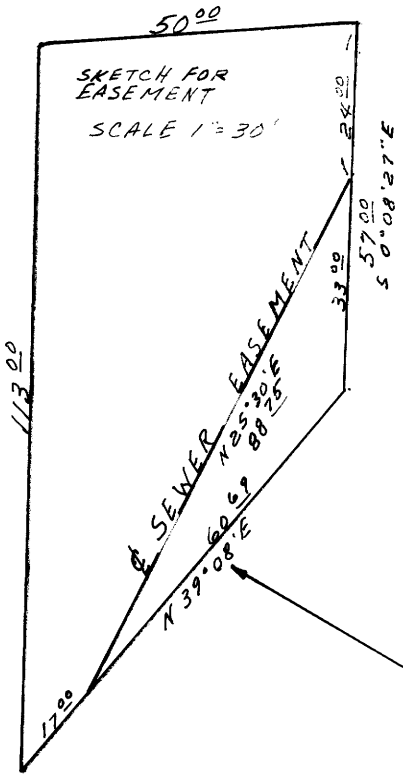
N. 0° 28' 10" W.

577 03

448 19

18 A

Fd. BOLT AT FENCE COR.



600 21 FT.

N. 85° 06' 46" E.
50 00

N. 79° 08' E.
157 32

57 24

113 00

77 63

67 74

W. S. Barnes