

Subdivision SECTION 9, T.22S., R.11W., W.M.

Douglas County, Oregon

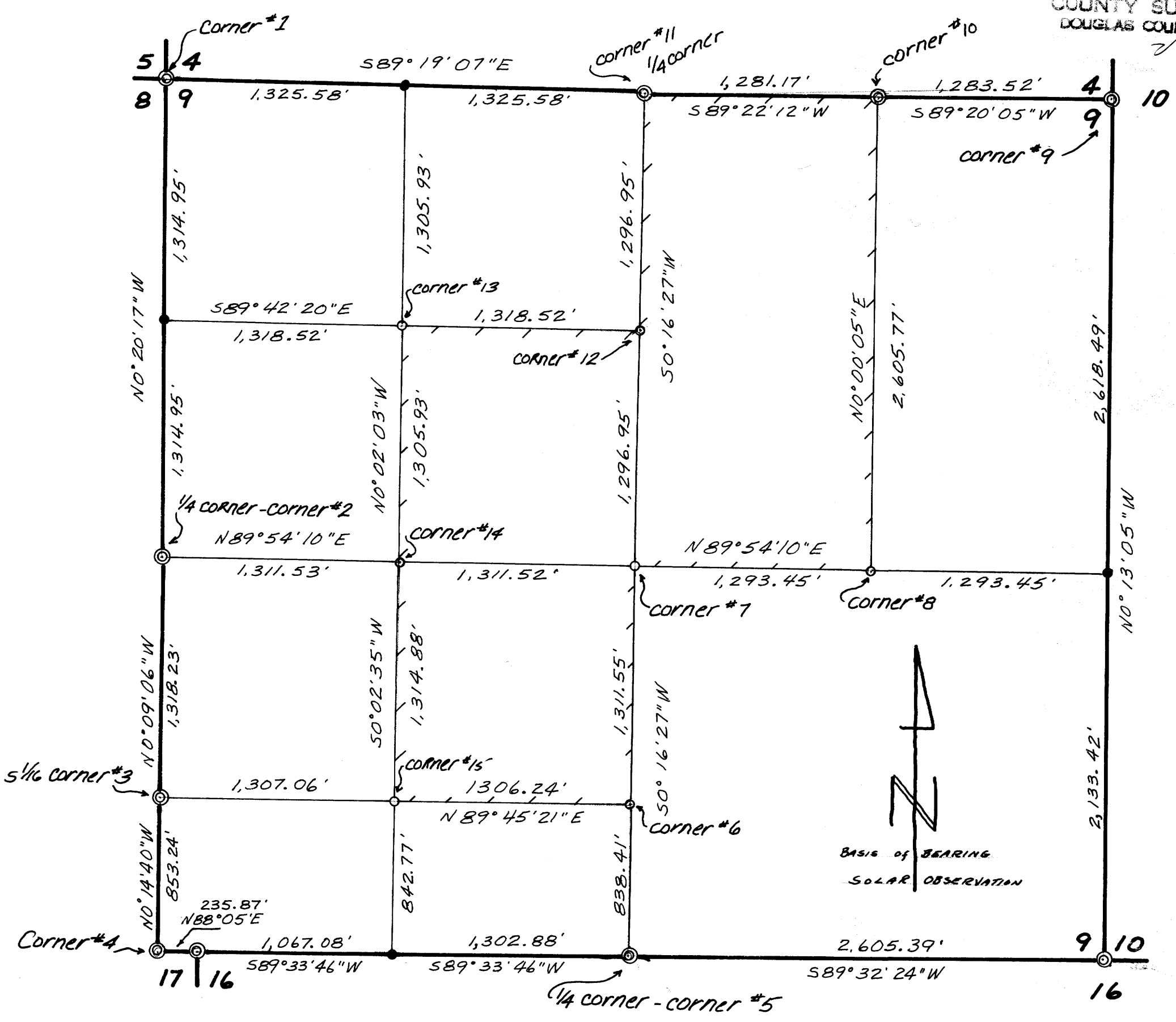
June 20, 1975

COUNTY SURVEYORS FILE
DO NOT REMOVE FROM OFFICE

Scale 1" = 600'

FILED
RECEIVED
JUL 24 1975

COUNTY SURVEYOR
DOUGLAS COUNTY, ORE.



Corner NOTES:

Corners #1 thru #3 - I found these corners, as per county records, all having O.S.B.F. Plc with W.P.C.P. and said B.T.'s

Corner #4 - I found section corner; 1" I.P. with 1 remaining B.T. STUMP, as per county records.

Corner #5 - I found 1/4 corner, D.S.B.F. Plc and 2 B.T.'s, as per notes obtained from D.S.B.F.

Corner #6 - I set 1/2" I.P. at C.S. 1/16, from which I scribed: 26" D.FIR. N41°W 9³/₄ Ft.; 12" ALDER N28°E 37³/₄ Ft.

Corner #7 - I set 1/2" I.P. at C 1/4, from which I scribed: 30" W.R. CEDAR S38°E 85⁵/₄ Ft.; 48" D.FIR N82°E 36³/₄ Ft.

Corner #8 - I set 1/2" I.P. at CE 1/16, from which I scribed: 22" D.FIR S80°W 29³/₄ Ft.; 12" D.FIR S22°W 19³/₄ Ft. (Also constructed rock mound 3'x2'x2')

Corners #9 thru #11 - I found these corners as per county records, all having O.S.B.F. Plc with W.P.C.P. and said B.T.'s

Corner #12 - I set 1/2" I.P. at the CN 1/16, from which I scribed: 22" D.FIR N70°E 49³/₄ Ft.; 39" D.FIR S17°W 38³/₄ Ft.

Corner #13 - I set 1/2" I.P. at the NW 1/16, from which I scribed: 18" W.R. CEDAR S12°W 24³/₄ Ft. 14" W.R. CEDAR S79°E 7³/₄ Ft. (with rock mound 3' Sq Post.)

Corner #14 - I set 1/2" I.P. at the CW 1/16, from which I scribed: 21" D.FIR STUMP N43³/₄°E 16³/₄ Ft.

Survey For: Moore Mill & Lumber Co.
Bandon, Ore.

Survey By:
R.E. Stuntzner
Coos Bay, Ore.



Corner #15 - I set 1/2" I.P. at the SW 1/16, from which I scribed: 38" D.FIR N87°E 16³/₄ Ft. 14" D.FIR S88°W 28³/₄ Ft.