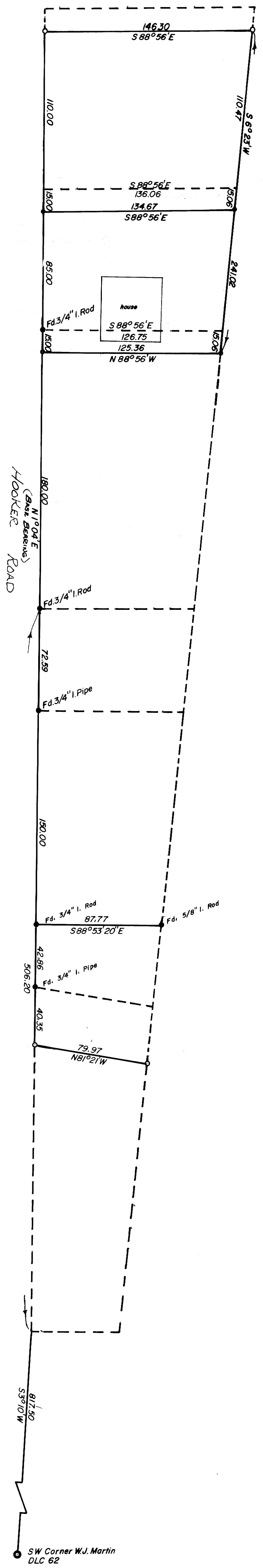


COUNTY SURVEYORS FILE DATA
DO NOT REMOVE FROM OFFICE

SURVEY IN SEC. 1, TWP. 27 SOUTH, RNG. 6 WEST, WIL. MER.
LOT 7, TRACT 1, PLAT 1, ROSEBURG ORCHARDS CO.
Surveyed for Harry Crosthwaite by Don E. Garrett
July, 1975
Scale 1" = 50'
o Set 5/8" Iron Rod

FILED ✓
RECEIVED ✓
JUL 21 1975
COUNTY SURVEYOR
DOUGLAS COUNTY, ORE.
✓



REGISTERED
PROFESSIONAL
LAND SURVEYOR

Don E. Garrett

OREGON
JULY 14, 1961
DON E. GARRETT
544