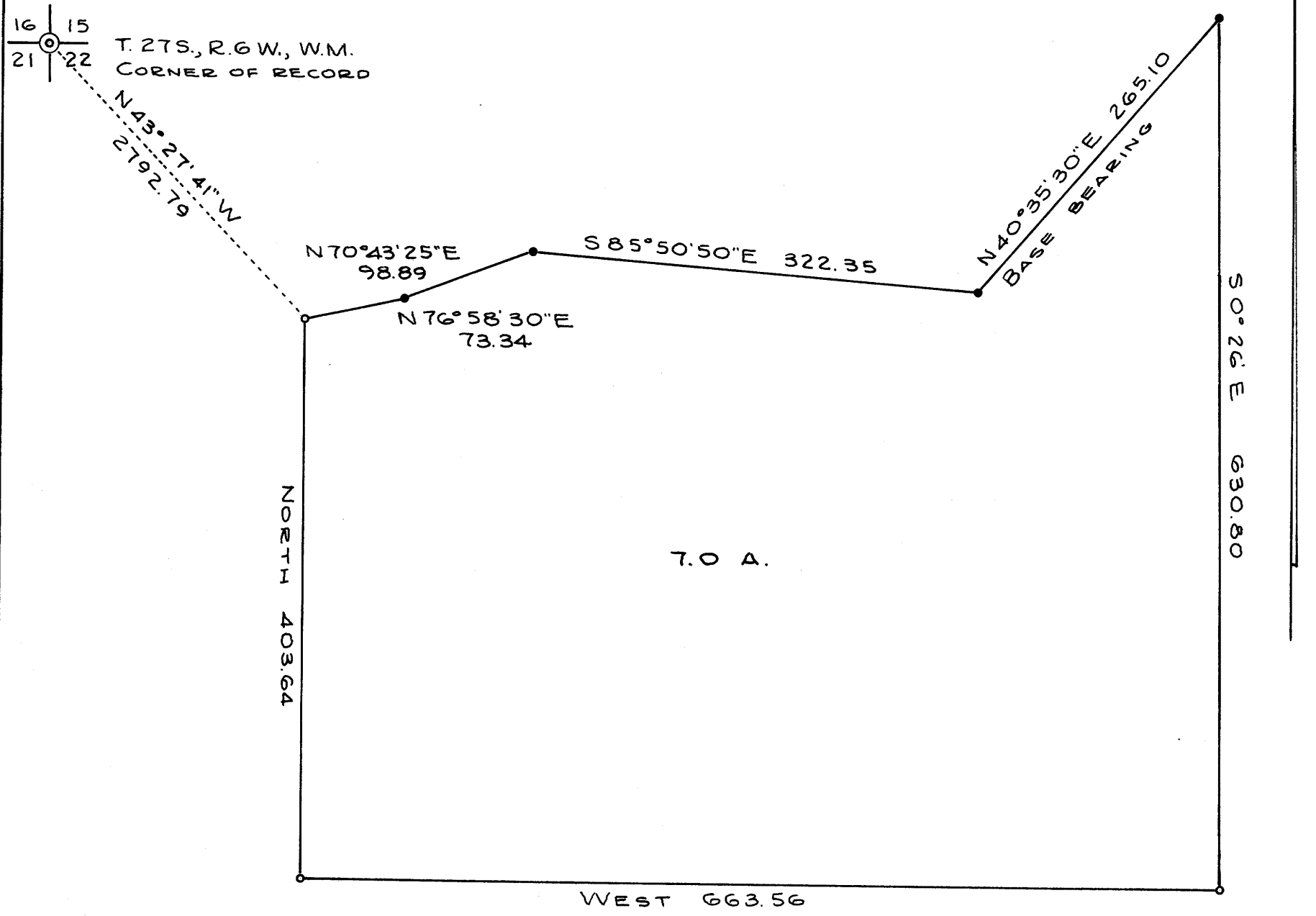


COUNTY SURVEYORS FILE DATE  
DO NOT REMOVE FROM FILE

FILED ✓  
RECEIVED ✓  
MAY 12 1975  
COUNTY SURVEYOR  
JULIUS COUNTY, ORE.  
✓

SURVEY IN SECTION 22, T. 27 S., R. 6 W., W.M.  
SURVEYED FOR HAYWARD REED  
SURVEYED BY R. H. GEE  
MAY, 1975 SCALE 1" = 100'



- DENOTES 3/8" I.R. FND.
- DENOTES 5/8" I.R. SET



MAP FILE M57-5

MAP FILE M57-5