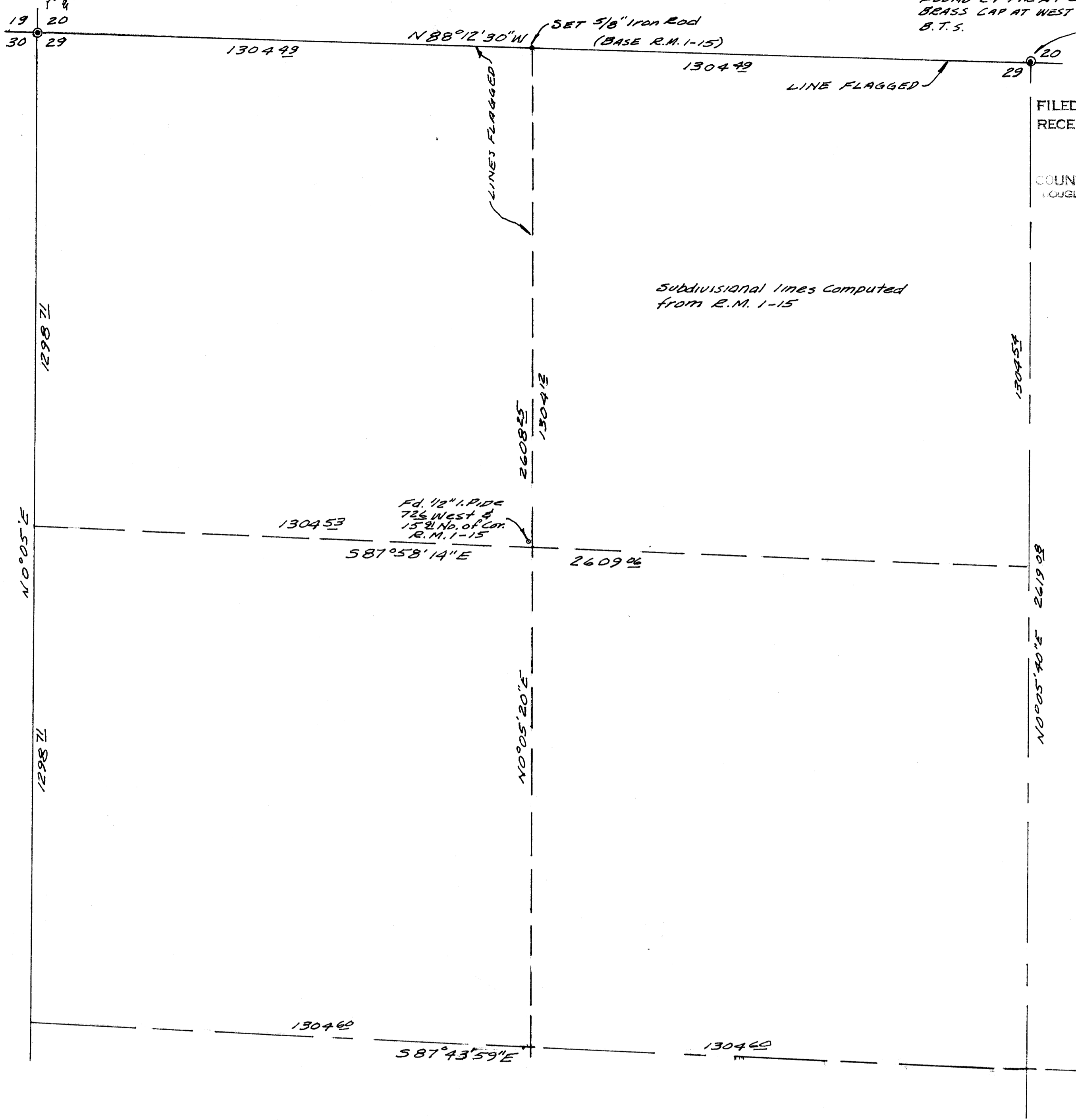


FOUND 2 1/2" FIR. AT COR.  
BRASS CAP AT WEST FACE  
B.T.S.



FILED  
RECEIVED  
JUL 14 1975  
COUNTY SURVEYOR  
DOUGLAS COUNTY, ORE.

Subdivisional lines Computed  
from R.M. 1-15

SURVEY TO ESTABLISH PROPERTY LINES  
IN THE NO. 12 OF THE N.W. 1/4 OF SECTION 29,  
T. 28 S., R. 7 W. N.M.  
FOR JACK RUSSELL  
BY BRUCE ROGERS  
JULY, 1975  
1" = 200'

REGISTERED  
OREGON  
SURVEYOR  
Bruce L. Rogers  
BRUCE L. ROGERS  
1975