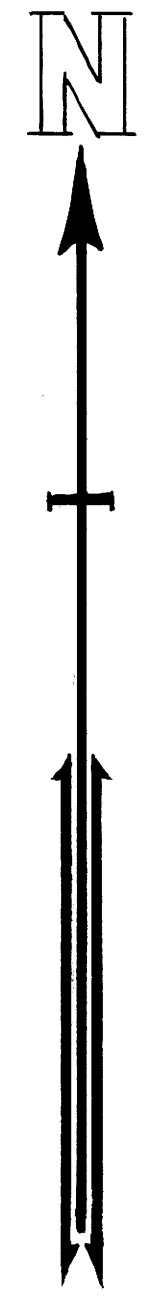
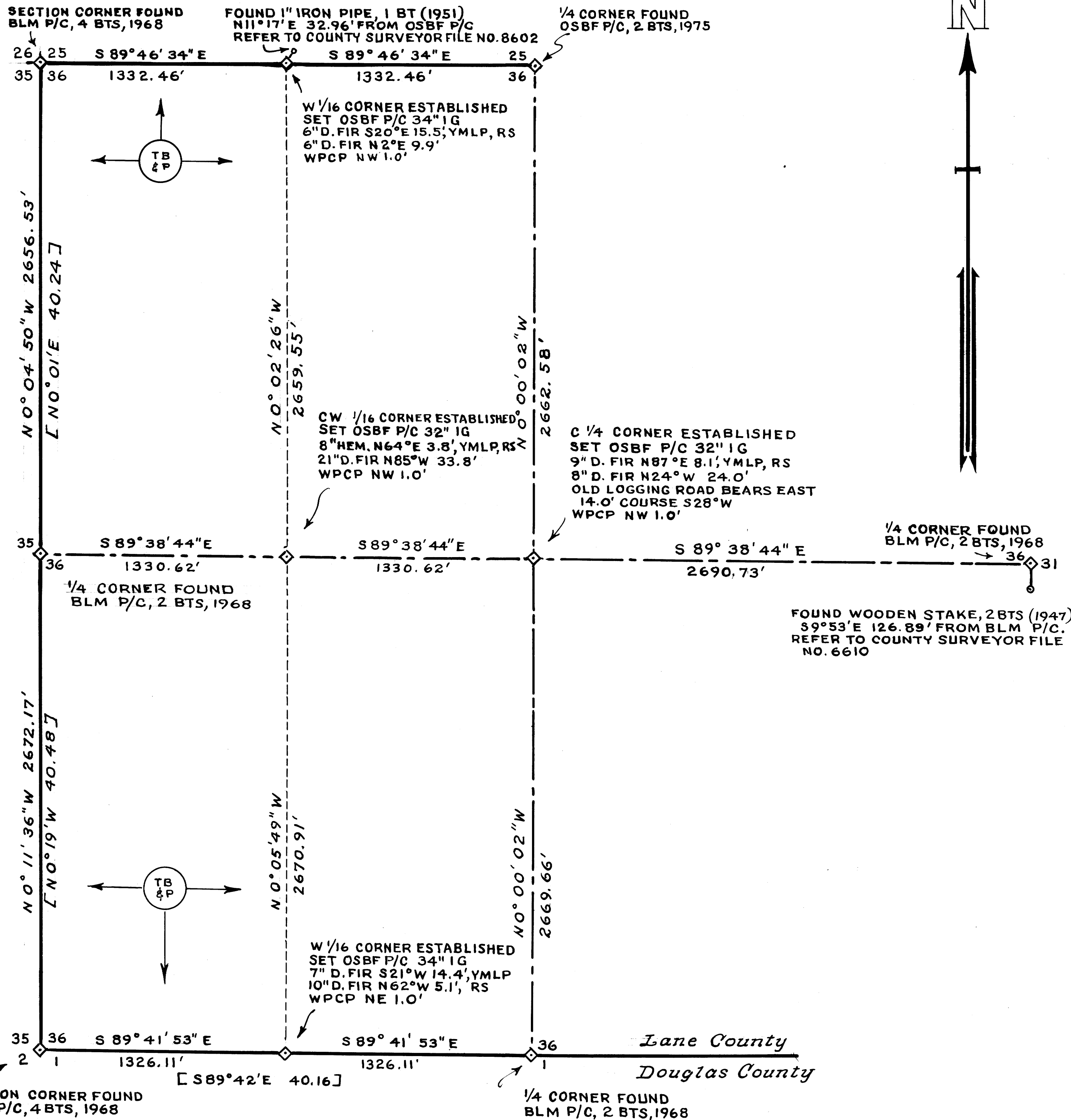


MAP FILE M57-44



LEGEND

- OSBF P/C = OREGON STATE BOARD OF FORESTRY 1 1/2" x 36" GALVANIZED IRON PIPE WITH 3" BRONZE CAP
- BLM P/C = BUREAU OF LAND MANAGEMENT PIPE AND CAP
- WPCP = 4" x 4" x 72" WHITE PAINTED CEDAR POST
- YMLP = YELLOW METAL LOCATION POSTER
- IG = IN GROUND
- [] = RECORD BEARINGS AND DISTANCES
- BT (s) = TRUE BLAZED AND POSTED
- RS = BEARING TREE (OR TREES) = RS 563

FILED *✓*
 RECEIVED *✓*
 JUN 30 1975
 COUNTY SURVEYOR
 DOUGLAS COUNTY, ORE.
✓

SOLAR OBSERVATION

MAGNETIC VARIATION 20° EAST
 DATE MARCH 4, 1975
 STANDARD TIME 2:03:38 PM
 LOCAL TIME 1:50:38 PM
 REF. & PAR. CORRECTION -1.22'
 TRUE ALTITUDE 35° 07' 24"
 LATITUDE 43° 47' 16"
 SUN'S DECLINATION S 6° 24' 31"
 PLACE OF OBSERVATION N0°04'46" W 952.47' FROM 1/4 CORNER SECTIONS 35 AND 36, T. 20 S., R. 5 W., W.M.

SURVEY DATUM

Control based on position of Bureau of Land Management pipes and caps as of April 14, 1975.

For detailed report on found corners see U.S. and county records. All new corners and accessories marked according to "Manual of Instructions for the survey of the public lands of the U. S."

Distances measured to BT face

REGISTERED
 PROFESSIONAL
 LAND SURVEYOR
Wiljo E. Green
 OREGON
 JANUARY 12, 1962
 WILJO E. GREEN
 563

SURVEY FOR:
 STATE OF OREGON - DEPARTMENT OF FORESTRY
SECTIONS 36 & 1, T.20S. & T.21S., R.5 W., W. M.
 LANE COUNTY AND DOUGLAS COUNTY, OREGON

TRANSIT, CHAIN AND ELETRONIC DISTANCE METER SURVEY BY: T. W. RAY, D. J. PARKER AND J. B. McNEIL

DRAWN BY: T. W. RAY
 JUNE, 1975
 SCALE: 1" = 400'

COUNTY SURVEYORS FILE DATA
 DO NOT REMOVE FROM OFFICE