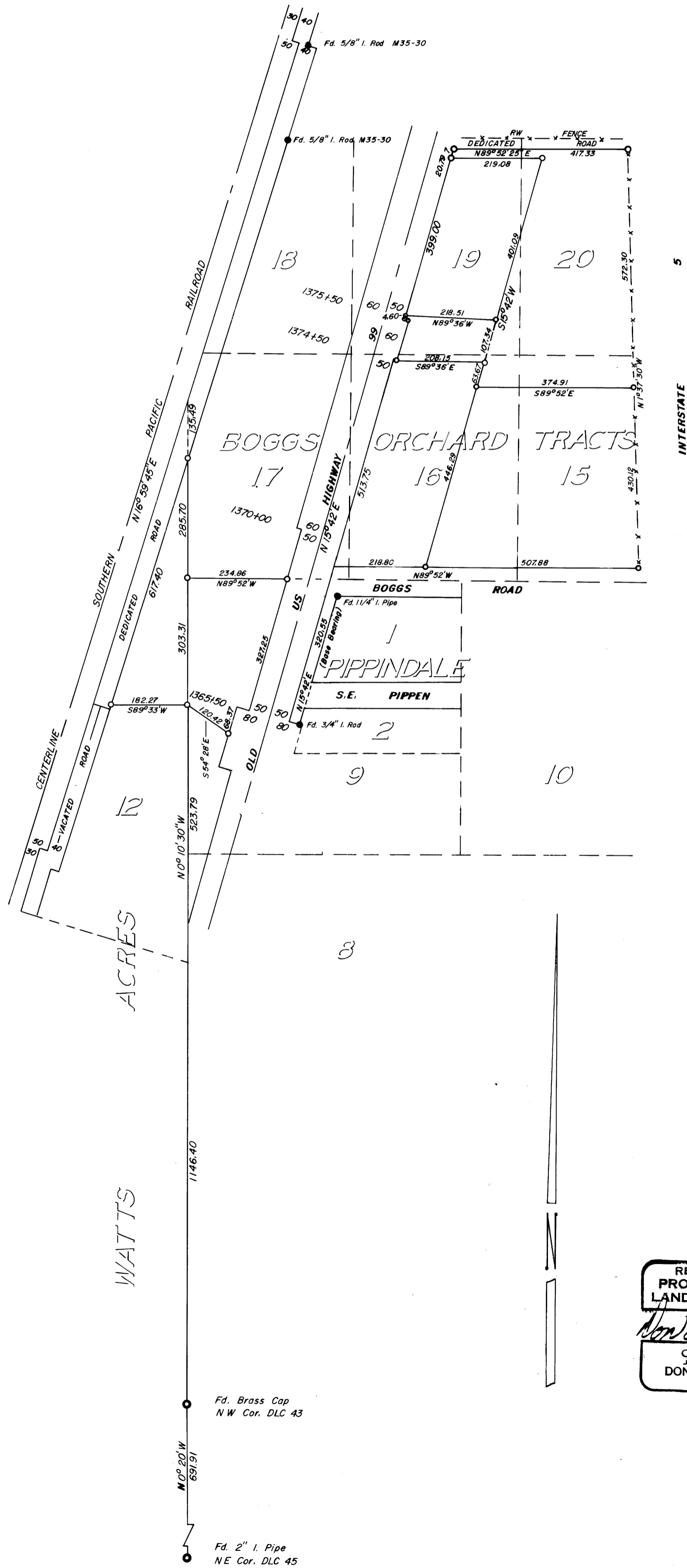


SURVEY IN LOT 12, WATTS ACRES & LOTS 9, 15, 16, 19 & 20, BOGGS ORCHARD TRACTS, SECTIONS  
2, TOWNSHIP 28 SOUTH, RANGE 6 WEST, WILLAMETTE MERIDIAN  
Surveyed for John Doyle & Wesley Smith by Don E. Garrett  
June 1975

0- SET 5/8" I. ROD

Scale 1" = 200'

FILED  
RECEIVED  
JUN 30 1975  
COUNTY SURVEYOR  
DOUGLAS COUNTY, ORE.



REGISTERED  
PROFESSIONAL  
LAND SURVEYOR

*Don E. Garrett*

OREGON  
JULY 14, 1961  
DON E. GARRETT  
544