

COUNTY SURVEYORS FILE DATA  
DO NOT REMOVE FROM OFFICE

FILED ✓  
RECEIVED O.A.

JUN 15 1975

COUNTY SURVEYOR  
DELAWARE COUNTY, ORE.

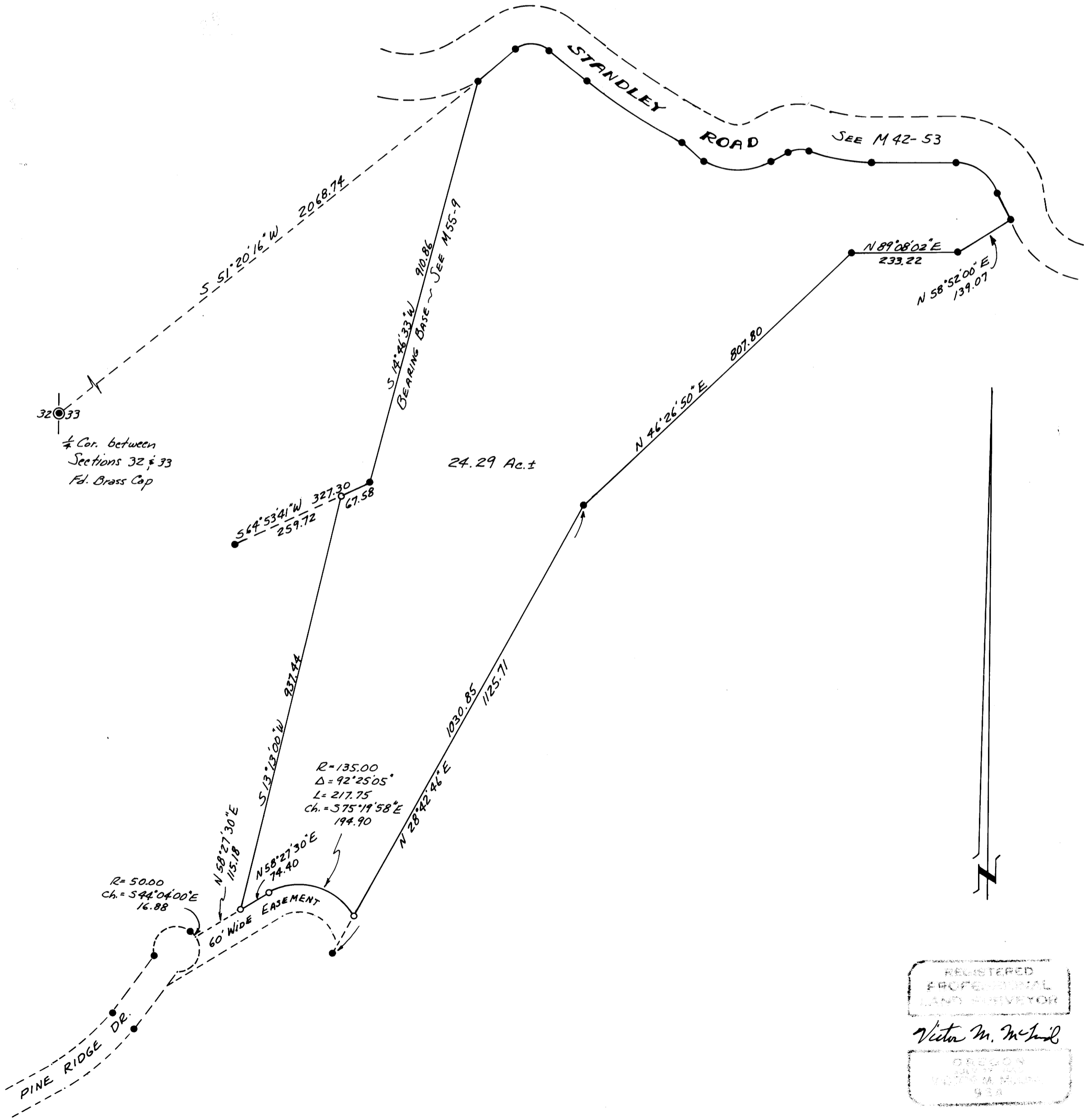
SURVEY FOR DEED DESCRIPTION

Section 33, T26S, R3W, W.M.

Surveyed for Oliver P. & Betty Ann Standley by Victor M. McLind  
June 1975

Scale: 1" = 200'

- ~ Indicates  $\frac{5}{8}$ " Iron Rod
- ~ Indicates Set  $\frac{5}{8}$ " x 30" Iron Rod



REGISTERED  
PROFESSIONAL  
LAND SURVEYOR

Victor M. McLind

OREGON  
LAND SURVEYORS  
BOARD