

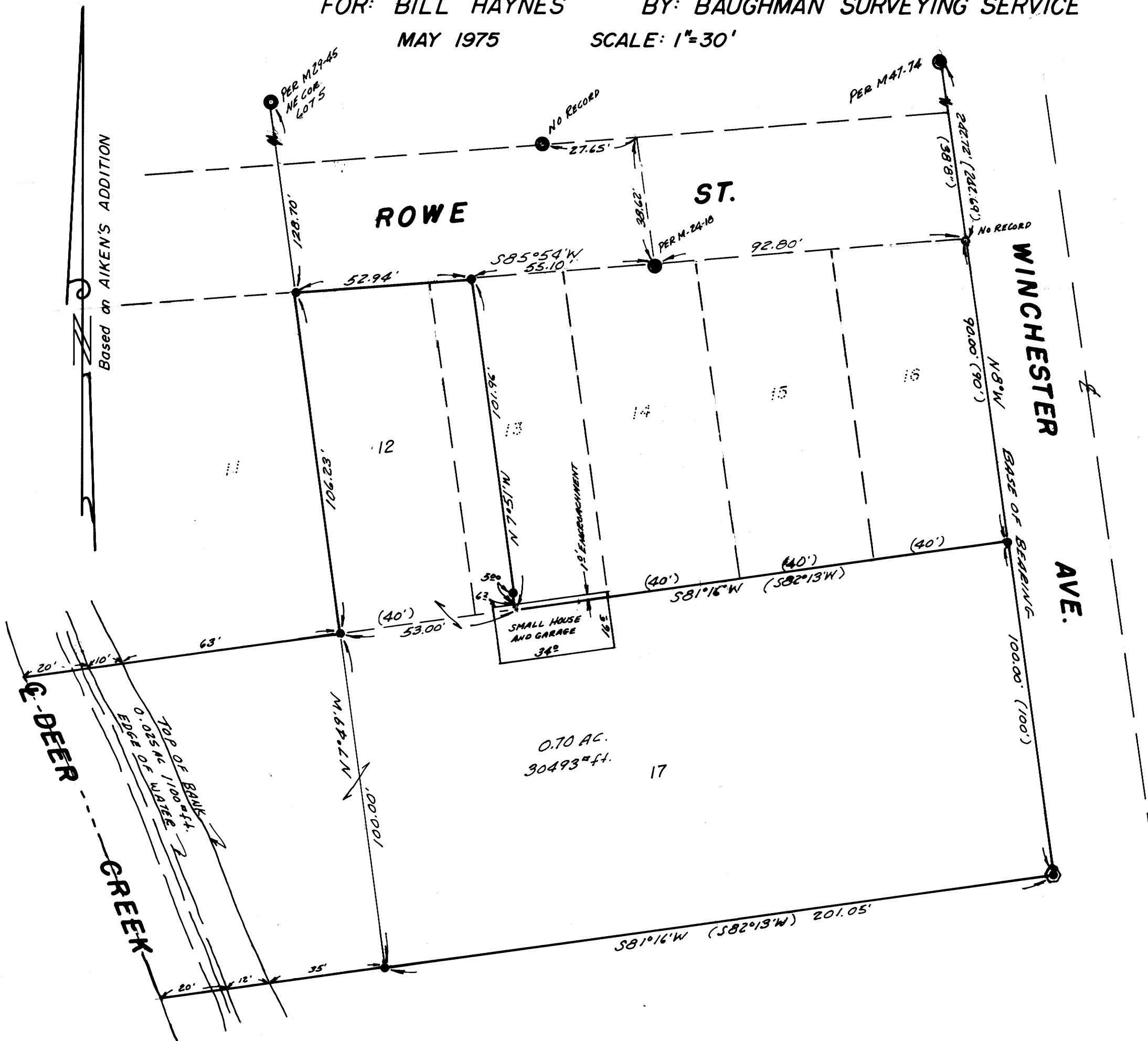
SURVEY TO SET PROPERTY CORNERS
IN LOTS 12, 13 & 17, AIKEN'S ADDITION, SEC. 19, T.27S. R.5W.W.
 FOR: BILL HAYNES BY: BAUGHMAN SURVEYING SERVICE
 MAY 1975 SCALE: 1"=30'

FILED *2*
 RECEIVED *2/4*

JUN 9 1975

COUNTY SURVEYOR
 DOUGLAS COUNTY, ORE.
2

COUNTY SURVEYORS FILE DATA
 DO NOT REMOVE FROM OFFICE



REGISTERED
 PROFESSIONAL
 LAND SURVEYOR

Glenn S. Baughman

OREGON
 JULY 14, 1961
 GLENN S. BAUGHMAN
 536

LEGEND

- ⊗ — Hole in sidewalk w/LEAD PLUG
- — Found P.K. nail
- — Set 1/2" iron rod
- — Found 5/8" iron rod
- — Found 1/2" iron rod
- — Found 3" axle

MAP FILE M57 - 35

MAP FILE M57 - 35