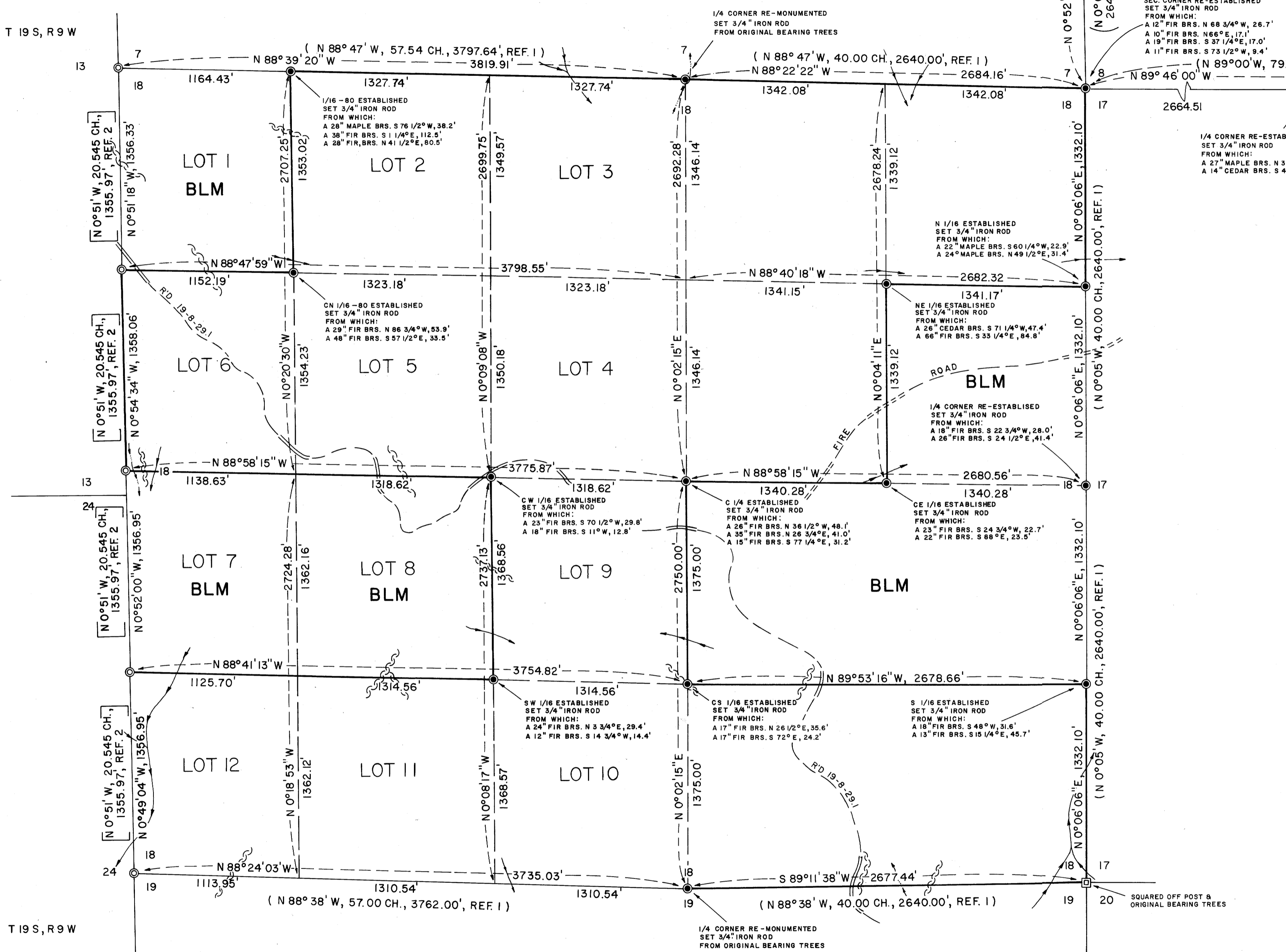
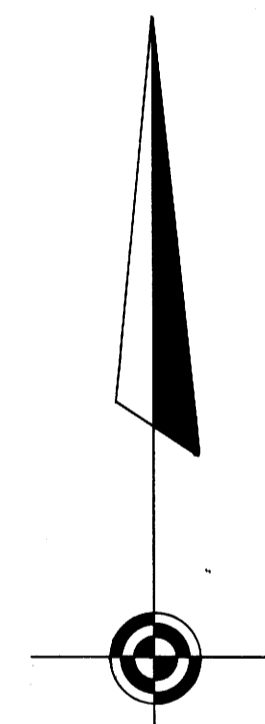


FILED
RECEIVED
JUN 9 1975
COUNTY SURVEYOR
DOUGLAS COUNTY, ORE.



SURVEY BY EUGENE DISTRICT
BUREAU OF LAND MANAGEMENT
IN
SECTION 18, T 19 S, R 8 W, W. M.
DOUGLAS COUNTY, ORE.

TRANSIT AND TAPE SURVEY BY WAYNE TINGLUM, MARK
LICHTENTHALER, LARRY SMITH & MICHAEL BILDERBACK,
SURVEY COMPLETED OCTOBER, 1974



BEARINGS BASED ON SOLAR OBSERVATION
ALL BEARING TREES ESTABLISHED IN ACCORDANCE
WITH "MANUAL OF SURVEYING INSTRUCTIONS 1973"

SCALE - 1" = 500'

LEGEND

- ⊙ = MONUMENT FOUND (BLM BRASS CAP & BT'S or as shown)
- = MONUMENT SET (3/4" X 24" IRON ROD)
- = TRUE LINE BLAZED & POSTED
- = STREAM
- = Ravine
- = RIDGE
- = ALL WEATHER ROAD
- ==== = DIRT ROAD

REFERENCES

- (REF. 1) U.S. GOVERNMENT SURVEY BY CHARLES M. COLLIER - 1891
- (REF. 2) U.S. GOVERNMENT SURVEY BY THOMAS A. TILLMAN - 1963

COUNTY SURVEYORS FILE 157-31
DO NOT REMOVE FROM OFFICE