

Survey in Section 26, T30S, R7W, W.M.

COUNTY SURVEYORS FILE DATA
DO NOT REMOVE FROM OFFICE

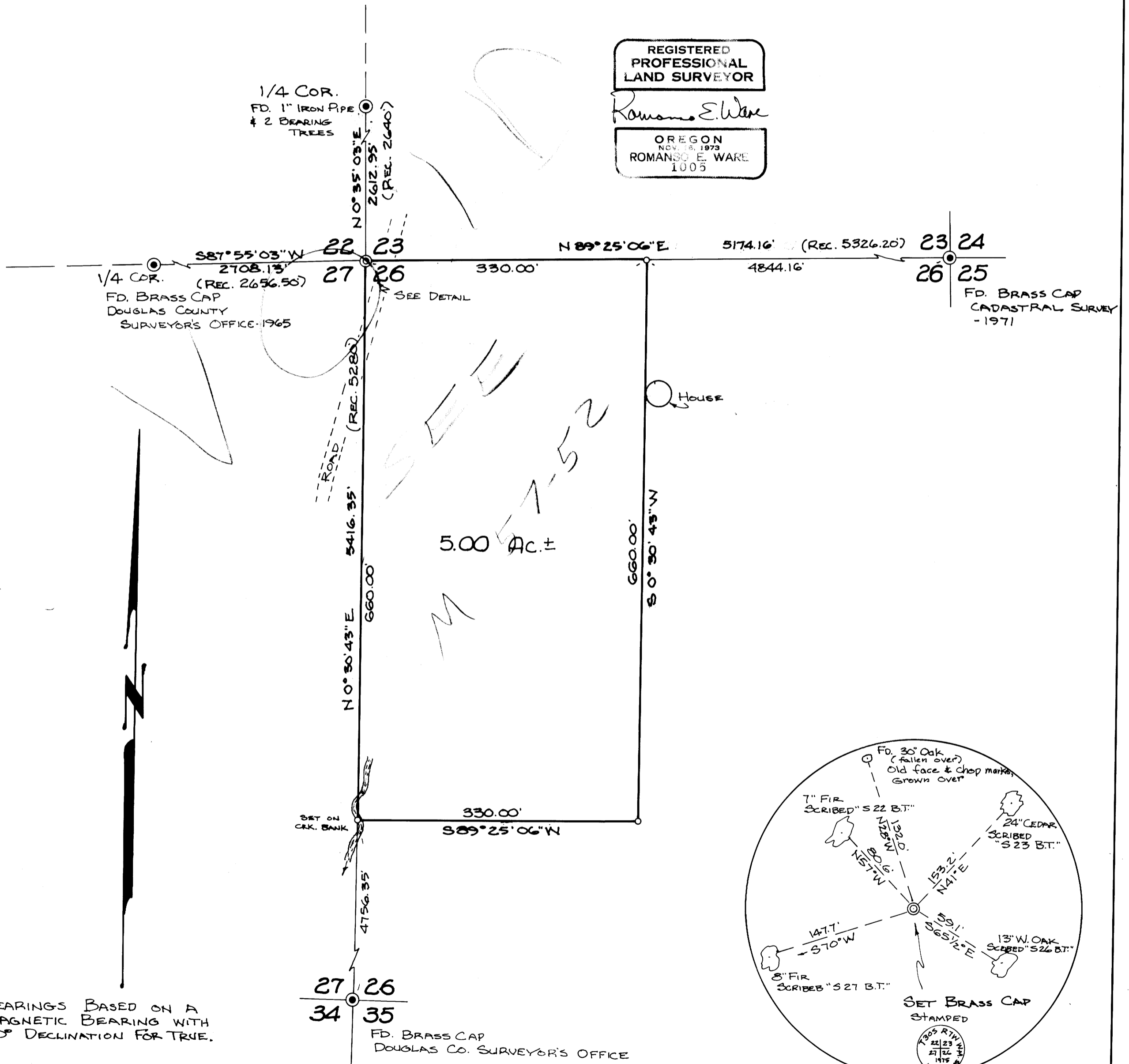
Surveyed for Dean Sanders
Surveyed by B.H.W. Eng. & Surveying, Inc.
April, 1975
Scale 1" = 100'

FILED
RECEIVED
MAY 5 1975

COUNTY SURVEYOR
DOUGLAS COUNTY, ORE.

o — DENOTES SET 3/4" I. PIPE

REGISTERED
PROFESSIONAL
LAND SURVEYOR
Romano E. Ware
OREGON
NOV. 18, 1973
ROMANEO E. WARE
1005



BEARINGS BASED ON A MAGNETIC BEARING WITH 20° DECLINATION FOR TRUE.

